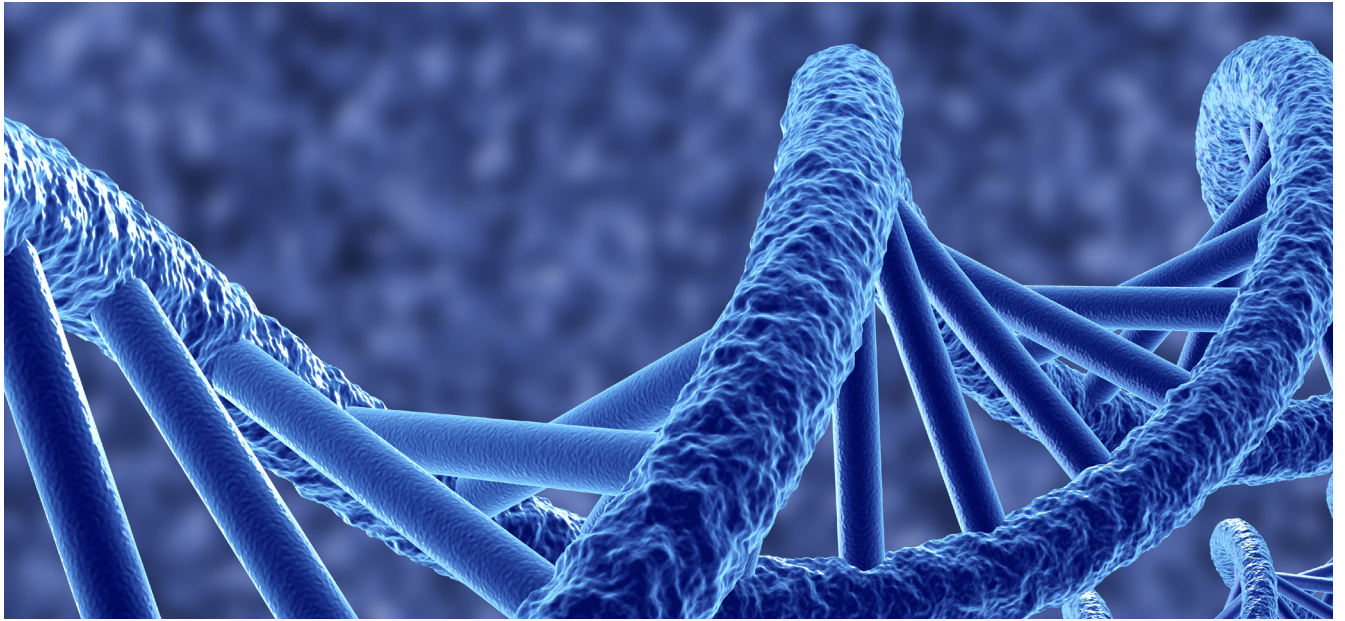


APRIL 2018



# RHENMAN HEALTHCARE EQUITY L/S

## OUTSTANDING LONG-TERM PERFORMANCE IN A COMPLEX MARKET

- Annualised return of 21 % (net) since inception.
- Over 20 years managing successful healthcare funds.
- World renowned industry professionals each with over 30 years experience actively involved through the Scientific Advisory Board.
- Unquestionable alpha generation. outperforming all relevant indices and top quartile in all relevant rankings.
- Long term investment horizon:
  - Diversified across subsectors. company size and geographies to lower volatility.
  - Active trading around holdings.
  - Predominantly cash flow positive companies.
  - Typically investing post approval, mitigating event risk.

### MONTHLY UPDATE

Following several months of negative returns and high volatility on world stock markets, prices stabilized in April. Large exchange rate movements, however, marked by a strong dollar and a weak Swedish krona, led to significant differences in returns during the month. In US dollars, the world index rose close to 1 percent, in euros 2 percent, and in Swedish krona slightly over 5 percent.

April was dominated by corporate earnings reports for the first quarter, with positive earnings performances reported across the board. The pattern from the previous reporting season largely repeated itself, with US companies reporting higher profits and sales growth than in other regions. To a certain extent this was due to the currency tailwind for US companies, but also to the positive impacts of the tax reform.

The political trouble spots that have periodically affected risk

willingness in recent years did not affect markets significantly. Exceptions were the unexpected thawing relations on the Korean peninsula, as well as a sharpened tone from the United States on whether to reimpose sanctions on Iran. The risk of a trade war between the United States and primarily China continued with tariffs being announced on a variety of goods, which received only a lukewarm reaction from the markets.

Within the different sectors, the sharp share price increase for companies in the energy sector was perhaps the most striking development in April. Rising demand, falling inventories and geo-political concerns drove prices up to their highest levels in more than three years. The healthcare sector rose approximately 2.5% in euros.

*Continued on the next page* ➤

Rhenman & Partners Asset Management AB is under the supervision of The Swedish Financial Supervisory Authority (Finansinspektionen) as of February 2009.

[WWW.RHEPA.COM](http://WWW.RHEPA.COM)

 R H E N M A N  
P A R T N E R S  
THE HEALTHCARE FUND

## FUND PERFORMANCE

Measured in its main share class IC1 (EUR), the fund decreased by 0.43 percent.

Fund performance during the month was marked mainly by two events. Walmart, the largest retail chain in the United States, announced in early April its intention to either broaden its cooperation with, or acquire, the US health insurance company Humana. This signals a step in the consolidation of the US service sector which includes insurance companies and companies that procure and distribute pharmaceuticals. The structural transformation of this sub-sector made a positive impact on the underlying companies' returns during the period. The month also saw the publication of clinical trial results from Merck and Bristol-Myers Squibb on lung cancer for each company's immunotherapy products, Keytruda and Opdivo. The trial results cemented Keytruda's position as market leader, resulting in major forecast adjustments for all players in this segment, which in turn led to significant share price movements for the companies concerned.

The month's top contributors were Humana, United Health Group and Novocure. The worst contributors were Nektar Therapeutics, Bristol-Myers Squibb and Incyte.

Humana is one of the leading health insurance companies in the United States. Speculation about a possible takeover of the company led to a strong share price performance during the month. United Health is the largest US health insurance company. The company's interim report for the first quarter exceeded market expectations. This, together with the consolidation taking place in the sub-sector in which the company operates, resulted in a positive share price performance in April. Novocure is a US medical device company that has developed new technology for the treatment of cancer. The company's product Optune, which uses electric fields to disrupt cell division in tumors, is approved for

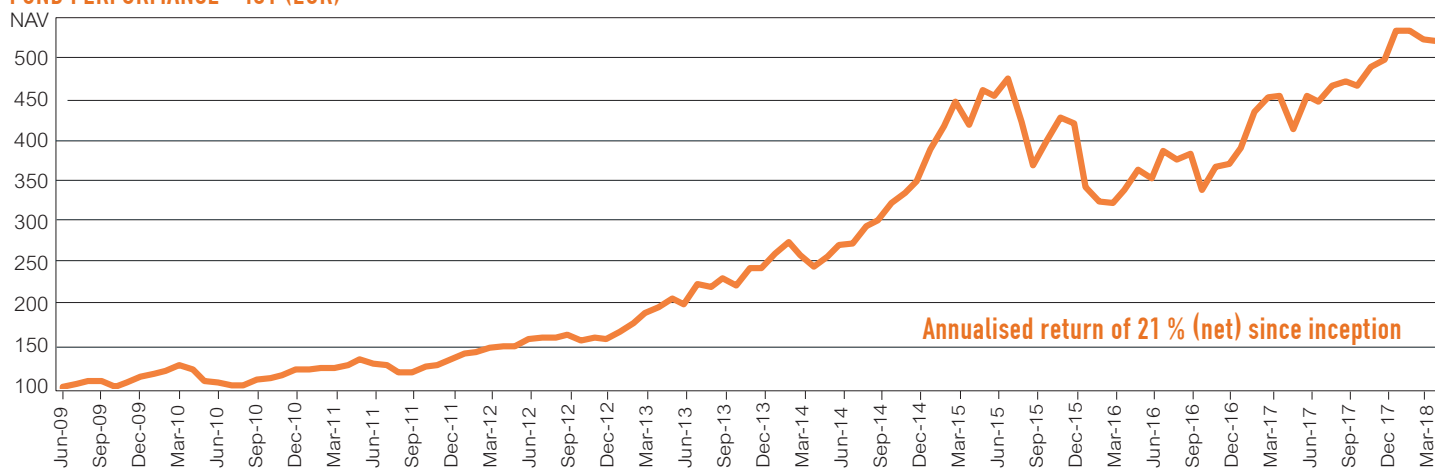
the treatment of glioblastoma (brain cancer). In April, the company announced promising trial results for a different tumor type, mesothelioma. This gives further validation to the technology and thus broadens the product's sales potential, which led to a positive share price reaction.

Nektar Therapeutics, a US research company, is the fund's best contributor year-to-date. In April, however, the share price was negatively affected by two factors. First, a failed trial was presented by a competitor, which acted as a reminder to the market of the high risk inherent in drug development. Second, Merck's success with Keytruda has greatly affected market shares within cancer immunotherapy, thereby creating uncertainty around the potential for Nektar's drug candidate in that area. Even US pharmaceutical company Bristol-Myers Squibb saw its share price fall as a result of Merck's success with Keytruda. The prevailing opinion is that Merck will reinforce its position as the market leader in immuno-oncology. However, many studies are ongoing in this area with expected results over the next 12-18 months. These might trigger a further revaluation of the market outlook for each product. Yet another player in the field of immunotherapy is the US research company Incyte. Incyte experienced a major setback at the beginning of the month following a failed trial of the drug candidate Epacadostat in melanoma. Its shares came under further pressure when the FDA's Advisory Committee expressed concern over the safety of the company's product Baricitinib. As a result of the Committee's recommendation to the FDA, only the lower dose Baricitinib is likely to be approved, reducing the product's sales potential.

## FORECAST

Despite its relatively weak performance in April, the fund has started off the year on a positive note. But it is clear that the stock

## FUND PERFORMANCE - IC1 (EUR)



## APRIL 2018

SHARE CLASS	NAV	MONTHLY RETURN	YTD 2018	SINCE INCEPTION <sup>1</sup>
IC1 (EUR)	523.61	-0.43%	4.50%	423.61%
IC3 (EUR)	604.83	-0.43%	5.12%	504.83%
IC2 (SEK)	395.52	1.77%	11.00%	295.52%
ID1 (SEK)	303.06	1.73%	4.71%	203.06%
IC1 (USD)	140.20	-2.15%	4.67%	40.20%
IC2 (USD)	188.92	-2.11%	4.89%	88.92%
RC1 (EUR)	459.04	-0.48%	4.44%	359.04%
RC1 (SEK)	482.24	1.70%	10.64%	382.24%
RC2 (SEK)	502.12	1.73%	10.89%	402.12%
3 month Euribor (EUR)	103.16	-0.03%	-0.11%	3.16%

Notes: <sup>1</sup> Please find launch date information on page 4 and 6.

market's jury is still out. Our assessment is that there are essentially two factors that are holding back the low valuation multiples of the healthcare sector. First, this is a midterm election year in the United States, meaning that Congress delegates will be elected. The market unrest stems from the fact that it expects the Democrats to gain control of the House of Representatives, and possibly even the Senate. This would alter the balance of power significantly, despite the fact that the Republican president can always veto legislation. The risk of a Democratic Congress lies, above all, in the fact that most laws are the result of extensive haggling, and even the president must exercise some 'give and take' to push through his political agenda. The other major issue holding back a possible expansion of P/E ratios is that long-term interest rates are now beginning to rise from all-time lows, and the financial markets are jittery over anything that can be associated with rising inflationary pressures. We are of the opinion that this vacillation is typical of an election year and should not prevent climbing the wall of worry, even if this were to occur only at the end of the year. We have got to accept this increasing volatility and try to take advantage of the opportunities it creates. ■

## FUND CHARACTERISTICS

### KIID AND PROSPECTUS (WEBPAGE)

<http://fundinfo.sebfundservices.lu/RhenmanPartnersFund/>

### AIFM / MANAGEMENT COMPANY

SEB Fund Services S.A.

### PRIME BROKER

Skandinaviska Enskilda Banken AB (publ)

### INVESTABLE CURRENCIES

Euro (EUR) / Swedish Krona (SEK) / US Dollar (USD)

### DEPOSITARY AND PAYING AGENT

Skandinaviska Enskilda Banken S.A.

### TARGET FUND SIZE

EUR 1bn (hard close)

### RETURN TARGET

Annualised net returns in excess of 12% over time

### AUDITOR

PricewaterhouseCoopers (PwC)

### LEGAL STRUCTURE

AIF / FCP (Fonds Commun de Placement) under Part II of the Luxembourg Law on Investment Funds

### SUBSCRIPTION / REDEMPTION

Monthly

### MINIMUM TOP UP

No minimum

### PORTFOLIO MANAGER

Rhenman & Partners Asset Management AB

### NOTICE PERIOD

3 working days

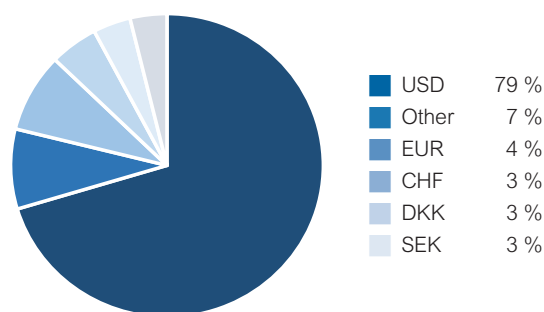
### INVESTMENT TEAM

Henrik Rhenman & Susanna Urdmark

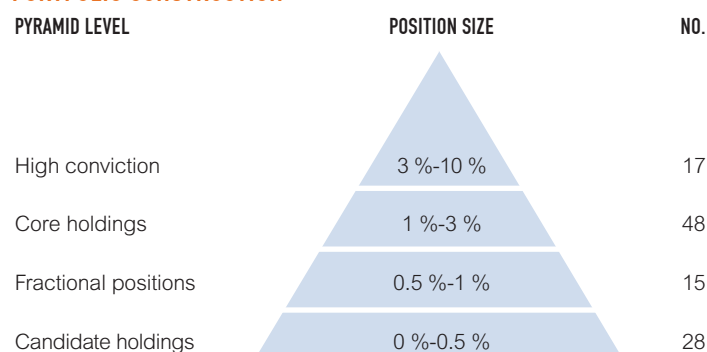
### HURDLE RATE

Euribor 90D (high-water mark)

## CURRENCY EXPOSURE<sup>2</sup>



## PORTFOLIO CONSTRUCTION<sup>3</sup>



## EXPOSURE<sup>4</sup>

Long	159 %
Short	19 %
Gross	177 %
Net	140 %

## RISK (IC1 EUR)

Value at risk <sup>5</sup>	3.00 %
Standard Deviation <sup>6</sup>	19.94 %
Sharpe Ratio <sup>6</sup>	1.02

## AUM<sup>7</sup>

Fund:	EUR 568m
	USD 687m
Firm:	EUR 580m

## LARGEST LONG POSITIONS

1 Humana Inc
2 Incyte Corp Ltd
3 United Health Group Inc
4 Bristol Myers Squibb Co
5 Horizon Pharma Plc

## SHARE CLASS CHARACTERISTICS – INSTITUTIONAL SHARE CLASSES (ONLY INSTITUTIONAL INVESTORS)<sup>8</sup>

	MINIMUM INVESTMENT	MGT. FEE	PERF. FEE	ISIN NUMBER	BLOOMBERG TICKER	LIPPER REUTERS	TELEKURS
IC1 (EUR)	250,000	1.50 %	20 %	LU0417598108	RHLEIC1 LX	65147588	10034579
IC3 (EUR)	5,000,000	1.50 %	10 %	LU0434614789	RHHIC3 LX	68014068	10283697
IC2 (SEK)	50,000,000	1.00 %	20 %	LU0417598793	RHHIC2S LX	68204997	20323930
ID1 (SEK)	100,000	1.50 %	20 %	LU0417599098	RHHIC1D1 LX	68153820	18491109
IC1 (USD)	300,000	1.50 %	20 %	LU0417598280	RHUIC1A LX	68305812	26812813
IC2 (USD)	6,000,000	1.00 %	20 %	LU0417598520	RHUIC2U LX	68265724	24456000

## SHARE CLASS CHARACTERISTICS – RETAIL SHARE CLASSES (ALSO OPEN TO INSTITUTIONAL INVESTORS)<sup>8</sup>

RC1 (EUR)	2,500	2.00 %	20 %	LU0417597555	RHLERC1 LX	65147589	10034567
RC1 (SEK)	500	2.00 %	20 %	LU0417597712	RHLSRC1 LX	68014067	10239523
RC2 (SEK)	2,500,000	1.50 %	20 %	LU0417598017	RHLSRC2 LX	68015239	10239528

Notes: <sup>2</sup> As a percentage of the market value of the long and short positions (excluding cash positions). <sup>3</sup> Number of long equity positions (excluding any ETFs). <sup>4</sup> The exposure is adjusted for net fund flow at month end. <sup>5</sup> For holdings at month end (95 % conf. int. 250 days history). <sup>6</sup> Standard deviation and Sharpe ratio are annualized. <sup>7</sup> The AUM is adjusted for net fund flow at month end.

<sup>8</sup> Administrative fees are charged in addition to the fees above. Further information is available in the KIID as well as the prospectus (part B. A14-18).

## HISTORICAL RETURNS AND NAVS

IC1 (EUR) NAV												
YEAR	JAN	FEB	MAR	APR	MAY	JUN	JUL	AUG	SEP	OCT	NOV	DEC
2009						100.75	105.19	107.47	107.83	100.99	105.70	113.28
2010	117.91	119.94	127.53	122.31	108.73	106.40	102.84	102.63	109.95	112.16	116.17	122.73
2011	121.53	124.28	123.35	127.79	134.24	129.26	128.19	119.36	118.28	125.67	127.48	134.59
2012	142.42	143.99	149.51	150.29	150.07	159.07	160.74	160.74	165.47	156.93	161.34	158.92
2013	168.92	178.11	191.91	198.41	209.10	202.53	225.87	223.66	233.45	225.66	246.67	246.79
2014	263.91	277.13	262.34	247.80	260.99	274.87	276.25	296.82	304.03	326.16	338.66	352.48
2015	391.34	419.34	448.65	421.01	463.44	456.29	476.60	424.39	370.76	401.72	430.21	423.32
2016	345.01	326.39	325.66	342.05	366.15	355.48	389.06	378.89	385.50	340.52	369.37	372.46
2017	391.88	436.08	454.95	456.28	415.30	455.96	449.05	468.44	473.40	468.37	491.88	501.07
2018	535.61	535.64	525.88	523.61								

IC1 (EUR) PERFORMANCE % NET OF FEES													
YEAR	JAN	FEB	MAR	APR	MAY	JUN	JUL	AUG	SEP	OCT	NOV	DEC	TOTAL
2009						0.75	4.41	2.17	0.33	-6.34	4.66	7.17	13.28
2010	4.09	1.72	6.33	-4.09	-11.10	-2.14	-3.35	-0.20	7.13	2.01	3.58	5.65	8.34
2011	-0.98	2.26	-0.75	3.60	5.05	-3.71	-0.83	-6.89	-0.90	6.25	1.44	5.58	9.66
2012	5.82	1.10	3.83	0.52	-0.15	6.00	1.05	0.00	2.94	-5.16	2.81	-1.50	18.08
2013	6.29	5.44	7.75	3.39	5.39	-3.14	11.52	-0.98	4.38	-3.34	9.31	0.05	55.29
2014	6.94	5.01	-5.34	-5.54	5.32	5.32	0.50	7.45	2.43	7.28	3.83	4.08	42.83
2015	11.02	7.15	6.99	-6.16	10.08	-1.54	4.45	-10.95	-12.64	8.35	7.09	-1.60	20.10
2016	-18.50	-5.40	-0.22	5.03	7.05	-2.91	9.45	-2.61	1.74	-11.67	8.47	0.84	-12.01
2017	5.21	11.28	4.33	0.29	-8.98	9.79	-1.52	4.32	1.06	-1.06	5.02	1.87	34.53
2018	6.89	0.01	-1.82	-0.43									4.50

IC2 (SEK) NAV												
YEAR	JAN	FEB	MAR	APR	MAY	JUN	JUL	AUG	SEP	OCT	NOV	DEC
2013	105.95	109.53	117.11	123.34	131.02	128.83	142.56	142.09	147.55	144.39	159.03	158.77
2014	169.27	178.14	170.53	162.83	172.56	182.30	184.56	197.44	201.10	218.77	227.47	240.91
2015	264.32	283.76	300.86	285.57	313.96	305.90	326.08	292.97	252.07	273.89	288.10	281.94
2016	232.96	221.76	219.09	228.93	248.02	243.80	270.79	263.91	270.85	245.87	263.97	260.88
2017	270.49	305.07	315.32	318.79	292.29	318.16	310.91	322.70	331.45	331.49	352.83	356.33
2018	379.63	389.78	388.65	395.52								

IC2 (SEK) PERFORMANCE % NET OF FEES													
YEAR	JAN	FEB	MAR	APR	MAY	JUN	JUL	AUG	SEP	OCT	NOV	DEC	TOTAL
2013	5.95	3.38	6.92	5.32	6.23	-1.67	10.66	-0.33	3.84	-2.14	10.14	-0.16	58.77
2014	6.61	5.24	-4.27	-4.52	5.98	5.64	1.24	6.98	1.85	8.79	3.98	5.91	51.74
2015	9.72	7.35	6.03	-5.08	9.94	-2.57	6.60	-10.15	-13.96	8.66	5.19	-2.14	17.03
2016	-17.37	-4.81	-1.20	4.49	8.34	-1.70	11.07	-2.54	2.63	-9.22	7.36	-1.17	-7.47
2017	3.68	12.78	3.36	1.10	-7.69	8.11	-2.28	3.79	2.71	0.01	6.44	0.99	36.59
2018	6.54	2.67	-0.29	1.77									11.00

IC1 (USD) NAV												
YEAR	JAN	FEB	MAR	APR	MAY	JUN	JUL	AUG	SEP	OCT	NOV	DEC
2015		106.43	109.37	107.12	114.84	114.48	118.78	107.70	93.74	100.50	102.88	104.09
2016	84.51	80.27	84.02	88.68	92.24	89.25	98.50	95.48	98.04	84.48	88.63	88.85
2017	95.78	104.78	110.08	112.50	105.65	116.97	118.72	124.26	125.01	121.84	130.74	133.94
2018	147.42	145.05	143.28	140.20								

IC1 (USD) PERFORMANCE % NET OF FEES													
YEAR	JAN	FEB	MAR	APR	MAY	JUN	JUL	AUG	SEP	OCT	NOV	DEC	TOTAL
2015		6.43	2.76	-2.06	7.21	-0.31	3.76	-9.33	-12.96	7.21	2.37	1.18	4.09
2016	-18.81	-5.02	4.67	5.55	4.01	-3.24	10.36	-3.07	2.68	-13.83	4.91	0.25	-14.64
2017	7.80	9.40	5.06	2.20	-6.09	10.71	1.50	4.67	0.60	-2.54	7.30	2.45	50.75
2018	10.06	-1.61	-1.22	-2.15									4.67

IC2 (USD) NAV												
YEAR	JAN	FEB	MAR	APR	MAY	JUN	JUL	AUG	SEP	OCT	NOV	DEC
2014					102.92	108.60	106.82	113.71	112.69	120.10	124.21	126.40
2015	132.75	141.32	145.96	143.02	153.38	152.95	158.76	143.26	124.74	133.79	137.03	138.70
2016	112.66	107.07	112.12	118.40	123.21	119.27	131.69	127.71	131.20	113.12	118.73	119.08
2017	128.42	140.54	147.72	151.02	141.89	156.98	159.38	166.89	167.94	163.77	175.76	180.12
2018	198.33	195.19	192.99	188.92								

IC2 (USD) PERFORMANCE %. NET OF FEES													
YEAR	JAN	FEB	MAR	APR	MAY	JUN	JUL	AUG	SEP	OCT	NOV	DEC	TOTAL
2014					2.92	5.52	-1.64	6.45	-0.90	6.58	3.42	1.76	26.40
2015	5.02	6.46	3.28	-2.01	7.24	-0.28	3.80	-9.76	-12.93	7.26	2.42	1.22	9.73
2016	-18.77	-4.96	4.72	5.60	4.06	-3.20	10.41	-3.02	2.73	-13.78	4.96	0.29	-14.15
2017	7.84	9.44	5.11	2.23	-6.05	10.63	1.53	4.71	0.63	-2.48	7.32	2.48	51.26
2018	10.11	-1.58	-1.13	-2.11									4.89

IC3 (EUR) NAV													
YEAR	JAN	FEB	MAR	APR	MAY	JUN	JUL	AUG	SEP	OCT	NOV	DEC	
2009								102.15	103.33	96.78	101.30	109.19	
2010	114.20	116.43	124.73	119.62	106.33	104.06	100.57	100.37	107.52	109.68	113.59	120.00	
2011	118.82	121.50	120.59	124.92	131.89	126.43	125.36	116.73	115.66	122.76	124.53	132.03	
2012	140.67	142.42	148.58	149.43	149.16	159.24	161.09	161.06	166.38	157.79	162.21	159.79	
2013	170.25	180.70	196.39	203.85	216.23	208.50	235.66	233.03	244.50	236.34	260.09	260.40	
2014	280.76	296.58	279.47	263.97	278.02	294.48	296.09	321.00	329.83	356.89	372.31	389.50	
2015	437.99	471.80	508.68	477.10	527.32	518.14	544.00	481.68	420.82	455.95	488.29	480.47	
2016	391.59	370.46	369.62	388.23	415.58	403.47	441.58	430.05	437.55	386.50	419.24	422.75	
2017	444.79	494.96	516.44	518.14	471.42	517.72	509.84	533.67	539.99	534.17	563.68	575.38	
2018	620.04	620.31	607.45	604.83									

IC3 (EUR) PERFORMANCE %. NET OF FEES													
YEAR	JAN	FEB	MAR	APR	MAY	JUN	JUL	AUG	SEP	OCT	NOV	DEC	TOTAL
2009								2.15	1.16	-6.34	4.67	7.79	9.19
2010	4.59	1.95	7.13	-4.10	-11.11	-2.13	-3.35	-0.20	7.12	2.01	3.56	5.64	9.90
2011	-0.98	2.26	-0.75	3.59	5.58	-4.14	-0.85	-6.88	-0.92	6.14	1.44	6.02	10.03
2012	6.54	1.24	4.33	0.57	-0.18	6.76	1.16	-0.02	3.30	-5.16	2.80	-1.49	21.03
2013	6.55	6.14	8.68	3.80	6.07	-3.57	13.03	-1.12	4.92	-3.34	10.05	0.12	62.96
2014	7.82	5.63	-5.77	-5.55	5.32	5.92	0.55	8.41	2.75	8.20	4.32	4.62	49.58
2015	12.45	7.72	7.82	-6.21	10.53	-1.74	4.99	-11.46	-12.63	8.35	7.09	-1.60	23.36
2016	-18.50	-5.40	-0.23	5.03	7.04	-2.91	9.45	-2.61	1.74	-11.67	8.47	0.84	-12.01
2017	5.21	11.28	4.34	0.33	-9.02	9.82	-1.52	4.67	1.18	-1.08	5.52	2.08	36.10
2018	7.76	0.04	-2.07	-0.43									5.12

ID1 (SEK) NAV													
YEAR	JAN	FEB	MAR	APR	MAY	JUN	JUL	AUG	SEP	OCT	NOV	DEC	
2012					100.64	104.51	101.00	100.77	105.42	101.93	105.47	103.07	
2013	109.66	109.21	116.69	122.83	130.33	127.88	141.46	140.87	146.24	143.04	157.52	157.19	
2014	167.54	168.39	161.54	154.18	163.36	172.51	174.59	186.71	190.10	206.73	214.90	227.49	
2015	249.52	256.41	271.30	257.41	282.93	275.68	293.76	263.61	226.72	246.24	258.91	253.27	
2016	209.19	186.39	184.08	192.27	208.21	204.58	227.14	221.28	227.01	205.99	221.08	218.41	
2017	226.36	247.58	257.17	259.92	239.81	259.22	253.21	262.73	269.78	269.72	287.00	289.42	
2018	308.23	298.96	297.90	303.06									

ID1 (SEK) PERFORMANCE %. NET OF FEES													
YEAR	JAN	FEB	MAR	APR	MAY	JUN	JUL	AUG	SEP	OCT	NOV	DEC	TOTAL
2012					0.64	3.85	-3.36	-0.23	4.61	-3.31	3.47	-2.28	3.07
2013	6.39	-0.41	6.85	5.26	6.11	-1.88	10.62	-0.42	3.81	-2.19	10.12	-0.21	52.51
2014	6.58	0.51	-4.07	-4.56	5.95	5.60	1.21	6.94	1.82	8.75	3.95	5.86	44.72
2015	9.68	2.76	5.81	-5.12	9.91	-2.56	6.56	-10.26	-13.99	8.61	5.15	-2.18	11.33
2016	-17.40	-10.90	-1.24	4.45	8.29	-1.74	11.03	-2.58	2.59	-9.26	7.33	-1.21	-13.76
2017	3.64	9.37	3.87	1.07	-7.74	8.09	-2.32	3.76	2.68	-0.02	6.41	0.84	32.51
2018	6.50	-3.01	-0.35	1.73									4.71

RC1 (EUR) NAV													
YEAR	JAN	FEB	MAR	APR	MAY	JUN	JUL	AUG	SEP	OCT	NOV	DEC	
2010									104.35	104.75	110.36	115.32	
2011	114.18	116.50	115.79	119.40	125.10	120.47	119.15	110.91	109.86	116.68	118.31	124.92	
2012	132.14	133.59	138.66	139.34	139.09	147.39	148.89	148.83	153.16	145.20	149.21	146.92	
2013	156.14	164.59	177.28	183.22	192.89	185.65	206.96	204.86	212.69	205.49	224.58	224.79	
2014	240.30	251.66	236.42	223.21	235.00	247.45	248.60	266.95	273.34	293.13	304.24	315.14	
2015	349.47	373.47	398.19	373.48	411.03	404.45	422.31	375.75	328.13	355.37	380.41	374.15	
2016	304.81	288.23	287.45	301.80	322.91	313.37	342.82	333.71	339.38	299.66	324.90	327.48	
2017	344.40	383.08	399.53	400.83	364.36	400.14	393.87	411.29	415.46	410.84	431.35	439.53	
2018	469.64	469.79	461.25	459.04									

RC1 (EUR) PERFORMANCE % NET OF FEES													
YEAR	JAN	FEB	MAR	APR	MAY	JUN	JUL	AUG	SEP	OCT	NOV	DEC	TOTAL
2010									4.35	0.38	5.36	4.49	15.32
2011	-0.99	2.03	-0.61	3.12	4.77	-3.70	-1.10	-6.92	-0.95	6.21	1.40	5.59	8.32
2012	5.78	1.10	3.80	0.49	-0.18	5.97	1.02	-0.04	2.91	-5.20	2.76	-1.53	17.61
2013	6.28	5.41	7.71	3.35	5.28	-3.75	11.48	-1.01	3.82	-3.39	9.29	0.09	53.00
2014	6.90	4.73	-6.06	-5.59	5.28	5.30	0.46	7.38	2.39	7.24	3.80	3.58	40.19
2015	10.89	6.87	6.62	-6.21	10.05	-1.60	4.42	-11.03	-12.67	8.30	7.05	-1.65	18.73
2016	-18.53	-5.44	-0.27	4.99	6.99	-2.95	9.40	-2.66	1.70	-11.70	8.42	0.79	-12.47
2017	5.17	11.23	4.29	0.33	-9.10	9.82	-1.57	4.42	1.01	-1.11	4.99	1.90	34.22
2018	6.85	0.03	-1.82	-0.48									4.44

RC1 (SEK) NAV													
YEAR	JAN	FEB	MAR	APR	MAY	JUN	JUL	AUG	SEP	OCT	NOV	DEC	TOTAL
2009						99.74	99.92	101.00	101.51	96.72	101.85	106.75	
2010	110.70	108.05	115.09	109.18	96.69	93.87	89.69	88.93	93.37	96.59	98.29	102.16	
2011	98.91	100.22	101.80	105.28	111.04	109.04	107.03	100.09	100.29	104.24	106.42	111.05	
2012	118.78	118.87	123.79	125.05	125.79	130.61	126.17	125.85	131.65	127.25	131.60	128.55	
2013	136.76	141.24	150.89	158.78	168.47	165.25	182.72	181.89	188.61	184.41	203.02	202.38	
2014	215.63	226.61	216.26	206.33	218.55	230.73	233.43	249.55	253.98	276.09	286.74	302.97	
2015	332.20	356.11	376.45	357.02	392.32	381.98	406.89	365.09	313.86	340.74	358.11	350.16	
2016	289.10	274.97	271.43	283.40	306.76	301.29	334.38	325.60	333.90	302.85	324.90	320.85	
2017	332.37	374.59	388.12	392.14	361.60	390.79	381.55	395.80	406.28	406.01	431.88	435.88	
2018	464.01	476.10	474.20	482.24									

RC1 (SEK) PERFORMANCE % NET OF FEES													
YEAR	JAN	FEB	MAR	APR	MAY	JUN	JUL	AUG	SEP	OCT	NOV	DEC	TOTAL
2009						-0.26	0.18	1.08	0.50	-4.72	5.30	4.81	6.75
2010	3.70	-2.39	6.52	-5.14	-11.44	-2.92	-4.45	-0.85	4.99	3.45	1.76	3.94	-4.30
2011	-3.18	1.32	1.58	3.42	5.47	-1.80	-1.84	-6.48	0.20	3.94	2.09	4.35	8.70
2012	6.96	0.08	4.14	1.02	0.59	3.83	-3.40	-0.25	4.61	-3.34	3.42	-2.32	15.76
2013	6.39	3.28	6.83	5.23	6.10	-1.91	10.57	-0.45	3.69	-2.23	10.09	-0.32	57.43
2014	6.55	5.09	-4.57	-4.59	5.92	5.57	1.17	6.91	1.78	8.71	3.86	5.66	49.70
2015	9.65	7.20	5.71	-5.16	9.89	-2.64	6.52	-10.27	-14.03	8.56	5.10	-2.22	15.58
2016	-17.44	-4.89	-1.29	4.41	8.24	-1.78	10.98	-2.63	2.55	-9.30	7.28	-1.25	-8.37
2017	3.59	12.70	3.61	1.04	-7.79	8.07	-2.36	3.73	2.65	-0.07	6.37	0.93	35.85
2018	6.45	2.61	-0.40	1.70									10.64

RC2 (SEK) NAV													
YEAR	JAN	FEB	MAR	APR	MAY	JUN	JUL	AUG	SEP	OCT	NOV	DEC	TOTAL
2009						99.74	99.98	101.12	101.68	96.94	102.10	107.07	
2010	111.07	108.57	115.69	109.78	97.28	94.47	90.31	89.58	94.10	97.38	99.14	103.08	
2011	99.84	101.20	102.84	106.40	112.28	110.30	108.32	101.33	101.58	105.64	107.89	112.63	
2012	120.30	120.44	125.51	126.83	127.66	132.58	128.13	127.86	133.77	129.36	133.84	130.80	
2013	139.17	143.74	153.48	161.57	171.53	167.92	185.74	185.04	192.06	187.86	206.87	206.39	
2014	219.98	231.28	221.05	210.98	223.54	236.05	238.90	255.47	260.24	283.00	293.97	310.92	
2015	341.02	365.80	386.77	366.96	403.34	392.85	418.61	375.87	323.26	351.09	369.14	361.10	
2016	298.25	283.80	280.26	292.73	317.00	311.48	345.83	336.89	345.62	313.62	336.59	332.52	
2017	344.62	388.54	402.06	406.34	374.90	405.23	395.81	410.70	421.71	421.61	448.59	452.80	
2018	482.21	495.26	493.58	502.12									

RC2 (SEK) PERFORMANCE % NET OF FEES													
YEAR	JAN	FEB	MAR	APR	MAY	JUN	JUL	AUG	SEP	OCT	NOV	DEC	TOTAL
2009						-0.26	0.24	1.14	0.55	-4.66	5.32	4.87	7.07
2010	3.74	-2.25	6.56	-5.11	-11.39	-2.89	-4.40	-0.81	5.05	3.49	1.81	3.97	-3.73
2011	-3.14	1.36	1.62	3.46	5.53	-1.76	-1.80	-6.45	0.25	4.00	2.13	4.39	9.26
2012	6.81	0.12	4.21	1.05	0.65	3.85	-3.36	-0.21	4.62	-3.30	3.46	-2.27	16.13
2013	6.40	3.28	6.78	5.27	6.16	-2.10	10.61	-0.38	3.79	-2.19	10.12	-0.23	57.79
2014	6.58	5.14	-4.42	-4.56	5.95	5.60	1.21	6.94	1.87	8.75	3.88	5.77	50.65
2015	9.68	7.27	5.73	-5.12	9.91	-2.60	6.56	-10.21	-14.00	8.61	5.14	-2.18	16.14
2016	-17.41	-4.84	-1.25	4.45	8.29	-1.74	11.03	-2.59	2.59	-9.26	7.32	-1.21	-7.91
2017	3.64	12.74	3.48	1.06	-7.74	8.09	-2.32	3.76	2.68	-0.02	6.40	0.94	36.17
2018	6.50	2.71	-0.34	1.73									10.89

## ABOUT RHENMAN & PARTNERS

Rhenman & Partners Asset Management, founded in 2008, is a Stockholm-based investment manager focusing on two niche funds administered by SEB Fund Services S.A.: Rhenman Healthcare Equity L/S, founded in 2009, and Rhenman Global Opportunities L/S, founded in 2016. Assets under management amount to approximately EUR 500m. Investment Teams of both Funds are in their investment processes supported by renowned Advisory Boards, including professors and experts with many years of market experience and extensive networks around the world.

## LEGAL DISCLAIMER

Rhenman Healthcare Equity L/S. "The Fund" is not an investment fund as defined in the European Union directives relating to undertakings for collective investment in transferable securities (UCITS). Legal information regarding Fund is contained in the Prospectus and the KIID, available at Rhenman & Partners Asset Management AB (Rhenman & Partners) webpage: <http://rhepa.com/the-fund/prospectus/>.

This material has been prepared by Rhenman & Partners for professional and non-professional investors. Rhenman & Partners when preparing this information has not taken into account any one customer's particular investment objectives, financial resources or other relevant circumstances and the opinions and recommendations herein are not intended to represent recommendations of particular investments to particular customers. This material is for informational purposes only and should not be construed as an offer or solicitation to sell or buy units of the Fund. Investors is strongly recommended to get professional advice as to whether investment in the Fund is appropriate having regard to their particular investment needs, objectives and financial circumstances, before investing.

All securities' transactions involve risks, which include (among others) the risk of adverse or unanticipated market, financial or political developments and, in international transactions, currency risk. There can be no assurance that an investment in the Fund will achieve profits or avoid incurring substantial losses. There is a high degree of risk inherent in investments and they may not be suitable for all eligible investors. It is possible that an investor may lose some or all of its investment. The past is not necessarily a guide to the future performance of an investment. The value of investments may fall as well as rise and investors may not get back the amount invested. Changes in rates of foreign exchange may cause the value of investments to go up or down.

Before making an investment decision, an investor and/or its adviser should (i) consider the suitability of investments in the Fund with respect to its investment objectives and personal situation and (ii) consider factors such as its personal net worth, income, age, risk tolerance and liquidity needs. Short-term investors and investors who cannot bear the loss of some or all of their investment or the risks associated with the limited liquidity of an investment should not invest.

Due care and attention has been used in the preparation of this information. However, actual results may vary from their forecasts, and any variation may be materially positive or negative. Forecasts, by their very nature, are subject to uncertainty and contingencies, many of which are outside the control of Rhenman & Partners. Rhenman & Partners cannot guarantee that the information contained herein is without fault or entirely accurate. There may be delays, omissions or inaccuracies in the information. Any dated information is published as of its date only and no obligation or responsibility is undertaken to update or amend any such information.

The information in this material is based on sources that Rhenman & Partners believes to be reliable. Rhenman & Partners can however not guarantee that all information is correct. Furthermore, information and opinions may change without notice. Rhenman & Partners is under no obligation to make amendments or changes to this publication if errors are found or opinions or information change. Rhenman & Partners accepts no responsibility for the accuracy of its sources.

Rhenman & Partners is the owner of all works of authorship including, but not limited to, all design text, images and trademarks in this material unless otherwise explicitly stated. The use of Rhenman & Partners' material, works or trademarks is forbidden without written consent except where otherwise expressly stated. Furthermore, it is prohibited to publish material made or gathered by Rhenman & Partners without written consent.

By accessing and using the <http://rhepa.com/> website and any pages thereof, you acknowledge that you have reviewed the following important legal information and understand and agree to the terms and conditions set therein. If you do not agree to the terms and conditions in this disclaimer, do not access or use <http://rhepa.com/website> in any way.

Products and services described herein are not available to all persons in all geographical locations. Rhenman & Partner will not provide any such products or services to any person if the provision of such services could be in violation of law or regulation in such person's home country jurisdiction or any other related jurisdiction. The units of the Fund may not be offered or sold to or within the United States or in any other country where such offer or sale would conflict with applicable laws or regulations.

In no event, including (but not limited to) negligence, will Rhenman & Partner be liable to you or anyone else for any consequential, incidental, special or indirect damages (including but not limited to lost profits, trading losses and damages).

The sole legally binding basis for the purchase of shares of the Fund described in this information is the latest valid sales prospectus with its terms of contract. Subscriptions cannot be received on the basis of financial reports.

An investment in the Fund does not represent deposits or other liabilities of any member of the Rhenman & Partners Group. Neither Rhenman & Partners nor any member of the Rhenman & Partners Group and its affiliates guarantees in any way the performance of the Fund, repayment of capital from the Fund, any particular return from or any increase in the value of the Fund.

# SUBSCRIBE TO OUR MONTHLY NEWSLETTER AT [WWW.RHEPA.COM](http://WWW.RHEPA.COM)

### CONTACT DETAILS

Rhenman & Partners  
Asset Management AB  
Strandvägen 5A  
114 51 Stockholm, Sweden  
Tel + 46 8 459 88 80  
[info@rhepa.com](mailto:info@rhepa.com)

*International investors (non Swedish):*  
Carl Grevelius  
Head of Investor Relations  
Tel + 46 8 459 88 83  
[carl@rhepa.com](mailto:carl@rhepa.com)

*Swedish investors:*  
Anders Grelsson  
Swedish Investor Relations  
Mob + 46 70 374 43 20  
[anders@rhepa.com](mailto:anders@rhepa.com)

[WWW.RHEPA.COM](http://WWW.RHEPA.COM)