



RHENMAN HEALTHCARE EQUITY L/S

June 2018

IC1 (EUR)

−0.31%

RC1 (SEK)

+0.70%

- Annualised return of 21 % (net) since inception.
- Over 20 years managing successful healthcare funds.
- World renowned industry professionals each with over 30 years experience actively involved through the Scientific Advisory Board.

Monthly update

June was yet another month marked by political events. Expectations that President Trump's various moves on trade tariffs would be resolved through negotiation were confounded. Instead, the tone was sharpened and the United States announced additional tariffs that were even more far reaching than previous ones. This had a major impact on the countries and sectors that could be affected. Investors reacted in particular to the threat of tariffs on cars and auto components as well as substantial additional tariffs on China.

Concerns over developments in Europe also continued. Most events were interpreted negatively, from the political situation in Italy and Angela Merkel's possibly weakened position in Germany to the continued sluggish Brexit process. But something that did not attract attention was Emmanuel Macron's apparent ability to enforce his plans to reform the French railways following months of strikes, despite the fact that this success could play a major role in the reform efforts of one of the EU's largest economies.

In view of these developments, global stock market performance was surprisingly calm and world indices closed with only marginal changes. However, the differences were larger between sectors and regions. Among the worst performers were industrial companies (as a sector) and China (as a country), while defensive sectors such as consumer staples and healthcare companies made gains.

FUND PERFORMANCE

Measured in its main share class IC1 (EUR), the fund decreased by 0.3 percent in June. The Nasdaq Biotechnology Index (NBI) continued to climb at the beginning of the month and, on the heels of a 5.7 percent upswing since May 31, reached an all-time-high on June 20, measured in euros. This was subsequently followed by a correction that more or less wiped out the month's gains. However, there was some recovery at the end of the period and the NBI closed up 1.3 percent for the month. We saw a similar pattern for a broader healthcare index (MSCI HC) which rose by 3.4 percent, up until June 20, but then closed the period up 1.9 percent. Trade war concerns also apply to the healthcare industry, albeit that it is not directly affected.

The best contributors to the fund in June were Vertex Pharmaceuticals, Allergan and FibroGen. The worst contributors this month were Nektar Therapeutics, Intra-Cellular Therapies and Sangamo Therapeutics.

Revenues from US biotech company Vertex Pharmaceuticals primarily come from the sale of products within cystic fibrosis therapy where the company holds a leading market position. Several competitors conduct research in the field and one of the companies considered a possible threat to market leader Vertex is the Belgian company Galapagos. Vertex's share price therefore reacted

Continued on the next page →

very positively when, at the end of the period, Galapagos announced mediocre results from one of its clinical studies on a combination therapy in cystic fibrosis. In addition to these weak results, Galapagos' partner AbbVie announced that it was evaluating their partnership, which is likely to be interpreted as a possible termination. If this happened, Vertex would further strengthen its market position in cystic fibrosis.

From the beginning of the year through the end of May, the share price of US specialty pharma company Allergan fell by nearly 8 percent in local currency. During the month of June, however, the stock recovered thanks to the positive development of the company's research portfolio. Firstly, Allergan announced positive phase 2 data for atogepant, a pill for the treatment of episodic migraine. Secondly, Allergan also presented phase 3 clinical data for bimatoprost SR (sustained release). Bimatoprost SR is a long-acting prostaglandin analog for the treatment of glaucoma, a condition that affects the optic nerve and field of vision. Glaucoma that is ignored can lead to blindness. Today glaucoma is treated with eye drops, but the effectiveness of the treatment is reduced if the patient fails to adhere to the treatment. This is why a long-acting medicine, such as Allergan's bimatoprost SR which is administered every four months, is considered to possess significant market potential.

US biotechnology company FibroGen is developing pamrevlumab, an antibody that inhibits the activity of connective tissue growth, for the treatment of idiopathic pulmonary fibrosis (IPF) as well as pancreatic cancer. At the beginning of the period, the company presented promising phase 2 data from its pancreatic cancer study. In addition to its success with pamrevlumab, the company is advancing roxadustat for the oral treatment of anemia in patients with chronic kidney disease. In this development, phase 3 data are expected in the latter part of the current year.

At ASCO, the major cancer conference held in early June, US biotech company Nektar presented updated data from its phase 2 studies which the company is conducting in a number of different tumor types. It is difficult to draw any conclusions at this stage because the number of patients was limited, as was the follow-up period during which treatment was undertaken. The data presented therefore left many questions unanswered, causing much nervousness in the stock market. As a result, Nektar's share price fell by roughly 40 percent in local currency during the period.

US research company Intra-Cellular has developed a new

drug for the treatment of schizophrenia. At the beginning of the period, the company announced that it had applied for approval for lumateperone with the US Food and Drug Administration (FDA). Aside from lumateperone, the company's research portfolio is limited. This means that the stock market sees few catalysts for the stock in the near future. The stock was therefore weak during the month of June.

Sangamo is a US biotechnology company that develops new drugs with a focus on gene-based therapies. The company has several ongoing development projects in blood diseases such as hemophilia, beta-thalassemia and sickle cell disease. A competitor, Global Blood Therapeutics, presented highly promising results for its drug candidate in sickle cell disease at the end of the month, leading to weak performance for Sangamo's share price.

FORECAST

Profit-taking during the second half of June was attributable to concern over a trade war and affected most of the stock market, including subsectors that were not directly hit by tariffs. So far this year, healthcare has performed better than most other sectors, reflecting a certain degree of protection from the trade war issue. Second-quarter reports for the sector will most likely be compelling, considering that large companies have performed worse than small and medium businesses yet are expected to report strong earnings thanks to healthy market conditions and the continued effects of US tax reform.

It should be noted that even non-US companies will be helped by the tax reform if they have significant operations in the United States. We therefore believe in a fairly good reporting period that will most likely be received positively, all things being equal. However, the month of August will probably see some ambivalence with only a few months left until the US midterm elections.

A new, positive development in June was that the Trump administration did not seem to be thinking of proposing or initiating any reforms that the pharmaceutical industry as a whole could not live with or that would significantly change the game rules for drug pricing. We therefore have a positive view on market conditions for the healthcare sector for the coming period. However, we would like to point out that the market will be emotion-driven, and that both international trade issues and the Republicans' ability to retain their majority in the Senate can be crucial determinants of sector performance.

Fund characteristics

KIID AND PROSPECTUS (WEBPAGE)

<http://fundinfo.sebfundservices.lu/RhenmanPartnersFund/>

INVESTABLE CURRENCIES

Euro (EUR) / Swedish Krona (SEK) / US Dollar (USD)

TARGET FUND SIZE

EUR 1bn (hard close)

RETURN TARGET

Annualised net returns in excess of 12% over time

LEGAL STRUCTURE

AIF / FCP (Fonds Commun de Placement) under Part II of the Luxembourg Law on Investment Funds

PORTFOLIO MANAGER

Rhenman & Partners Asset Management AB

INVESTMENT TEAM

Henrik Rhenman & Susanna Urdmark

AIFM / MANAGEMENT COMPANY

SEB Fund Services S.A.

PRIME BROKER

Skandinaviska Enskilda Banken AB (publ)

DEPOSITARY AND PAYING AGENT

Skandinaviska Enskilda Banken S.A.

AUDITOR

PricewaterhouseCoopers (PwC)

SUBSCRIPTION/REDEMPTION

Monthly

MINIMUM TOP UP

No minimum

NOTICE PERIOD

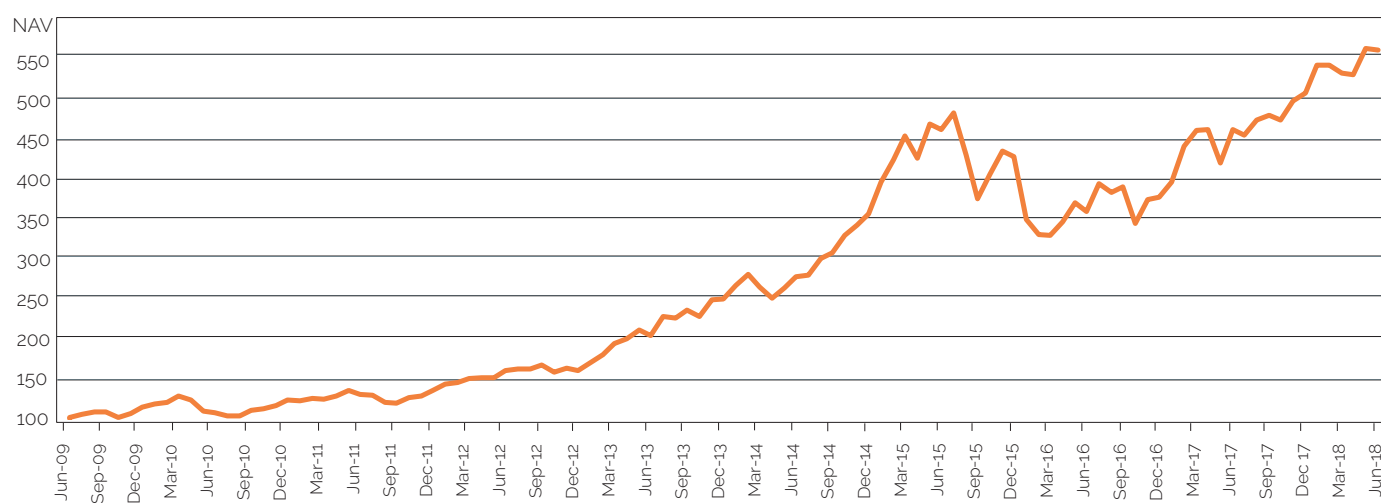
3 working days

HURDLE RATE

Euribor 90D (high-water mark)

+21%
annualised return since inception

FUND PERFORMANCE - IC1 (EUR)

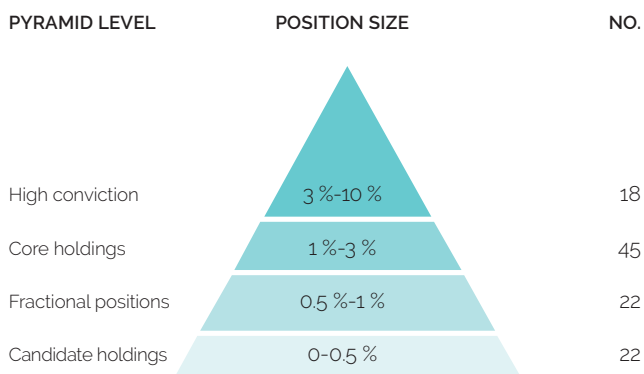


JUNE 2018

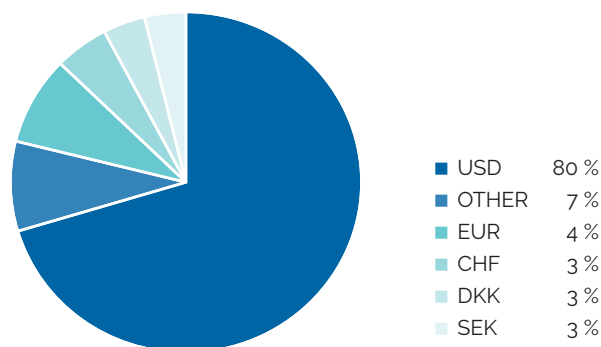
SHARE CLASS	NAV ¹	MONTHLY RETURN ¹	YTD 2018 ¹	SINCE INCEPTION ¹
IC1 (EUR)	554.68	-0.31%	10.70%	454.68%
IC3 (EUR)	644.96	-0.35%	12.09%	544.96%
IC2 (SEK)	415.07	0.77%	16.48%	315.07%
ID1 (SEK)	317.84	0.74%	9.82%	217.84%
IC1 (USD)	144.95	-0.30%	8.22%	44.95%
IC2 (USD)	195.44	-0.26%	8.51%	95.44%
RC1 (EUR)	485.62	-0.42%	10.49%	385.62%
RC1 (SEK)	505.35	0.70%	15.94%	405.35%
RC2 (SEK)	526.43	0.71%	16.26%	426.43%
3 mån Euribor (EUR)	103.16	0.00%	-0.11%	3.16%

Note: 1) Please find launch date information on page 5-8.

PORTFOLIO CONSTRUCTION ²



CURRENCY EXPOSURE ³



RISK (IC1 EUR)

Value at risk ⁵	2.53 %
Standard Deviation ⁶	19.82 %
Sharpe Ratio ⁶	1.04

EXPOSURE ⁴

Long	159 %
Short	18 %
Gross	176 %
Net	141 %

AUM ⁷

Fund:	
EUR 636m	
USD 740m	
Total: EUR 646m	

LARGEST LONG POSITIONS

1 Nektar Therapeutics
2 Horizon Pharma Plc
3 Roche Holding Ltd Pref
4 Vertex Pharmaceuticals Inc
5 Incyte Corp Ltd

SHARE CLASS CHARACTERISTICS – INSTITUTIONAL SHARE CLASSES – ONLY INSTITUTIONAL INVESTORS ⁸

MINIMUM INVESTMENT		MGT. FEE	PERF. FEE	ISIN NO.	BLOOMBERG TICKER	LIPPER REUTERS	TELEKURS
IC1 (EUR)	250 000	1.50 %	20 %	LU0417598108	RHLEIC1 LX	65147588	10034579
IC3 (EUR)	5 000 000	1.50 %	10 %	LU0434614789	RHHIC3 LX	68014068	10283697
IC2 (SEK)	50 000 000	1.00 %	20 %	LU0417598793	RHHIC2S LX	68204997	20323930
ID1 (SEK)	100 000	1.50 %	20 %	LU0417599098	RHHIC1D1 LX	68153820	18491109
IC1 (USD)	300 000	1.50 %	20 %	LU0417598280	RHUIC1A LX	68305812	26812813
IC2 (USD)	6 000 000	1.00 %	20 %	LU0417598520	RHUIC2U LX	68265724	24456000

SHARE CLASS CHARACTERISTICS – RETAIL SHARE CLASSES – ALSO OPEN TO INSTITUTIONAL INVESTORS ⁸

MINIMUM INVESTMENT		MGT. FEE	PERF. FEE	ISIN NO.	BLOOMBERG TICKER	LIPPER REUTERS	TELEKURS
RC1 (EUR)	2 500	2.00 %	20 %	LU0417597555	RHLERC1 LX	65147589	10034567
RC1 (SEK)	500	2.00 %	20 %	LU0417597712	RHLSRC1 LX	68014067	10239523
RC2 (SEK)	2 500 000	1.50 %	20 %	LU0417598017	RHLSRC2 LX	68015239	10239528

Notes: 2) As a percentage of the market value of the long and short positions (excluding cash positions). 3) Number of long equity positions (excluding any ETFs). 4) The exposure is adjusted for net fund flow at month end. 5) For holdings at month end (95 % conf. int. 250 days history). 6) Standard deviation and Sharpe ratio are annualized. 7) The AUM is adjusted for net fund flow at month end. 8) Administrative fees are charged in addition to the fees above. Further information is available in the KIID as well as the prospectus (part B. A14-18).

HISTORICAL RETURNS AND NAVS

IC1 (EUR) NAV													
YEAR	JAN	FEB	MAR	APR	MAY	JUN	JUL	AUG	SEP	OCT	NOV	DEC	
2009						100.75	105.19	107.47	107.83	100.99	105.70	113.28	
2010	117.91	119.94	127.53	122.31	108.73	106.40	102.84	102.63	109.95	112.16	116.17	122.73	
2011	121.53	124.28	123.35	127.79	134.24	129.26	128.19	119.36	118.28	125.67	127.48	134.59	
2012	142.42	143.99	149.51	150.29	150.07	159.07	160.74	160.74	165.47	156.93	161.34	158.92	
2013	168.92	178.11	191.91	198.41	209.10	202.53	225.87	223.66	233.45	225.66	246.67	246.79	
2014	263.91	277.13	262.34	247.80	260.99	274.87	276.25	296.82	304.03	326.16	338.66	352.48	
2015	391.34	419.34	448.65	421.01	463.44	456.29	476.60	424.39	370.76	401.72	430.21	423.32	
2016	345.01	326.39	325.66	342.05	366.15	355.48	389.06	378.89	385.50	340.52	369.37	372.46	
2017	391.88	436.08	454.95	456.28	415.30	455.96	449.05	468.44	473.40	468.37	491.88	501.07	
2018	535.61	535.64	525.88	523.61	556.39	554.68							

IC1 (EUR) PERFORMANCE %. NET OF FEES													
YEAR	JAN	FEB	MAR	APR	MAY	JUN	JUL	AUG	SEP	OCT	NOV	DEC	TOTAL
2009						0.75	4.41	2.17	0.33	-6.34	4.66	7.17	13.28
2010	4.09	1.72	6.33	-4.09	-11.10	-2.14	-3.35	-0.20	7.13	2.01	3.58	5.65	8.34
2011	-0.98	2.26	-0.75	3.60	5.05	-3.71	-0.83	-6.89	-0.90	6.25	1.44	5.58	9.66
2012	5.82	1.10	3.83	0.52	-0.15	6.00	1.05	0.00	2.94	-5.16	2.81	-1.50	18.08
2013	6.29	5.44	7.75	3.39	5.39	-3.14	11.52	-0.98	4.38	-3.34	9.31	0.05	55.29
2014	6.94	5.01	-5.34	-5.54	5.32	5.32	0.50	7.45	2.43	7.28	3.83	4.08	42.83
2015	11.02	7.15	6.99	-6.16	10.08	-1.54	4.45	-10.95	-12.64	8.35	7.09	-1.60	20.10
2016	-18.50	-5.40	-0.22	5.03	7.05	-2.91	9.45	-2.61	1.74	-11.67	8.47	0.84	-12.01
2017	5.21	11.28	4.33	0.29	-8.98	9.79	-1.52	4.32	1.06	-1.06	5.02	1.87	34.53
2018	6.89	0.01	-1.82	-0.43	6.26	-0.31							10.70

IC2 (SEK) NAV													
YEAR	JAN	FEB	MAR	APR	MAY	JUN	JUL	AUG	SEP	OCT	NOV	DEC	
2013	105.95	109.53	117.11	123.34	131.02	128.83	142.56	142.09	147.55	144.39	159.03	158.77	
2014	169.27	178.14	170.53	162.83	172.56	182.30	184.56	197.44	201.10	218.77	227.47	240.91	
2015	264.32	283.76	300.86	285.57	313.96	305.90	326.08	292.97	252.07	273.89	288.10	281.94	
2016	232.96	221.76	219.09	228.93	248.02	243.80	270.79	263.91	270.85	245.87	263.97	260.88	
2017	270.49	305.07	315.32	318.79	294.29	318.16	310.91	322.70	331.45	331.49	352.83	356.33	
2018	379.63	389.78	388.65	395.52	411.90	415.07							

IC2 (SEK) PERFORMANCE %. NET OF FEES													
YEAR	JAN	FEB	MAR	APR	MAY	JUN	JUL	AUG	SEP	OCT	NOV	DEC	TOTAL
2013	5.95	3.38	6.92	5.32	6.23	-1.67	10.66	-0.33	3.84	-2.14	10.14	-0.16	58.77
2014	6.61	5.24	-4.27	-4.52	5.98	5.64	1.24	6.98	1.85	8.79	3.98	5.91	51.74
2015	9.72	7.35	6.03	-5.08	9.94	-2.57	6.60	-10.15	-13.96	8.66	5.19	-2.14	17.03
2016	-17.37	-4.81	-1.20	4.49	8.34	-1.70	11.07	-2.54	2.63	-9.22	7.36	-1.17	-7.47
2017	3.68	12.78	3.36	1.10	-7.69	8.11	-2.28	3.79	2.71	0.01	6.44	0.99	36.59
2018	6.54	2.67	-0.29	1.77	4.14	0.77							16.48

IC1 (USD) NAV													
YEAR	JAN	FEB	MAR	APR	MAY	JUN	JUL	AUG	SEP	OCT	NOV	DEC	
2015		106.43	109.37	107.12	114.84	114.48	118.78	107.70	93.74	100.50	102.88	104.09	
2016	84.51	80.27	84.02	88.68	92.24	89.25	98.50	95.48	98.04	84.48	88.63	88.85	
2017	95.78	104.78	110.08	112.50	105.65	116.97	118.72	124.26	125.01	121.84	130.74	133.94	
2018	147.42	145.05	143.28	140.20	145.38	144.95							

IC1 (USD) PERFORMANCE %. NET OF FEES													
YEAR	JAN	FEB	MAR	APR	MAY	JUN	JUL	AUG	SEP	OCT	NOV	DEC	TOTAL
2015		6.43	2.76	-2.06	7.21	-0.31	3.76	-9.33	-12.96	7.21	2.37	1.18	4.09
2016	-18.81	-5.02	4.67	5.55	4.01	-3.24	10.36	-3.07	2.68	-13.83	4.91	0.25	-14.64
2017	7.80	9.40	5.06	2.20	-6.09	10.71	1.50	4.67	0.60	-2.54	7.30	2.45	50.75
2018	10.06	-1.61	-1.22	-2.15	3.69	-0.30							8.22

HISTORICAL RETURNS AND NAVS

IC2 (USD) NAV													
YEAR	JAN	FEB	MAR	APR	MAY	JUN	JUL	AUG	SEP	OCT	NOV	DEC	
2014					102.92	108.60	106.82	113.71	112.69	120.10	124.21	126.40	
2015	132.75	141.32	145.96	143.02	153.38	152.95	158.76	143.26	124.74	133.79	137.03	138.70	
2016	112.66	107.07	112.12	118.40	123.21	119.27	131.69	127.71	131.20	113.12	118.73	119.08	
2017	128.42	140.54	147.72	151.02	141.89	156.98	159.38	166.89	167.94	163.77	175.76	180.12	
2018	198.33	195.19	192.99	188.92	195.95	195.44							

IC2 (USD) PERFORMANCE %. NET OF FEES													
YEAR	JAN	FEB	MAR	APR	MAY	JUN	JUL	AUG	SEP	OCT	NOV	DEC	TOTAL
2014					2.92	5.52	-1.64	6.45	-0.90	6.58	3.42	1.76	26.40
2015	5.02	6.46	3.28	-2.01	7.24	-0.28	3.80	-9.76	-12.93	7.26	2.42	1.22	9.73
2016	-18.77	-4.96	4.72	5.60	4.06	-3.20	10.41	-3.02	2.73	-13.78	4.96	0.29	-14.15
2017	7.84	9.44	5.11	2.23	-6.05	10.63	1.53	4.71	0.63	-2.48	7.32	2.48	51.26
2018	10.11	-1.58	-1.13	-2.11	3.72	-0.26							8.51

IC3 (EUR) NAV													
YEAR	JAN	FEB	MAR	APR	MAY	JUN	JUL	AUG	SEP	OCT	NOV	DEC	
2009								102.15	103.33	96.78	101.30	109.19	
2010	114.20	116.43	124.73	119.62	106.33	104.06	100.57	100.37	107.52	109.68	113.59	120.00	
2011	118.82	121.50	120.59	124.92	131.89	126.43	125.36	116.73	115.66	122.76	124.53	132.03	
2012	140.67	142.42	148.58	149.43	149.16	159.24	161.09	161.06	166.38	157.79	162.21	159.79	
2013	170.25	180.70	196.39	203.85	216.23	208.50	235.66	233.03	244.50	236.34	260.09	260.40	
2014	280.76	296.58	279.47	263.97	278.02	294.48	296.09	321.00	329.83	356.89	372.31	389.50	
2015	437.99	471.80	508.68	477.10	527.32	518.14	544.00	481.68	420.82	455.95	488.29	480.47	
2016	391.59	370.46	369.62	388.23	415.58	403.47	441.58	430.05	437.55	386.50	419.24	422.75	
2017	444.79	494.96	516.44	518.14	471.42	517.72	509.84	533.67	539.99	534.17	563.68	575.38	
2018	620.04	620.31	607.45	604.83	647.20	644.96							

IC3 (EUR) PERFORMANCE %. NET OF FEES													
YEAR	JAN	FEB	MAR	APR	MAY	JUN	JUL	AUG	SEP	OCT	NOV	DEC	TOTAL
2009								2.15	1.16	-6.34	4.67	7.79	9.19
2010	4.59	1.95	7.13	-4.10	-11.11	-2.13	-3.35	-0.20	7.12	2.01	3.56	5.64	9.90
2011	-0.98	2.26	-0.75	3.59	5.58	-4.14	-0.85	-6.88	-0.92	6.14	1.44	6.02	10.03
2012	6.54	1.24	4.33	0.57	-0.18	6.76	1.16	-0.02	3.30	-5.16	2.80	-1.49	21.03
2013	6.55	6.14	8.68	3.80	6.07	-3.57	13.03	-1.12	4.92	-3.34	10.05	0.12	62.96
2014	7.82	5.63	-5.77	-5.55	5.32	5.92	0.55	8.41	2.75	8.20	4.32	4.62	49.58
2015	12.45	7.72	7.82	-6.21	10.53	-1.74	4.99	-11.46	-12.63	8.35	7.09	-1.60	23.36
2016	-18.50	-5.40	-0.23	5.03	7.04	-2.91	9.45	-2.61	1.74	-11.67	8.47	0.84	-12.01
2017	5.21	11.28	4.34	0.33	-9.02	9.82	-1.52	4.67	1.18	-1.08	5.52	2.08	36.10
2018	7.76	0.04	-2.07	-0.43	7.01	-0.35							12.09

ID1 (SEK) NAV													
YEAR	JAN	FEB	MAR	APR	MAY	JUN	JUL	AUG	SEP	OCT	NOV	DEC	
2012					100.64	104.51	101.00	100.77	105.42	101.93	105.47	103.07	
2013	109.66	109.21	116.69	122.83	130.33	127.88	141.46	140.87	146.24	143.04	157.52	157.19	
2014	167.54	168.39	161.54	154.18	163.36	172.51	174.59	186.71	190.10	206.73	214.90	227.49	
2015	249.52	256.41	271.30	257.41	282.93	275.68	293.76	263.61	226.72	246.24	258.91	253.27	
2016	209.19	186.39	184.08	192.27	208.21	204.58	227.14	221.28	227.01	205.99	221.08	218.41	
2017	226.36	247.58	257.17	259.92	239.81	259.22	253.21	262.73	269.78	269.72	287.00	289.42	
2018	308.23	298.96	297.90	303.06	315.52	317.84							

HISTORICAL RETURNS AND NAVS

ID1 (SEK) PERFORMANCE %. NET OF FEES													
YEAR	JAN	FEB	MAR	APR	MAY	JUN	JUL	AUG	SEP	OCT	NOV	DEC	TOTAL
2012					0.64	3.85	-3.36	-0.23	4.61	-3.31	3.47	-2.28	3.07
2013	6.39	-0.41	6.85	5.26	6.11	-1.88	10.62	-0.42	3.81	-2.19	10.12	-0.21	52.51
2014	6.58	0.51	-4.07	-4.56	5.95	5.60	1.21	6.94	1.82	8.75	3.95	5.86	44.72
2015	9.68	2.76	5.81	-5.12	9.91	-2.56	6.56	-10.26	-13.99	8.61	5.15	-2.18	11.33
2016	-17.40	-10.90	-1.24	4.45	8.29	-1.74	11.03	-2.58	2.59	-9.26	7.33	-1.21	-13.76
2017	3.64	9.37	3.87	1.07	-7.74	8.09	-2.32	3.76	2.68	-0.02	6.41	0.84	32.51
2018	6.50	-3.01	-0.35	1.73	4.11	0.74							9.82

RC1 (EUR) NAV													
YEAR	JAN	FEB	MAR	APR	MAY	JUN	JUL	AUG	SEP	OCT	NOV	DEC	
2010									104.35	104.75	110.36	115.32	
2011	114.18	116.50	115.79	119.40	125.10	120.47	119.15	110.91	109.86	116.68	118.31	124.92	
2012	132.14	133.59	138.66	139.34	139.09	147.39	148.89	148.83	153.16	145.20	149.21	146.92	
2013	156.14	164.59	177.28	183.22	192.89	185.65	206.96	204.86	212.69	205.49	224.58	224.79	
2014	240.30	251.66	236.42	223.21	235.00	247.45	248.60	266.95	273.34	293.13	304.24	315.14	
2015	349.47	373.47	398.19	373.48	411.03	404.45	422.31	375.75	328.13	355.37	380.41	374.15	
2016	304.81	288.23	287.45	301.80	322.91	313.37	342.82	333.71	339.38	299.66	324.90	327.48	
2017	344.40	383.08	399.53	400.83	364.36	400.14	393.87	411.29	415.46	410.84	431.35	439.53	
2018	469.64	469.79	461.25	459.04	487.65	485.62							

RC1 (EUR) PERFORMANCE %. NET OF FEES													
YEAR	JAN	FEB	MAR	APR	MAY	JUN	JUL	AUG	SEP	OCT	NOV	DEC	TOTAL
2010									4.35	0.38	5.36	4.49	15.32
2011	-0.99	2.03	-0.61	3.12	4.77	-3.70	-1.10	-6.92	-0.95	6.21	1.40	5.59	8.32
2012	5.78	1.10	3.80	0.49	-0.18	5.97	1.02	-0.04	2.91	-5.20	2.76	-1.53	17.61
2013	6.28	5.41	7.71	3.35	5.28	-3.75	11.48	-1.01	3.82	-3.39	9.29	0.09	53.00
2014	6.90	4.73	-6.06	-5.59	5.28	5.30	0.46	7.38	2.39	7.24	3.80	3.58	40.19
2015	10.89	6.87	6.62	-6.21	10.05	-1.60	4.42	-11.03	-12.67	8.30	7.05	-1.65	18.73
2016	-18.53	-5.44	-0.27	4.99	6.99	-2.95	9.40	-2.66	1.70	-11.70	8.42	0.79	-12.47
2017	5.17	11.23	4.29	0.33	-9.10	9.82	-1.57	4.42	1.01	-1.11	4.99	1.90	34.22
2018	6.85	0.03	-1.82	-0.48	6.23	-0.42							10.49

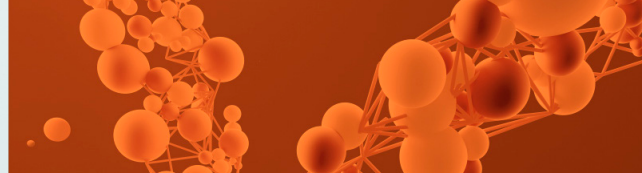
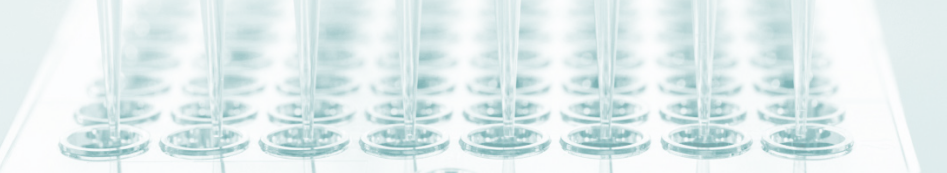
RC1 (SEK) NAV													
YEAR	JAN	FEB	MAR	APR	MAY	JUN	JUL	AUG	SEP	OCT	NOV	DEC	
2009						99.74	99.92	101.00	101.51	96.72	101.85	106.75	
2010	110.70	108.05	115.09	109.18	96.69	93.87	89.69	88.93	93.37	96.59	98.29	102.16	
2011	98.91	100.22	101.80	105.28	111.04	109.04	107.03	100.09	100.29	104.24	106.42	111.05	
2012	118.78	118.87	123.79	125.05	125.79	130.61	126.17	125.85	131.65	127.25	131.60	128.55	
2013	136.76	141.24	150.89	158.78	168.47	165.25	182.72	181.89	188.61	184.41	203.02	202.38	
2014	215.63	226.61	216.26	206.33	218.55	230.73	233.43	249.55	253.98	276.09	286.74	302.97	
2015	332.20	356.11	376.45	357.02	392.32	381.98	406.89	365.09	313.86	340.74	358.11	350.16	
2016	289.10	274.97	271.43	283.40	306.76	301.29	334.38	325.60	333.90	302.85	324.90	320.85	
2017	332.37	374.59	388.12	392.14	361.60	390.79	381.55	395.80	406.28	406.01	431.88	435.88	
2018	464.01	476.10	474.20	482.24	501.86	505.35							

RC1 (SEK) PERFORMANCE %. NET OF FEES													
YEAR	JAN	FEB	MAR	APR	MAY	JUN	JUL	AUG	SEP	OCT	NOV	DEC	TOTAL
2009						-0.26	0.18	1.08	0.50	-4.72	5.30	4.81	6.75
2010	3.70	-2.39	6.52	-5.14	-11.44	-2.92	-4.45	-0.85	4.99	3.45	1.76	3.94	-4.30
2011	-3.18	1.32	1.58	3.42	5.47	-1.80	-1.84	-6.48	0.20	3.94	2.09	4.35	8.70
2012	6.96	0.08	4.14	1.02	0.59	3.83	-3.40	-0.25	4.61	-3.34	3.42	-2.32	15.76
2013	6.39	3.28	6.83	5.23	6.10	-1.91	10.57	-0.45	3.69	-2.23	10.09	-0.32	57.43
2014	6.55	5.09	-4.57	-4.59	5.92	5.57	1.17	6.91	1.78	8.71	3.86	5.66	49.70
2015	9.65	7.20	5.71	-5.16	9.89	-2.64	6.52	-10.27	-14.03	8.56	5.10	-2.22	15.58
2016	-17.44	-4.89	-1.29	4.41	8.24	-1.78	10.98	-2.63	2.55	-9.30	7.28	-1.25	-8.37
2017	3.59	12.70	3.61	1.04	-7.79	8.07	-2.36	3.73	2.65	-0.07	6.37	0.93	35.85
2018	6.45	2.61	-0.40	1.70	4.07	0.70							15.94

HISTORICAL RETURNS AND NAVS

RC2 (SEK) NAV													
YEAR	JAN	FEB	MAR	APR	MAY	JUN	JUL	AUG	SEP	OCT	NOV	DEC	
2009						99.74	99.98	101.12	101.68	96.94	102.10	107.07	
2010	111.07	108.57	115.69	109.78	97.28	94.47	90.31	89.58	94.10	97.38	99.14	103.08	
2011	99.84	101.20	102.84	106.40	112.28	110.30	108.32	101.33	101.58	105.64	107.89	112.63	
2012	120.30	120.44	125.51	126.83	127.66	132.58	128.13	127.86	133.77	129.36	133.84	130.80	
2013	139.17	143.74	153.48	161.57	171.53	167.92	185.74	185.04	192.06	187.86	206.87	206.39	
2014	219.98	231.28	221.05	210.98	223.54	236.05	238.90	255.47	260.24	283.00	293.97	310.92	
2015	341.02	365.80	386.77	366.96	403.34	392.85	418.61	375.87	323.26	351.09	369.14	361.10	
2016	298.25	283.80	280.26	292.73	317.00	311.48	345.83	336.89	345.62	313.62	336.59	332.52	
2017	344.62	388.54	402.06	406.34	374.90	405.23	395.81	410.70	421.71	421.61	448.59	452.80	
2018	482.21	495.26	493.58	502.12	522.72	526.43							

RC2 (SEK) PERFORMANCE %. NET OF FEES													
YEAR	JAN	FEB	MAR	APR	MAY	JUN	JUL	AUG	SEP	OCT	NOV	DEC	TOTAL
2009						-0.26	0.24	1.14	0.55	-4.66	5.32	4.87	7.07
2010	3.74	-2.25	6.56	-5.11	-11.39	-2.89	-4.40	-0.81	5.05	3.49	1.81	3.97	-3.73
2011	-3.14	1.36	1.62	3.46	5.53	-1.76	-1.80	-6.45	0.25	4.00	2.13	4.39	9.26
2012	6.81	0.12	4.21	1.05	0.65	3.85	-3.36	-0.21	4.62	-3.30	3.46	-2.27	16.13
2013	6.40	3.28	6.78	5.27	6.16	-2.10	10.61	-0.38	3.79	-2.19	10.12	-0.23	57.79
2014	6.58	5.14	-4.42	-4.56	5.95	5.60	1.21	6.94	1.87	8.75	3.88	5.77	50.65
2015	9.68	7.27	5.73	-5.12	9.91	-2.60	6.56	-10.21	-14.00	8.61	5.14	-2.18	16.14
2016	-17.41	-4.84	-1.25	4.45	8.29	-1.74	11.03	-2.59	2.59	-9.26	7.32	-1.21	-7.91
2017	3.64	12.74	3.48	1.06	-7.74	8.09	-2.32	3.76	2.68	-0.02	6.40	0.94	36.17
2018	6.50	2.71	-0.34	1.73	4.10	0.71							16.26



ABOUT RHENMAN & PARTNERS

Rhenman & Partners Asset Management, founded in 2008, is a Stockholm-based investment manager focusing on two niche funds administered by SEB Fund Services S.A.: Rhenman Healthcare Equity L/S, founded in 2009, and Rhenman Global Opportunities L/S, founded in 2016. Assets under management amount to approximately EUR 600m. Investment Teams of both Funds are in their investment processes supported by renowned Advisory Boards, including professors and experts with many years of market experience and extensive networks around the world.

Legal Disclaimer

Rhenman Healthcare Equity L/S. "The Fund" is not an investment fund as defined in the European Union directives relating to undertakings for collective investment in transferable securities (UCITS). Legal information regarding Fund is contained in the Prospectus and the KIID, available at Rhenman & Partners Asset Management AB (Rhenman & Partners) webpage: <http://rhepa.com/the-fund/prospectus/>.

This material has been prepared by Rhenman & Partners for professional and non-professional investors. Rhenman & Partners when preparing this information has not taken into account any one customer's particular investment objectives, financial resources or other relevant circumstances and the opinions and recommendations herein are not intended to represent recommendations of particular investments to particular customers. This material is for informational purposes only and should not be construed as an offer or solicitation to sell or buy units the Fund. Investors is strongly recommended to get professional advice as to whether investment in the Fund is appropriate having regard to their particular investment needs, objectives and financial circumstances, before investing.

All securities' transactions involve risks, which include (among others) the risk of adverse or unanticipated market, financial or political developments and, in international transactions, currency risk. There can be no assurance that an investment in the Fund will achieve profits or avoid incurring substantial losses. There is a high degree of risk inherent in investments and they may not be suitable for all eligible investors. It is possible that an investor may lose some or all of its investment. The past is not necessarily a guide to the future performance of an investment. The value of investments may fall as well as rise and investors may not get back the amount invested. Changes in rates of foreign exchange may cause the value of investments to go up or down.

Before making an investment decision, an investor and/or its adviser should (i) consider the suitability of investments in the Fund with respect to its investment objectives and personal situation and (ii) consider factors such as its personal net worth, income, age, risk tolerance and liquidity needs. Short-term investors and investors who cannot bear the loss of some or all of their investment or the risks associated with the limited liquidity of an investment should not invest.

Due care and attention has been used in the preparation of this information. However, actual results may vary from their forecasts, and any variation may be materially positive or negative. Forecasts, by their very nature, are subject to uncertainty and contingencies, many of which are outside the control of Rhenman & Partners. Rhenman & Partners cannot guarantee that the information contained herein is without fault or entirely accurate. There may be

delays, omissions or inaccuracies in the information. Any dated information is published as of its date only and no obligation or responsibility is undertaken to update or amend any such information.

The information in this material is based on sources that Rhenman & Partners believes to be reliable. Rhenman & Partners can however not guarantee that all information is correct. Furthermore, information and opinions may change without notice. Rhenman & Partners is under no obligation to make amendments or changes to this publication if errors are found or opinions or information change. Rhenman & Partners accepts no responsibility for the accuracy of its sources.

Rhenman & Partners is the owner of all works of authorship including, but not limited to, all design text, images and trademarks in this material unless otherwise explicitly stated. The use of Rhenman & Partners' material, works or trademarks is forbidden without written consent except where otherwise expressly stated. Furthermore, it is prohibited to publish material made or gathered by Rhenman & Partners without written consent.

By accessing and using the <http://rhepa.com/> website and any pages thereof, you acknowledge that you have reviewed the following important legal information and understand and agree to the terms and conditions set therein. If you do not agree to the terms and conditions in this disclaimer, do not access or use <http://rhepa.com/> website in any way.

Products and services described herein are not available to all persons in all geographical locations. Rhenman & Partner will not provide any such products or services to any person if the provision of such services could be in violation of law or regulation in such person's home country jurisdiction or any other related jurisdiction. The units of the Fund may not be offered or sold to or within the United States or in any other country where such offer or sale would conflict with applicable laws or regulations.

In no event, including (but not limited to) negligence, will Rhenman & Partner be liable to you or anyone else for any consequential, incidental, special or indirect damages (including but not limited to lost profits, trading losses and damages).

The sole legally binding basis for the purchase of shares of the Fund described in this information is the latest valid sales prospectus with its terms of contract. Subscriptions cannot be received on the basis of financial reports.

An investment in the Fund does not represent deposits or other liabilities of any member of the Rhenman & Partners Group. Neither Rhenman & Partners nor any member of the Rhenman & Partners Group and its affiliates guarantees in any way the performance of the Fund, repayment of capital from the Fund, any particular return from or any increase in the value of the Fund.

Subscribe to our monthly newsletter at RHEPA.COM

CONTACT DETAILS:

Rhenman & Partners
Asset Management AB
Strandvägen 5A
114 51 Stockholm, Sweden
Tel + 46 8 459 88 80
info@rhepa.com

SWEDISH INVESTORS:

Anders Grelsson
Swedish Investor Relations
Mob + 46 70 374 43 20
anders@rhepa.com

INTERNATIONAL INVESTORS (NON SWEDISH):

Carl Grevelius
Head of Investor Relations
Tel + 46 8 459 88 83
carl@rhepa.com

