



# RHENMAN HEALTHCARE EQUITY L/S

July 2018

IC1 (EUR)

**+4.32%**

RC1 (SEK)

**+2.99%**

- Annualised return of 21 % (net) since inception.
- Over 20 years managing successful healthcare funds.
- World renowned industry professionals each with over 30 years experience actively involved through the Scientific Advisory Board.

## Monthly update

During May and June, investors were fully focused on political events; not least President Trump's various moves on trade. In July, however, their interest shifted to corporate earnings reports.

Overall, July's reports were full of good or better-than-expected news which supported risk willingness. The most notable event, however, was the market's extremely negative reaction to two of the so-called FAANG companies, Facebook and Netflix. Lower-than-expected growth in the second quarter and more moderate forecasts for the third quarter led to falling share prices of 15-20 percent for both companies. Facebook lost about 150 billion dollars in market capitalization in one day, more than any other company has ever done.

At the same time, reports from several so-called value companies were received positively. The world index rose by slightly more than 2.6 percent measured in euro. The healthcare sector, industrial companies and banks led the climb, while consumer discretionary, energy and raw materials dragged down performance.

President Trump continued to set the agenda for political news reports. In mid-July, he met with the Russian President Vladimir Putin in Helsinki, setting off strong negative reactions in the United States. Later in the month, the President of the European Commission Jean-Claude Juncker visited the White House, and despite low expectations, the visit resulted in a joint statement on further negotiations to prevent extended tariffs between the United States and the EU. At the end of the month, Trump made an unexpected announcement to initiate a dialogue with Iran. This was most likely the result of

general concern that the fragile balance in the energy market could be upset if Iran were to be shut out.

Meanwhile, other events, such as the British government's continued dilemma concerning the Brexit process and the increasingly precarious financial situation in Turkey, had no major impact on the stock markets other than locally.

### FUND PERFORMANCE

Measured in its main share class IC1 (EUR), the fund rose 4.3 percent in July. The month was marked by broad gains in both biotechnology and pharmaceuticals. The gains in biotechnology were mainly driven by announcements by major companies in the sector of several successes in their research portfolios. One example was the phase II data for BAN2401, a new mechanism of action for the treatment of early Alzheimer's disease. The compound has its origins in Swedish BioArctic and is being developed by Biogen in partnership with Japanese Eisai.

Strong interim reports also created interest for the larger biotech companies, while, at the end of the month, share prices for some small and medium-sized biotech companies suffered from profit-taking. The Nasdaq Biotechnology Index NBI, which focuses on the larger companies, rose by roughly 6 percent during the month.

The pharmaceutical sector was the top-performing subsector during the month, with an increase of roughly 8 percent. The gain was driven by interim reports that surpassed market expectations, in combination with a general

*Continued on the next page →*

trend to rotate towards low-volatility blue-chip stocks ahead of the American midterm elections this fall.

The fund's best contributors during the month were Roche, Eli Lilly and ViewRay. The worst contributors were Abiomed, Sage Therapeutics and Arena Pharmaceuticals.

The Swiss pharmaceutical company Roche is one of the five largest holdings in the fund. Its valuation and share price development so far this year has been held back by the uncertainty that the market perceives in relation to the risk of slower growth and declining margins due to increased competition from so-called biosimilars. The company's interim report, however, beat market expectations, and together with an improved outlook for the full year and a generally greater interest in the global pharmaceutical sector, the share price performed strongly in July.

With the American pharmaceutical company Eli Lilly, we saw a similar pattern as that of Roche. The market has taken a cautious approach to the Eli Lilly stock, since it sees greater competition and the prospect of declining margins for the company's products for the treatment of diabetes. But a strong interim report and increased interest in the sector contributed to a positive development for the share price during the month.

ViewRay is a US company in the medical technology sector. The company sells a linear accelerator, which is a radiation therapy system for cancer tumors, combined with a magnetic camera that is able to image soft tissue in real time during treatment. This enables the treatment of tumors with more targeted precision, thereby sparing adjacent organs. In July, the board of directors at ViewRay announced that they would appoint a new company management. In addition, the company's technology was highlighted in scientific journals. This positive news, together with a new buy recommendation, resulted in strong share price performance during the month.

Abiomed is a US medical technology company. The company's product, Impella, is a minimally invasive cardiac pump that is world-leading in improving blood circulation while the patient's cardiac function is impaired. The technology behind Impella is unique and its area of application broad, which means a continued source of untapped growth potential for the product. Despite a strong interim report, the market was disappointed that the company did not raise its outlook for the rest of the year, resulting in a negative share price performance. The same thing happened a few years ago but the stock recovered, and its value has increased several times over since then.

The profit-taking we saw within the segment of small and

medium-sized biotech companies mainly affected the non-profit-generating companies. Among the worst contributors to the fund in this segment were Sage Therapeutics and Arena Pharmaceuticals. Sage Therapeutics is a US biopharmaceutical research company which has developed several drug candidates that interact with a receptor called GABA, to treat diseases in or linked to the central nervous system. In clinical studies, the company has shown that this interaction has an effect both in postpartum depression and in major depression. The company's drug candidate for the treatment of major depression was granted breakthrough status by the FDA earlier this year. Arena Pharmaceuticals is also a US research company and has several clinical programs under development. One of these is ralinepag, a drug for the treatment of pulmonary arterial hypertension (PAH). PAH is a rare disease which, despite considerable medical progress, lacks adequate treatment options. The company is expected to begin phase III trials in the second half of 2018. Both Sage and Arena are fundamentally performing well, but the market now wants to see additional progress.

## FORECAST

We are now entering a kind of waiting period that will end with the US midterm elections in November. This is something the market is both well aware of and worried about, and a correction during the holiday month of August is a possibility. At the same time, the reporting period was very strong. So, we believe that the magnitude of a possible fall will not be particularly high unless something unexpected occurs.

The discussion about pharmaceutical prices will likely flare up occasionally, despite the fact that several companies are now holding off on additional price increases for the current year at the direct request of President Trump. Any more news on the subject will not be forthcoming until after the elections. At that point, the Trump administration will present more elaborate proposals on how the current systems will be reformed, including new regulations on the extensive rebating practices, so as to enable rebate benefits to patients immediately at the time of purchase when their prescriptions are picked up. Equally interesting in the long term, we believe, is the on-going radicalization within the left-leaning faction of the Democratic Party, which is going to the polls running on "Medicare for All" (i.e. universal health insurance). It is a proposal with a long history and is gaining ground ahead of the elections. The market, however, is not particularly concerned about this occasionally hot topic at this time, but is rather focusing on the sector's growth potential and attractive valuation.

## Fund characteristics

### KIID AND PROSPECTUS (WEBPAGE)

<http://fundinfo.sebfundservices.lu/RhenmanPartnersFund/>

### INVESTABLE CURRENCIES

Euro (EUR) / Swedish Krona (SEK) / US Dollar (USD)

### TARGET FUND SIZE

EUR 1bn (hard close)

### RETURN TARGET

Annualised net returns in excess of 12% over time

### LEGAL STRUCTURE

AIF / FCP (Fonds Commun de Placement) under Part II of the Luxembourg Law on Investment Funds

### PORTFOLIO MANAGER

Rhenman & Partners Asset Management AB

### INVESTMENT TEAM

Henrik Rhenman & Susanna Urdmark

### AIFM / MANAGEMENT COMPANY

SEB Fund Services S.A.

### PRIME BROKER

Skandinaviska Enskilda Banken AB (publ)

### DEPOSITARY AND PAYING AGENT

Skandinaviska Enskilda Banken S.A.

### AUDITOR

PricewaterhouseCoopers (PwC)

### SUBSCRIPTION/REDEMPTION

Monthly

### MINIMUM TOP UP

No minimum

### NOTICE PERIOD

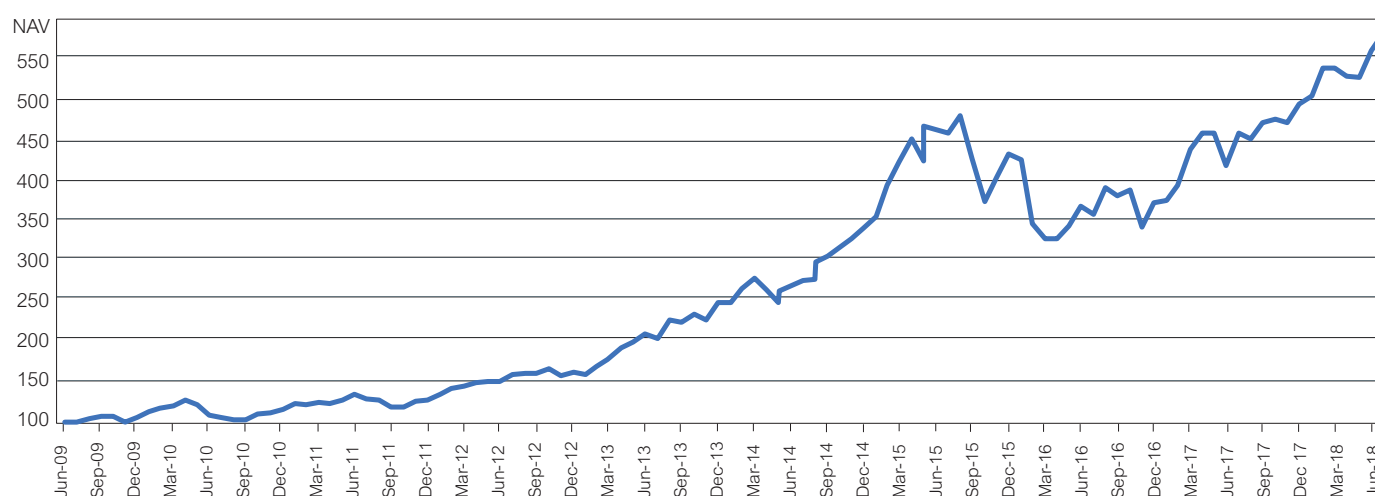
3 working days

### HURDLE RATE

Euribor 90D (high-water mark)

**+21%**  
annualised return since inception

## FUND PERFORMANCE - IC1 (EUR)

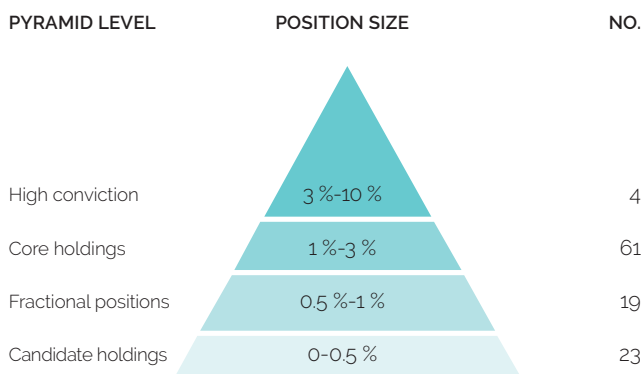


## JULY 2018

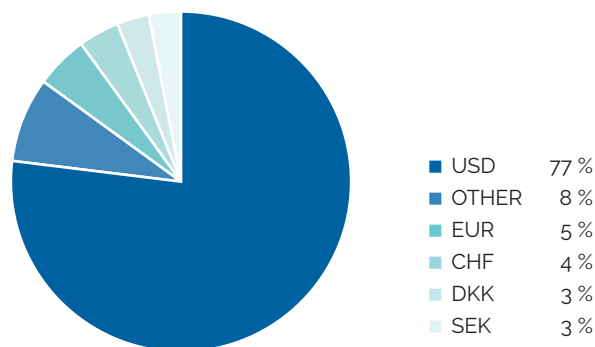
SHARE CLASS	NAV <sup>1</sup>	MONTHLY RETURN <sup>1</sup>	YTD 2018 <sup>1</sup>	SINCE INCEPTION <sup>1</sup>
IC1 (EUR)	578.66	4.32%	15.48%	478.66%
IC3 (EUR)	676.32	4.86%	17.54%	576.32%
IC2 (SEK)	427.79	3.06%	20.05%	327.79%
ID1 (SEK)	327.46	3.03%	13.14%	227.46%
IC1 (USD)	151.45	4.48%	13.07%	51.45%
IC2 (USD)	204.27	4.52%	13.41%	104.27%
RC1 (EUR)	506.41	4.28%	15.22%	406.41%
RC1 (SEK)	520.45	2.99%	19.40%	420.45%
RC2 (SEK)	542.35	3.02%	19.78%	442.35%
3 mån Euribor (EUR)	103.16	0.00%	-0.11%	3.16%

**Note:** 1) Please find launch date information on page 5-8.

## PORTFOLIO CONSTRUCTION<sup>2</sup>



## CURRENCY EXPOSURE<sup>3</sup>



### RISK (IC1 EUR)

Value at risk <sup>5</sup>	2.05 %
Standard Deviation <sup>6</sup>	19.75 %
Sharpe Ratio <sup>6</sup>	1.06

### EXPOSURE<sup>4</sup>

Long	154 %
Short	-20 %
Gross	174 %
Net	134 %

### AUM<sup>7</sup>

Fund:	
EUR 666m	
USD 780m	
<b>Total: EUR 676m</b>	

### LARGEST LONG POSITIONS

1 Roche Holding Ltd Pref
2 Nektar Therapeutics
3 Abiomed Inc
4 CVS Health Corp
5 Express Scripts Hg Co

## SHARE CLASS CHARACTERISTICS – INSTITUTIONAL SHARE CLASSES – ONLY INSTITUTIONAL INVESTORS<sup>8</sup>

MINIMUM INVESTMENT		MGT. FEE	PERF. FEE	ISIN NO.	BLOOMBERG TICKER	LIPPER REUTERS	TELEKURS
IC1 (EUR)	250 000	1.50 %	20 %	LU0417598108	RHLEIC1 LX	65147588	10034579
IC3 (EUR)	5 000 000	1.50 %	10 %	LU0434614789	RHHIC3 LX	68014068	10283697
IC2 (SEK)	50 000 000	1.00 %	20 %	LU0417598793	RHHIC2S LX	68204997	20323930
ID1 (SEK)	100 000	1.50 %	20 %	LU0417599098	RHHIC1D1 LX	68153820	18491109
IC1 (USD)	300 000	1.50 %	20 %	LU0417598280	RHUI1A LX	68305812	26812813
IC2 (USD)	6 000 000	1.00 %	20 %	LU0417598520	RHUI2U LX	68265724	24456000

## SHARE CLASS CHARACTERISTICS – RETAIL SHARE CLASSES – ALSO OPEN TO INSTITUTIONAL INVESTORS<sup>8</sup>

MINIMUM INVESTMENT		MGT. FEE	PERF. FEE	ISIN NO.	BLOOMBERG TICKER	LIPPER REUTERS	TELEKURS
RC1 (EUR)	2 500	2.00 %	20 %	LU0417597555	RHLERC1 LX	65147589	10034567
RC1 (SEK)	500	2.00 %	20 %	LU0417597712	RHLSRC1 LX	68014067	10239523
RC2 (SEK)	2 500 000	1.50 %	20 %	LU0417598017	RHLSRC2 LX	68015239	10239528

**Notes:** 2) As a percentage of the market value of the long and short positions (excluding cash positions). 3) Number of long equity positions (excluding any ETFs). 4) The exposure is adjusted for net fund flow at month end. 5) For holdings at month end (95 % conf. int. 250 days history). 6) Standard deviation and Sharpe ratio are annualized. 7) The AUM is adjusted for net fund flow at month end. 8) Administrative fees are charged in addition to the fees above. Further information is available in the KIID as well as the prospectus (part B. A14-18).

## NAV & PERFORMANCE DATA

IC1 (EUR) NAV													
YEAR	JAN	FEB	MAR	APR	MAY	JUN	JUL	AUG	SEP	OCT	NOV	DEC	
2009						100.75	105.19	107.47	107.83	100.99	105.70	113.28	
2010	117.91	119.94	127.53	122.31	108.73	106.40	102.84	102.63	109.95	112.16	116.17	122.73	
2011	121.53	124.28	123.35	127.79	134.24	129.26	128.19	119.36	118.28	125.67	127.48	134.59	
2012	142.42	143.99	149.51	150.29	150.07	159.07	160.74	160.74	165.47	156.93	161.34	158.92	
2013	168.92	178.11	191.91	198.41	209.10	202.53	225.87	223.66	233.45	225.66	246.67	246.79	
2014	263.91	277.13	262.34	247.80	260.99	274.87	276.25	296.82	304.03	326.16	338.66	352.48	
2015	391.34	419.34	448.65	421.01	463.44	456.29	476.60	424.39	370.76	401.72	430.21	423.32	
2016	345.01	326.39	325.66	342.05	366.15	355.48	389.06	378.89	385.50	340.52	369.37	372.46	
2017	391.88	436.08	454.95	456.28	415.30	455.96	449.05	468.44	473.40	468.37	491.88	501.07	
2018	535.61	535.64	525.88	523.61	556.39	554.68	578.66						

IC1 (EUR) PERFORMANCE %. NET OF FEES													
YEAR	JAN	FEB	MAR	APR	MAY	JUN	JUL	AUG	SEP	OCT	NOV	DEC	TOTAL
2009						0.75	4.41	2.17	0.33	-6.34	4.66	7.17	13.28
2010	4.09	1.72	6.33	-4.09	-11.10	-2.14	-3.35	-0.20	7.13	2.01	3.58	5.65	8.34
2011	-0.98	2.26	-0.75	3.60	5.05	-3.71	-0.83	-6.89	-0.90	6.25	1.44	5.58	9.66
2012	5.82	1.10	3.83	0.52	-0.15	6.00	1.05	0.00	2.94	-5.16	2.81	-1.50	18.08
2013	6.29	5.44	7.75	3.39	5.39	-3.14	11.52	-0.98	4.38	-3.34	9.31	0.05	55.29
2014	6.94	5.01	-5.34	-5.54	5.32	5.32	0.50	7.45	2.43	7.28	3.83	4.08	42.83
2015	11.02	7.15	6.99	-6.16	10.08	-1.54	4.45	-10.95	-12.64	8.35	7.09	-1.60	20.10
2016	-18.50	-5.40	-0.22	5.03	7.05	-2.91	9.45	-2.61	1.74	-11.67	8.47	0.84	-12.01
2017	5.21	11.28	4.33	0.29	-8.98	9.79	-1.52	4.32	1.06	-1.06	5.02	1.87	34.53
2018	6.89	0.01	-1.82	-0.43	6.26	-0.31	4.32						15.48

IC2 (SEK) NAV													
YEAR	JAN	FEB	MAR	APR	MAY	JUN	JUL	AUG	SEP	OCT	NOV	DEC	
2013	105.95	109.53	117.11	123.34	131.02	128.83	142.56	142.09	147.55	144.39	159.03	158.77	
2014	169.27	178.14	170.53	162.83	172.56	182.30	184.56	197.44	201.10	218.77	227.47	240.91	
2015	264.32	283.76	300.86	285.57	313.96	305.90	326.08	292.97	252.07	273.89	288.10	281.94	
2016	232.96	221.76	219.09	228.93	248.02	243.80	270.79	263.91	270.85	245.87	263.97	260.88	
2017	270.49	305.07	315.32	318.79	294.29	318.16	310.91	322.70	331.45	331.49	352.83	356.33	
2018	379.63	389.78	388.65	395.52	411.90	415.07	427.79						

IC2 (SEK) PERFORMANCE %. NET OF FEES													
YEAR	JAN	FEB	MAR	APR	MAY	JUN	JUL	AUG	SEP	OCT	NOV	DEC	TOTAL
2013	5.95	3.38	6.92	5.32	6.23	-1.67	10.66	-0.33	3.84	-2.14	10.14	-0.16	58.77
2014	6.61	5.24	-4.27	-4.52	5.98	5.64	1.24	6.98	1.85	8.79	3.98	5.91	51.74
2015	9.72	7.35	6.03	-5.08	9.94	-2.57	6.60	-10.15	-13.96	8.66	5.19	-2.14	17.03
2016	-17.37	-4.81	-1.20	4.49	8.34	-1.70	11.07	-2.54	2.63	-9.22	7.36	-1.17	-7.47
2017	3.68	12.78	3.36	1.10	-7.69	8.11	-2.28	3.79	2.71	0.01	6.44	0.99	36.59
2018	6.54	2.67	-0.29	1.77	4.14	0.77	3.06						20.05

IC1 (USD) NAV													
YEAR	JAN	FEB	MAR	APR	MAY	JUN	JUL	AUG	SEP	OCT	NOV	DEC	
2015		106.43	109.37	107.12	114.84	114.48	118.78	107.70	93.74	100.50	102.88	104.09	
2016	84.51	80.27	84.02	88.68	92.24	89.25	98.50	95.48	98.04	84.48	88.63	88.85	
2017	95.78	104.78	110.08	112.50	105.65	116.97	118.72	124.26	125.01	121.84	130.74	133.94	
2018	147.42	145.05	143.28	140.20	145.38	144.95	151.45						

IC1 (USD) PERFORMANCE %. NET OF FEES													
YEAR	JAN	FEB	MAR	APR	MAY	JUN	JUL	AUG	SEP	OCT	NOV	DEC	TOTAL
2015		6.43	2.76	-2.06	7.21	-0.31	3.76	-9.33	-12.96	7.21	2.37	1.18	4.09
2016	-18.81	-5.02	4.67	5.55	4.01	-3.24	10.36	-3.07	2.68	-13.83	4.91	0.25	-14.64
2017	7.80	9.40	5.06	2.20	-6.09	10.71	1.50	4.67	0.60	-2.54	7.30	2.45	50.75
2018	10.06	-1.61	-1.22	-2.15	3.69	-0.30	4.48						13.07



## NAV & PERFORMANCE DATA

IC2 (USD) NAV													
YEAR	JAN	FEB	MAR	APR	MAY	JUN	JUL	AUG	SEP	OCT	NOV	DEC	
2014					102.92	108.60	106.82	113.71	112.69	120.10	124.21	126.40	
2015	132.75	141.32	145.96	143.02	153.38	152.95	158.76	143.26	124.74	133.79	137.03	138.70	
2016	112.66	107.07	112.12	118.40	123.21	119.27	131.69	127.71	131.20	113.12	118.73	119.08	
2017	128.42	140.54	147.72	151.02	141.89	156.98	159.38	166.89	167.94	163.77	175.76	180.12	
2018	198.33	195.19	192.99	188.92	195.95	195.44	204.27						

IC2 (USD) PERFORMANCE %. NET OF FEES													
YEAR	JAN	FEB	MAR	APR	MAY	JUN	JUL	AUG	SEP	OCT	NOV	DEC	TOTAL
2014					2.92	5.52	-1.64	6.45	-0.90	6.58	3.42	1.76	26.40
2015	5.02	6.46	3.28	-2.01	7.24	-0.28	3.80	-9.76	-12.93	7.26	2.42	1.22	9.73
2016	-18.77	-4.96	4.72	5.60	4.06	-3.20	10.41	-3.02	2.73	-13.78	4.96	0.29	-14.15
2017	7.84	9.44	5.11	2.23	-6.05	10.63	1.53	4.71	0.63	-2.48	7.32	2.48	51.26
2018	10.11	-1.58	-1.13	-2.11	3.72	-0.26	4.52						13.41

IC3 (EUR) NAV													
YEAR	JAN	FEB	MAR	APR	MAY	JUN	JUL	AUG	SEP	OCT	NOV	DEC	
2009								102.15	103.33	96.78	101.30	109.19	
2010	114.20	116.43	124.73	119.62	106.33	104.06	100.57	100.37	107.52	109.68	113.59	120.00	
2011	118.82	121.50	120.59	124.92	131.89	126.43	125.36	116.73	115.66	122.76	124.53	132.03	
2012	140.67	142.42	148.58	149.43	149.16	159.24	161.09	161.06	166.38	157.79	162.21	159.79	
2013	170.25	180.70	196.39	203.85	216.23	208.50	235.66	233.03	244.50	236.34	260.09	260.40	
2014	280.76	296.58	279.47	263.97	278.02	294.48	296.09	321.00	329.83	356.89	372.31	389.50	
2015	437.99	471.80	508.68	477.10	527.32	518.14	544.00	481.68	420.82	455.95	488.29	480.47	
2016	391.59	370.46	369.62	388.23	415.58	403.47	441.58	430.05	437.55	386.50	419.24	422.75	
2017	444.79	494.96	516.44	518.14	471.42	517.72	509.84	533.67	539.99	534.17	563.68	575.38	
2018	620.04	620.31	607.45	604.83	647.20	644.96	676.32						

IC3 (EUR) PERFORMANCE %. NET OF FEES													
YEAR	JAN	FEB	MAR	APR	MAY	JUN	JUL	AUG	SEP	OCT	NOV	DEC	TOTAL
2009								2.15	1.16	-6.34	4.67	7.79	9.19
2010	4.59	1.95	7.13	-4.10	-11.11	-2.13	-3.35	-0.20	7.12	2.01	3.56	5.64	9.90
2011	-0.98	2.26	-0.75	3.59	5.58	-4.14	-0.85	-6.88	-0.92	6.14	1.44	6.02	10.03
2012	6.54	1.24	4.33	0.57	-0.18	6.76	1.16	-0.02	3.30	-5.16	2.80	-1.49	21.03
2013	6.55	6.14	8.68	3.80	6.07	-3.57	13.03	-1.12	4.92	-3.34	10.05	0.12	62.96
2014	7.82	5.63	-5.77	-5.55	5.32	5.92	0.55	8.41	2.75	8.20	4.32	4.62	49.58
2015	12.45	7.72	7.82	-6.21	10.53	-1.74	4.99	-11.46	-12.63	8.35	7.09	-1.60	23.36
2016	-18.50	-5.40	-0.23	5.03	7.04	-2.91	9.45	-2.61	1.74	-11.67	8.47	0.84	-12.01
2017	5.21	11.28	4.34	0.33	-9.02	9.82	-1.52	4.67	1.18	-1.08	5.52	2.08	36.10
2018	7.76	0.04	-2.07	-0.43	7.01	-0.35	4.86						17.54

ID1 (SEK) NAV													
YEAR	JAN	FEB	MAR	APR	MAY	JUN	JUL	AUG	SEP	OCT	NOV	DEC	
2012					100.64	104.51	101.00	100.77	105.42	101.93	105.47	103.07	
2013	109.66	109.21	116.69	122.83	130.33	127.88	141.46	140.87	146.24	143.04	157.52	157.19	
2014	167.54	168.39	161.54	154.18	163.36	172.51	174.59	186.71	190.10	206.73	214.90	227.49	
2015	249.52	256.41	271.30	257.41	282.93	275.68	293.76	263.61	226.72	246.24	258.91	253.27	
2016	209.19	186.39	184.08	192.27	208.21	204.58	227.14	221.28	227.01	205.99	221.08	218.41	
2017	226.36	247.58	257.17	259.92	239.81	259.22	253.21	262.73	269.78	269.72	287.00	289.42	
2018	308.23	298.96	297.90	303.06	315.52	317.84	327.46						

## NAV & PERFORMANCE DATA

ID1 (SEK) PERFORMANCE %. NET OF FEES													
YEAR	JAN	FEB	MAR	APR	MAY	JUN	JUL	AUG	SEP	OCT	NOV	DEC	TOTAL
2012					0.64	3.85	-3.36	-0.23	4.61	-3.31	3.47	-2.28	3.07
2013	6.39	-0.41	6.85	5.26	6.11	-1.88	10.62	-0.42	3.81	-2.19	10.12	-0.21	52.51
2014	6.58	0.51	-4.07	-4.56	5.95	5.60	1.21	6.94	1.82	8.75	3.95	5.86	44.72
2015	9.68	2.76	5.81	-5.12	9.91	-2.56	6.56	-10.26	-13.99	8.61	5.15	-2.18	11.33
2016	-17.40	-10.90	-1.24	4.45	8.29	-1.74	11.03	-2.58	2.59	-9.26	7.33	-1.21	-13.76
2017	3.64	9.37	3.87	1.07	-7.74	8.09	-2.32	3.76	2.68	-0.02	6.41	0.84	32.51
2018	6.50	-3.01	-0.35	1.73	4.11	0.74	3.03						13.14

RC1 (EUR) NAV													
YEAR	JAN	FEB	MAR	APR	MAY	JUN	JUL	AUG	SEP	OCT	NOV	DEC	
2010									104.35	104.75	110.36	115.32	
2011	114.18	116.50	115.79	119.40	125.10	120.47	119.15	110.91	109.86	116.68	118.31	124.92	
2012	132.14	133.59	138.66	139.34	139.09	147.39	148.89	148.83	153.16	145.20	149.21	146.92	
2013	156.14	164.59	177.28	183.22	192.89	185.65	206.96	204.86	212.69	205.49	224.58	224.79	
2014	240.30	251.66	236.42	223.21	235.00	247.45	248.60	266.95	273.34	293.13	304.24	315.14	
2015	349.47	373.47	398.19	373.48	411.03	404.45	422.31	375.75	328.13	355.37	380.41	374.15	
2016	304.81	288.23	287.45	301.80	322.91	313.37	342.82	333.71	339.38	299.66	324.90	327.48	
2017	344.40	383.08	399.53	400.83	364.36	400.14	393.87	411.29	415.46	410.84	431.35	439.53	
2018	469.64	469.79	461.25	459.04	487.65	485.62	506.41						

RC1 (EUR) PERFORMANCE %. NET OF FEES													
YEAR	JAN	FEB	MAR	APR	MAY	JUN	JUL	AUG	SEP	OCT	NOV	DEC	TOTAL
2010									4.35	0.38	5.36	4.49	15.32
2011	-0.99	2.03	-0.61	3.12	4.77	-3.70	-1.10	-6.92	-0.95	6.21	1.40	5.59	8.32
2012	5.78	1.10	3.80	0.49	-0.18	5.97	1.02	-0.04	2.91	-5.20	2.76	-1.53	17.61
2013	6.28	5.41	7.71	3.35	5.28	-3.75	11.48	-1.01	3.82	-3.39	9.29	0.09	53.00
2014	6.90	4.73	-6.06	-5.59	5.28	5.30	0.46	7.38	2.39	7.24	3.80	3.58	40.19
2015	10.89	6.87	6.62	-6.21	10.05	-1.60	4.42	-11.03	-12.67	8.30	7.05	-1.65	18.73
2016	-18.53	-5.44	-0.27	4.99	6.99	-2.95	9.40	-2.66	1.70	-11.70	8.42	0.79	-12.47
2017	5.17	11.23	4.29	0.33	-9.10	9.82	-1.57	4.42	1.01	-1.11	4.99	1.90	34.22
2018	6.85	0.03	-1.82	-0.48	6.23	-0.42	4.28						15.22

RC1 (SEK) NAV													
YEAR	JAN	FEB	MAR	APR	MAY	JUN	JUL	AUG	SEP	OCT	NOV	DEC	
2009						99.74	99.92	101.00	101.51	96.72	101.85	106.75	
2010	110.70	108.05	115.09	109.18	96.69	93.87	89.69	88.93	93.37	96.59	98.29	102.16	
2011	98.91	100.22	101.80	105.28	111.04	109.04	107.03	100.09	100.29	104.24	106.42	111.05	
2012	118.78	118.87	123.79	125.05	125.79	130.61	126.17	125.85	131.65	127.25	131.60	128.55	
2013	136.76	141.24	150.89	158.78	168.47	165.25	182.72	181.89	188.61	184.41	203.02	202.38	
2014	215.63	226.61	216.26	206.33	218.55	230.73	233.43	249.55	253.98	276.09	286.74	302.97	
2015	332.20	356.11	376.45	357.02	392.32	381.98	406.89	365.09	313.86	340.74	358.11	350.16	
2016	289.10	274.97	271.43	283.40	306.76	301.29	334.38	325.60	333.90	302.85	324.90	320.85	
2017	332.37	374.59	388.12	392.14	361.60	390.79	381.55	395.80	406.28	406.01	431.88	435.88	
2018	464.01	476.10	474.20	482.24	501.86	505.35	520.45						

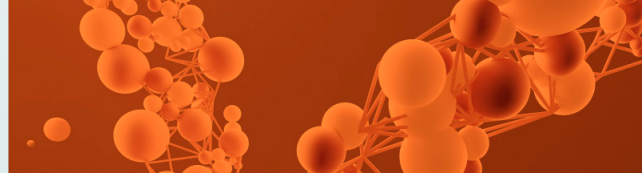
RC1 (SEK) PERFORMANCE %. NET OF FEES													
YEAR	JAN	FEB	MAR	APR	MAY	JUN	JUL	AUG	SEP	OCT	NOV	DEC	TOTAL
2009						-0.26	0.18	1.08	0.50	-4.72	5.30	4.81	6.75
2010	3.70	-2.39	6.52	-5.14	-11.44	-2.92	-4.45	-0.85	4.99	3.45	1.76	3.94	-4.30
2011	-3.18	1.32	1.58	3.42	5.47	-1.80	-1.84	-6.48	0.20	3.94	2.09	4.35	8.70
2012	6.96	0.08	4.14	1.02	0.59	3.83	-3.40	-0.25	4.61	-3.34	3.42	-2.32	15.76
2013	6.39	3.28	6.83	5.23	6.10	-1.91	10.57	-0.45	3.69	-2.23	10.09	-0.32	57.43
2014	6.55	5.09	-4.57	-4.59	5.92	5.57	1.17	6.91	1.78	8.71	3.86	5.66	49.70
2015	9.65	7.20	5.71	-5.16	9.89	-2.64	6.52	-10.27	-14.03	8.56	5.10	-2.22	15.58
2016	-17.44	-4.89	-1.29	4.41	8.24	-1.78	10.98	-2.63	2.55	-9.30	7.28	-1.25	-8.37
2017	3.59	12.70	3.61	1.04	-7.79	8.07	-2.36	3.73	2.65	-0.07	6.37	0.93	35.85
2018	6.45	2.61	-0.40	1.70	4.07	0.70	2.99						19.40

## NAV & PERFORMANCE DATA

RC2 (SEK) NAV													
YEAR	JAN	FEB	MAR	APR	MAY	JUN	JUL	AUG	SEP	OCT	NOV	DEC	
2009						99.74	99.98	101.12	101.68	96.94	102.10	107.07	
2010	111.07	108.57	115.69	109.78	97.28	94.47	90.31	89.58	94.10	97.38	99.14	103.08	
2011	99.84	101.20	102.84	106.40	112.28	110.30	108.32	101.33	101.58	105.64	107.89	112.63	
2012	120.30	120.44	125.51	126.83	127.66	132.58	128.13	127.86	133.77	129.36	133.84	130.80	
2013	139.17	143.74	153.48	161.57	171.53	167.92	185.74	185.04	192.06	187.86	206.87	206.39	
2014	219.98	231.28	221.05	210.98	223.54	236.05	238.90	255.47	260.24	283.00	293.97	310.92	
2015	341.02	365.80	386.77	366.96	403.34	392.85	418.61	375.87	323.26	351.09	369.14	361.10	
2016	298.25	283.80	280.26	292.73	317.00	311.48	345.83	336.89	345.62	313.62	336.59	332.52	
2017	344.62	388.54	402.06	406.34	374.90	405.23	395.81	410.70	421.71	421.61	448.59	452.80	
2018	482.21	495.26	493.58	502.12	522.72	526.43	542.35						

RC2 (SEK) PERFORMANCE %. NET OF FEES													
YEAR	JAN	FEB	MAR	APR	MAY	JUN	JUL	AUG	SEP	OCT	NOV	DEC	TOTAL
2009						-0.26	0.24	1.14	0.55	-4.66	5.32	4.87	7.07
2010	3.74	-2.25	6.56	-5.11	-11.39	-2.89	-4.40	-0.81	5.05	3.49	1.81	3.97	-3.73
2011	-3.14	1.36	1.62	3.46	5.53	-1.76	-1.80	-6.45	0.25	4.00	2.13	4.39	9.26
2012	6.81	0.12	4.21	1.05	0.65	3.85	-3.36	-0.21	4.62	-3.30	3.46	-2.27	16.13
2013	6.40	3.28	6.78	5.27	6.16	-2.10	10.61	-0.38	3.79	-2.19	10.12	-0.23	57.79
2014	6.58	5.14	-4.42	-4.56	5.95	5.60	1.21	6.94	1.87	8.75	3.88	5.77	50.65
2015	9.68	7.27	5.73	-5.12	9.91	-2.60	6.56	-10.21	-14.00	8.61	5.14	-2.18	16.14
2016	-17.41	-4.84	-1.25	4.45	8.29	-1.74	11.03	-2.59	2.59	-9.26	7.32	-1.21	-7.91
2017	3.64	12.74	3.48	1.06	-7.74	8.09	-2.32	3.76	2.68	-0.02	6.40	0.94	36.17
2018	6.50	2.71	-0.34	1.73	4.10	0.71	3.02						19.78





## ABOUT RHENMAN & PARTNERS

Rhenman & Partners Asset Management, founded in 2008, is a Stockholm-based investment manager focusing on two niche funds administered by SEB Fund Services S.A.: Rhenman Healthcare Equity L/S, founded in 2009, and Rhenman Global Opportunities L/S, founded in 2016. Assets under management amount to approximately EUR 600m. Investment Teams of both Funds are in their investment processes supported by renowned Advisory Boards, including professors and experts with many years of market experience and extensive networks around the world.

## Legal Disclaimer

Rhenman Healthcare Equity L/S. "The Fund" is not an investment fund as defined in the European Union directives relating to undertakings for collective investment in transferable securities (UCITS). Legal information regarding Fund is contained in the Prospectus and the KIID, available at Rhenman & Partners Asset Management AB (Rhenman & Partners) webpage: <http://rhepa.com/the-fund/prospectus/>.

This material has been prepared by Rhenman & Partners for professional and non-professional investors. Rhenman & Partners when preparing this information has not taken into account any one customer's particular investment objectives, financial resources or other relevant circumstances and the opinions and recommendations herein are not intended to represent recommendations of particular investments to particular customers. This material is for informational purposes only and should not be construed as an offer or solicitation to sell or buy units the Fund. Investors is strongly recommended to get professional advice as to whether investment in the Fund is appropriate having regard to their particular investment needs, objectives and financial circumstances, before investing.

All securities' transactions involve risks, which include (among others) the risk of adverse or unanticipated market, financial or political developments and, in international transactions, currency risk. There can be no assurance that an investment in the Fund will achieve profits or avoid incurring substantial losses. There is a high degree of risk inherent in investments and they may not be suitable for all eligible investors. It is possible that an investor may lose some or all of its investment. The past is not necessarily a guide to the future performance of an investment. The value of investments may fall as well as rise and investors may not get back the amount invested. Changes in rates of foreign exchange may cause the value of investments to go up or down.

Before making an investment decision, an investor and/or its adviser should (i) consider the suitability of investments in the Fund with respect to its investment objectives and personal situation and (ii) consider factors such as its personal net worth, income, age, risk tolerance and liquidity needs. Short-term investors and investors who cannot bear the loss of some or all of their investment or the risks associated with the limited liquidity of an investment should not invest.

Due care and attention has been used in the preparation of this information. However, actual results may vary from their forecasts, and any variation may be materially positive or negative. Forecasts, by their very nature, are subject to uncertainty and contingencies, many of which are outside the control of Rhenman & Partners. Rhenman & Partners cannot guarantee that the information contained herein is without fault or entirely accurate. There may be

delays, omissions or inaccuracies in the information. Any dated information is published as of its date only and no obligation or responsibility is undertaken to update or amend any such information.

The information in this material is based on sources that Rhenman & Partners believes to be reliable. Rhenman & Partners can however not guarantee that all information is correct. Furthermore, information and opinions may change without notice. Rhenman & Partners is under no obligation to make amendments or changes to this publication if errors are found or opinions or information change. Rhenman & Partners accepts no responsibility for the accuracy of its sources.

Rhenman & Partners is the owner of all works of authorship including, but not limited to, all design text, images and trademarks in this material unless otherwise explicitly stated. The use of Rhenman & Partners' material, works or trademarks is forbidden without written consent except where otherwise expressly stated. Furthermore, it is prohibited to publish material made or gathered by Rhenman & Partners without written consent.

By accessing and using the <http://rhepa.com/> website and any pages thereof, you acknowledge that you have reviewed the following important legal information and understand and agree to the terms and conditions set therein. If you do not agree to the terms and conditions in this disclaimer, do not access or use <http://rhepa.com/> website in any way.

Products and services described herein are not available to all persons in all geographical locations. Rhenman & Partner will not provide any such products or services to any person if the provision of such services could be in violation of law or regulation in such person's home country jurisdiction or any other related jurisdiction. The units of the Fund may not be offered or sold to or within the United States or in any other country where such offer or sale would conflict with applicable laws or regulations.

In no event, including (but not limited to) negligence, will Rhenman & Partner be liable to you or anyone else for any consequential, incidental, special or indirect damages (including but not limited to lost profits, trading losses and damages).

The sole legally binding basis for the purchase of shares of the Fund described in this information is the latest valid sales prospectus with its terms of contract. Subscriptions cannot be received on the basis of financial reports.

An investment in the Fund does not represent deposits or other liabilities of any member of the Rhenman & Partners Group. Neither Rhenman & Partners nor any member of the Rhenman & Partners Group and its affiliates guarantees in any way the performance of the Fund, repayment of capital from the Fund, any particular return from or any increase in the value of the Fund.

## Subscribe to our monthly newsletter at RHEPA.COM

### CONTACT DETAILS:

Rhenman & Partners  
Asset Management AB  
Strandvägen 5A  
114 51 Stockholm, Sweden  
Tel + 46 8 459 88 80  
[info@rhepa.com](mailto:info@rhepa.com)

### SWEDISH INVESTORS:

Anders Grelsson  
Swedish Investor Relations  
Mob + 46 70 374 43 20  
[anders@rhepa.com](mailto:anders@rhepa.com)

### INTERNATIONAL INVESTORS (NON SWEDISH):

Carl Grevelius  
Head of Investor Relations  
Tel + 46 8 459 88 83  
[carl@rhepa.com](mailto:carl@rhepa.com)

