



RHENMAN HEALTHCARE EQUITY L/S

August 2018

IC1 (EUR)	RC1 (SEK)	YTD
+6.86%	+9.70%	
IC1 (EUR)	RC1 (SEK)	
+23.41%	+30.98%	

- Annualised return of 22% (net) since inception.
- Over 20 years managing successful healthcare funds.
- World renowned industry professionals each with over 30 years experience actively involved through the Scientific Advisory Board.

Monthly update

August, traditionally a volatile and lackluster trading month, showed solid performance this year. Despite some concerns, related to both the ongoing trade disputes and sharply falling currencies in Turkey and other emerging markets, the world index rose. Once again, however, the major changes in exchange rates played a major role for returns, not least for investors who use the (weak) Swedish krona as their base currency.

The somewhat unexpected higher risk willingness was mainly due to strong second-quarter reports, especially in the United States, where large corporate buybacks boosted performance. The leading US indices, S&P 500 and NASDAQ, accounted for the biggest gains while a number of developing countries and Europe as a whole declined.

The ongoing conflict between the United States and Turkey, based on several complicated issues, brought the weak Turkish economy into sharp focus. The Turkish lira weakened, putting the spotlight on the Turkish banking system's massive borrowing in foreign currencies. This in turn created concerns about adverse spillover effects to continental European banks. Although the spillover effects are likely to be highly limited, concerns were fuelled about the negative view of Europe in general and its banks in particular. Other countries in a similar situation were also affected, not least in Latin America, where both the Brazilian real and the Argentinian peso plummeted to new lows.

Negotiations on trade agreements between the United States and various other countries developed in different directions during the month. The United States and Mexico announced a new agreement that will replace NAFTA, putting pressure on Canada to follow suit. Shortly after, President Trump rejected a proposal from the European Commission to abolish the reciprocal auto tariffs on the grounds that it would not influence consumer behavior (in favor of the U.S.), and threatened to leave the World Trade Organization.

Overall, the world index rose 1.5 percent in August, measured in euro. Looking at individual sectors, technology stocks emerged as the clear leader, followed by healthcare and consumer discretionary. The energy and raw materials sectors were the worst performers.

FUND PERFORMANCE

Measured in its main share class IC1 (EUR), the fund rose by 6.9 percent. The month was marked by broad gains for all subsectors: biotechnology, pharmaceuticals, and medical technology and services, which was the subsector that delivered the highest returns. The broad healthcare index (MSCI HC), rose by 3.9 percent while biotech index (NBI) rose 5.8 percent.

The month's best contributors for the fund were Glaukos and Nektar Therapeutics. The worst contributors were

Continued on the next page →

Spark Therapeutics and Portola Pharmaceuticals.

Glaukos is a US medical technology company specializing in eye diseases. The company has developed a minimally invasive technology for the treatment of glaucoma, a condition in which pressure in the eye is usually too high. With its product iStent, Glaukos offers an alternative to treatment with eye drops which often has sub-optimal efficacy because of poor compliance. In 2017, Novartis subsidiary Alcon launched a competing product, CyPass, whose entry into the market has hampered growth for iStent in the past year. However, at the end of August, Alcon announced that it would withdraw CyPass from all markets following the results of a study that showed an unfavorable safety profile for the product. Glaukos' share price soared on the news that its main competitor, at least temporarily, was being removed from the market.

US biotech company Nektar has shown a highly volatile share price development so far this year. After the price dive that followed the non-conclusive data presented at the major cancer conference ASCO in early June, the stock slowly but surely recovered during the summer. The company has confirmed that, together with its partner Bristol-Myers Squibb, it will present additional data from melanoma studies in November later this year; a news event that is likely to have contributed to greater expectations among investors.

Spark is a US biotechnology company specialized in developing gene therapies. In August, the company presented updated data for its drug candidate SPK-0811 which is being evaluated for the treatment of and as a possible cure for hemophilia A, a common form of hemophilia. In a phase I/II trial, two out of seven patients developed immune reactions to the drug, which lowered the drug's efficacy. Company management is convinced that such reactions can be prevented with prophylactic anti-inflammatory treatment and plans to start a phase III trial later this year. The share price initially fell sharply after the company presented its updated data, but partly recovered during the period.

Portola is a US biotechnology company specialized in thrombosis and hematological diseases. The company launched Bevyxxa, a factor Xa inhibitor, on the US market earlier this year, although European authorities have called

for additional clinical data. Sales of Bevyxxa in the second quarter did not meet market expectations, and the company has now lowered its sales outlook because it has proved more difficult than expected to gain rapid acceptance of the product with treating physicians. Lower forecasts for Bevyxxa resulted in a negative share price reaction.

OUTLOOK

August proved to be an unexpectedly strong month, given the surprisingly strong setback in the second half in July. Earnings reports were generally good, but the positive reaction came only after all speculators, who tend to take time off in August, had sold off most of their short-term holdings. The complexity and baffling processes of the trade conflicts certainly provided many reasons to buy into precisely those sectors that would be least affected by a full-scale trade war. Healthcare is considered to be one of these sectors. We believe that the market's assessment will remain relevant, since the trade disputes are likely to linger throughout the fall and long after US elections.

We see growing interest in the healthcare sector resulting from the Trump administration's initiative in the drug price issue. The Democrats, on the other hand, seem to have shifted the emphasis back to general healthcare issues, one of which being how the Affordable Care Act reform should be improved. The word "Obamacare" is, moreover, becoming less used in the debate because it is considered to have too uncertain support, and is underfunded and often regarded as too controversial. A renewed effort by Congress must therefore begin after the elections. The Senate will most likely have a continued Republican majority, despite the fact that the House of Representatives will probably be dominated by the Democrats. Going forward, the healthcare sector will probably continue to "climb a wall of worry," meaning that, in all probability, it will slowly continue to strengthen despite concerns and issues that might temporarily create minor setbacks. A P/E ratio of just over 17.5 for the healthcare sector can be considered attractive, compared with a historical average of roughly 19.5. A continued P/E expansion assumes, however, that the macro environment remains favorable.

Fund characteristics

KIID AND PROSPECTUS (WEBPAGE)

<http://fundinfo.sebfundservices.lu/RhenmanPartnersFund/>

INVESTABLE CURRENCIES

Euro (EUR) / Swedish Krona (SEK) / US Dollar (USD)

TARGET FUND SIZE

EUR 1bn (hard close)

RETURN TARGET

Annualised net returns in excess of 12% over time

LEGAL STRUCTURE

AIF / FCP (Fonds Commun de Placement) under Part II of the Luxembourg Law on Investment Funds

PORTFOLIO MANAGER

Rhenman & Partners Asset Management AB

INVESTMENT TEAM

Henrik Rhenman & Susanna Urdmark

AIFM / MANAGEMENT COMPANY

SEB Fund Services S.A.

PRIME BROKER

Skandinaviska Enskilda Banken AB (publ)

DEPOSITARY AND PAYING AGENT

Skandinaviska Enskilda Banken S.A.

AUDITOR

PricewaterhouseCoopers (PwC)

SUBSCRIPTION/REDEMPTION

Monthly

MINIMUM TOP UP

No minimum

NOTICE PERIOD

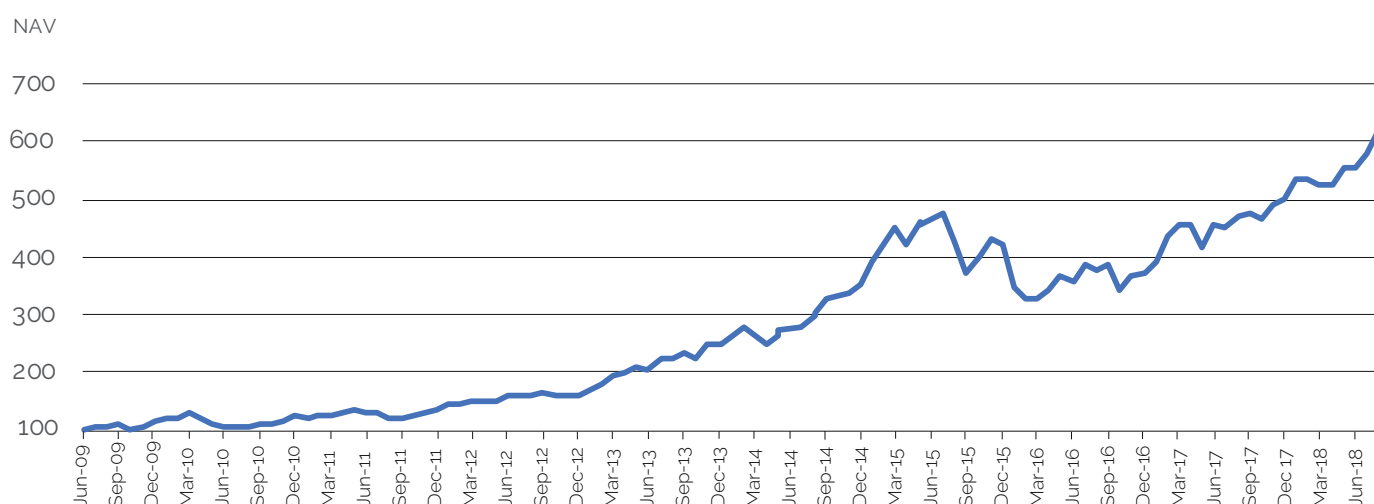
3 working days

HURDLE RATE

Euribor 90D (high-water mark)

+22%
annualised return since inception

FUND PERFORMANCE - IC1 (EUR)

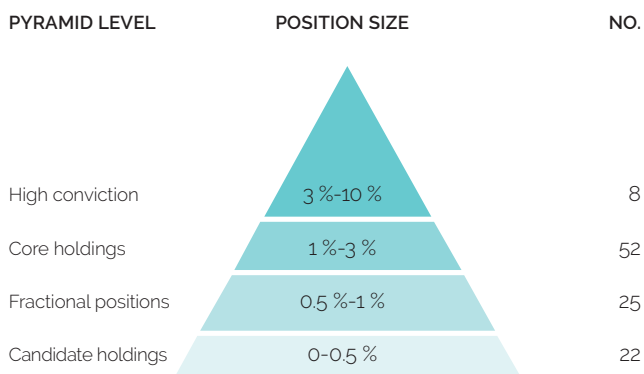


AUGUST 2018

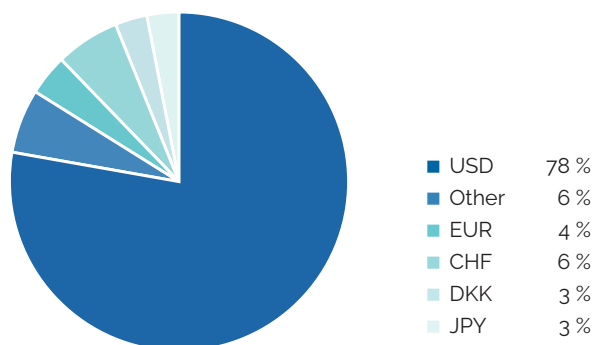
SHARE CLASS	NAV ¹	MONTHLY RETURN ¹	YTD 2018 ¹	SINCE INCEPTION ¹
IC1 (EUR)	618.36	6.86%	23.41%	518.36%
IC3 (EUR)	728.69	7.74%	26.64%	628.69%
IC2 (SEK)	469.65	9.79%	31.80%	369.65%
ID1 (SEK)	359.38	9.75%	24.17%	259.38%
IC1 (USD)	161.13	6.39%	20.30%	61.13%
IC2 (USD)	217.39	6.42%	20.69%	117.39%
RC1 (EUR)	540.96	6.82%	23.08%	440.96%
RC1 (SEK)	570.92	9.70%	30.98%	470.92%
RC2 (SEK)	595.22	9.75%	31.45%	495.22%
3 mån Euribor (EUR)	103.16	0.00%	-0.11%	3.16%

Note: 1) Please find launch date information on page 5-8.

PORTFOLIO CONSTRUCTION²



CURRENCY EXPOSURE³



RISK (IC1 EUR)

Value at risk ⁵	1.61 %
Standard Deviation ⁶	19.73 %
Sharpe Ratio ⁶	1.10

EXPOSURE⁴

Long	147 %
Short	21 %
Gross	168 %
Net	126 %

AUM⁷

Fund:	
EUR	714m
USD	831m
Total: EUR	724m

LARGEST LONG POSITIONS

1 Novartis AG Reg
2 CVS Health Corp
3 Alexion Pharmaceuticals Inc
4 Cigna Corp
5 Incyte Corp Ltd

SHARE CLASS CHARACTERISTICS – INSTITUTIONAL SHARE CLASSES – ONLY INSTITUTIONAL INVESTORS⁸

MINIMUM INVESTMENT		MGT. FEE	PERF. FEE	ISIN NO.	BLOOMBERG TICKER	LIPPER REUTERS	TELEKURS
IC1 (EUR)	250 000	1.50 %	20 %	LU0417598108	RHLEIC1 LX	65147588	10034579
IC3 (EUR)	5 000 000	1.50 %	10 %	LU0434614789	RHHIC3 LX	68014068	10283697
IC2 (SEK)	50 000 000	1.00 %	20 %	LU0417598793	RHHIC2S LX	68204997	20323930
ID1 (SEK)	100 000	1.50 %	20 %	LU0417599098	RHHIC1D1 LX	68153820	18491109
IC1 (USD)	300 000	1.50 %	20 %	LU0417598280	RHUI1A LX	68305812	26812813
IC2 (USD)	6 000 000	1.00 %	20 %	LU0417598520	RHUI2U LX	68265724	24456000

SHARE CLASS CHARACTERISTICS – RETAIL SHARE CLASSES – ALSO OPEN TO INSTITUTIONAL INVESTORS⁸

MINIMUM INVESTMENT		MGT. FEE	PERF. FEE	ISIN NO.	BLOOMBERG TICKER	LIPPER REUTERS	TELEKURS
RC1 (EUR)	2 500	2.00 %	20 %	LU0417597555	RHLERC1 LX	65147589	10034567
RC1 (SEK)	500	2.00 %	20 %	LU0417597712	RHLSRC1 LX	68014067	10239523
RC2 (SEK)	2 500 000	1.50 %	20 %	LU0417598017	RHLSRC2 LX	68015239	10239528

Notes: 2) As a percentage of the market value of the long and short positions (excluding cash positions). 3) Number of long equity positions (excluding any ETFs). 4) The exposure is adjusted for net fund flow at month end. 5) For holdings at month end (95 % conf. int. 250 days history). 6) Standard deviation and Sharpe ratio are annualized. 7) The AUM is adjusted for net fund flow at month end. 8) Administrative fees are charged in addition to the fees above. Further information is available in the KIID as well as the prospectus (part B. A14-18).

NAV & PERFORMANCE DATA

IC1 (EUR) NAV													
YEAR	JAN	FEB	MAR	APR	MAY	JUN	JUL	AUG	SEP	OCT	NOV	DEC	
2009						100.75	105.19	107.47	107.83	100.99	105.70	113.28	
2010	117.91	119.94	127.53	122.31	108.73	106.40	102.84	102.63	109.95	112.16	116.17	122.73	
2011	121.53	124.28	123.35	127.79	134.24	129.26	128.19	119.36	118.28	125.67	127.48	134.59	
2012	142.42	143.99	149.51	150.29	150.07	159.07	160.74	160.74	165.47	156.93	161.34	158.92	
2013	168.92	178.11	191.91	198.41	209.10	202.53	225.87	223.66	233.45	225.66	246.67	246.79	
2014	263.91	277.13	262.34	247.80	260.99	274.87	276.25	296.82	304.03	326.16	338.66	352.48	
2015	391.34	419.34	448.65	421.01	463.44	456.29	476.60	424.39	370.76	401.72	430.21	423.32	
2016	345.01	326.39	325.66	342.05	366.15	355.48	389.06	378.89	385.50	340.52	369.37	372.46	
2017	391.88	436.08	454.95	456.28	415.30	455.96	449.05	468.44	473.40	468.37	491.88	501.07	
2018	535.61	535.64	525.88	523.61	556.39	554.68	578.66	618.36					

IC1 (EUR) PERFORMANCE %. NET OF FEES													
YEAR	JAN	FEB	MAR	APR	MAY	JUN	JUL	AUG	SEP	OCT	NOV	DEC	TOTAL
2009						0.75	4.41	2.17	0.33	-6.34	4.66	7.17	13.28
2010	4.09	1.72	6.33	-4.09	-11.10	-2.14	-3.35	-0.20	7.13	2.01	3.58	5.65	8.34
2011	-0.98	2.26	-0.75	3.60	5.05	-3.71	-0.83	-6.89	-0.90	6.25	1.44	5.58	9.66
2012	5.82	1.10	3.83	0.52	-0.15	6.00	1.05	0.00	2.94	-5.16	2.81	-1.50	18.08
2013	6.29	5.44	7.75	3.39	5.39	-3.14	11.52	-0.98	4.38	-3.34	9.31	0.05	55.29
2014	6.94	5.01	-5.34	-5.54	5.32	5.32	0.50	7.45	2.43	7.28	3.83	4.08	42.83
2015	11.02	7.15	6.99	-6.16	10.08	-1.54	4.45	-10.95	-12.64	8.35	7.09	-1.60	20.10
2016	-18.50	-5.40	-0.22	5.03	7.05	-2.91	9.45	-2.61	1.74	-11.67	8.47	0.84	-12.01
2017	5.21	11.28	4.33	0.29	-8.98	9.79	-1.52	4.32	1.06	-1.06	5.02	1.87	34.53
2018	6.89	0.01	-1.82	-0.43	6.26	-0.31	4.32	6.86					23.41

IC2 (SEK) NAV													
YEAR	JAN	FEB	MAR	APR	MAY	JUN	JUL	AUG	SEP	OCT	NOV	DEC	
2013	105.95	109.53	117.11	123.34	131.02	128.83	142.56	142.09	147.55	144.39	159.03	158.77	
2014	169.27	178.14	170.53	162.83	172.56	182.30	184.56	197.44	201.10	218.77	227.47	240.91	
2015	264.32	283.76	300.86	285.57	313.96	305.90	326.08	292.97	252.07	273.89	288.10	281.94	
2016	232.96	221.76	219.09	228.93	248.02	243.80	270.79	263.91	270.85	245.87	263.97	260.88	
2017	270.49	305.07	315.32	318.79	294.29	318.16	310.91	322.70	331.45	331.49	352.83	356.33	
2018	379.63	389.78	388.65	395.52	411.90	415.07	427.79	469.65					

IC2 (SEK) PERFORMANCE %. NET OF FEES													
YEAR	JAN	FEB	MAR	APR	MAY	JUN	JUL	AUG	SEP	OCT	NOV	DEC	TOTAL
2013	5.95	3.38	6.92	5.32	6.23	-1.67	10.66	-0.33	3.84	-2.14	10.14	-0.16	58.77
2014	6.61	5.24	-4.27	-4.52	5.98	5.64	1.24	6.98	1.85	8.79	3.98	5.91	51.74
2015	9.72	7.35	6.03	-5.08	9.94	-2.57	6.60	-10.15	-13.96	8.66	5.19	-2.14	17.03
2016	-17.37	-4.81	-1.20	4.49	8.34	-1.70	11.07	-2.54	2.63	-9.22	7.36	-1.17	-7.47
2017	3.68	12.78	3.36	1.10	-7.69	8.11	-2.28	3.79	2.71	0.01	6.44	0.99	36.59
2018	6.54	2.67	-0.29	1.77	4.14	0.77	3.06	9.79					31.80

IC1 (USD) NAV													
YEAR	JAN	FEB	MAR	APR	MAY	JUN	JUL	AUG	SEP	OCT	NOV	DEC	
2015		106.43	109.37	107.12	114.84	114.48	118.78	107.70	93.74	100.50	102.88	104.09	
2016	84.51	80.27	84.02	88.68	92.24	89.25	98.50	95.48	98.04	84.48	88.63	88.85	
2017	95.78	104.78	110.08	112.50	105.65	116.97	118.72	124.26	125.01	121.84	130.74	133.94	
2018	147.42	145.05	143.28	140.20	145.38	144.95	151.45	161.13					

IC1 (USD) PERFORMANCE %. NET OF FEES													
YEAR	JAN	FEB	MAR	APR	MAY	JUN	JUL	AUG	SEP	OCT	NOV	DEC	TOTAL
2015		6.43	2.76	-2.06	7.21	-0.31	3.76	-9.33	-12.96	7.21	2.37	1.18	4.09
2016	-18.81	-5.02	4.67	5.55	4.01	-3.24	10.36	-3.07	2.68	-13.83	4.91	0.25	-14.64
2017	7.80	9.40	5.06	2.20	-6.09	10.71	1.50	4.67	0.60	-2.54	7.30	2.45	50.75
2018	10.06	-1.61	-1.22	-2.15	3.69	-0.30	4.48	6.39					20.30

NAV & PERFORMANCE DATA

IC2 (USD) NAV													
YEAR	JAN	FEB	MAR	APR	MAY	JUN	JUL	AUG	SEP	OCT	NOV	DEC	
2014					102.92	108.60	106.82	113.71	112.69	120.10	124.21	126.40	
2015	132.75	141.32	145.96	143.02	153.38	152.95	158.76	143.26	124.74	133.79	137.03	138.70	
2016	112.66	107.07	112.12	118.40	123.21	119.27	131.69	127.71	131.20	113.12	118.73	119.08	
2017	128.42	140.54	147.72	151.02	141.89	156.98	159.38	166.89	167.94	163.77	175.76	180.12	
2018	198.33	195.19	192.99	188.92	195.95	195.44	204.27	217.39					

IC2 (USD) PERFORMANCE %. NET OF FEES													
YEAR	JAN	FEB	MAR	APR	MAY	JUN	JUL	AUG	SEP	OCT	NOV	DEC	TOTAL
2014					2.92	5.52	-1.64	6.45	-0.90	6.58	3.42	1.76	26.40
2015	5.02	6.46	3.28	-2.01	7.24	-0.28	3.80	-9.76	-12.93	7.26	2.42	1.22	9.73
2016	-18.77	-4.96	4.72	5.60	4.06	-3.20	10.41	-3.02	2.73	-13.78	4.96	0.29	-14.15
2017	7.84	9.44	5.11	2.23	-6.05	10.63	1.53	4.71	0.63	-2.48	7.32	2.48	51.26
2018	10.11	-1.58	-1.13	-2.11	3.72	-0.26	4.52	6.42					20.69

IC3 (EUR) NAV													
YEAR	JAN	FEB	MAR	APR	MAY	JUN	JUL	AUG	SEP	OCT	NOV	DEC	
2009								102.15	103.33	96.78	101.30	109.19	
2010	114.20	116.43	124.73	119.62	106.33	104.06	100.57	100.37	107.52	109.68	113.59	120.00	
2011	118.82	121.50	120.59	124.92	131.89	126.43	125.36	116.73	115.66	122.76	124.53	132.03	
2012	140.67	142.42	148.58	149.43	149.16	159.24	161.09	161.06	166.38	157.79	162.21	159.79	
2013	170.25	180.70	196.39	203.85	216.23	208.50	235.66	233.03	244.50	236.34	260.09	260.40	
2014	280.76	296.58	279.47	263.97	278.02	294.48	296.09	321.00	329.83	356.89	372.31	389.50	
2015	437.99	471.80	508.68	477.10	527.32	518.14	544.00	481.68	420.82	455.95	488.29	480.47	
2016	391.59	370.46	369.62	388.23	415.58	403.47	441.58	430.05	437.55	386.50	419.24	422.75	
2017	444.79	494.96	516.44	518.14	471.42	517.72	509.84	533.67	539.99	534.17	563.68	575.38	
2018	620.04	620.31	607.45	604.83	647.20	644.96	676.32	728.69					

IC3 (EUR) PERFORMANCE %. NET OF FEES													
YEAR	JAN	FEB	MAR	APR	MAY	JUN	JUL	AUG	SEP	OCT	NOV	DEC	TOTAL
2009								2.15	1.16	-6.34	4.67	7.79	9.19
2010	4.59	1.95	7.13	-4.10	-11.11	-2.13	-3.35	-0.20	7.12	2.01	3.56	5.64	9.90
2011	-0.98	2.26	-0.75	3.59	5.58	-4.14	-0.85	-6.88	-0.92	6.14	1.44	6.02	10.03
2012	6.54	1.24	4.33	0.57	-0.18	6.76	1.16	-0.02	3.30	-5.16	2.80	-1.49	21.03
2013	6.55	6.14	8.68	3.80	6.07	-3.57	13.03	-1.12	4.92	-3.34	10.05	0.12	62.96
2014	7.82	5.63	-5.77	-5.55	5.32	5.92	0.55	8.41	2.75	8.20	4.32	4.62	49.58
2015	12.45	7.72	7.82	-6.21	10.53	-1.74	4.99	-11.46	-12.63	8.35	7.09	-1.60	23.36
2016	-18.50	-5.40	-0.23	5.03	7.04	-2.91	9.45	-2.61	1.74	-11.67	8.47	0.84	-12.01
2017	5.21	11.28	4.34	0.33	-9.02	9.82	-1.52	4.67	1.18	-1.08	5.52	2.08	36.10
2018	7.76	0.04	-2.07	-0.43	7.01	-0.35	4.86	7.74					26.64

ID1 (SEK) NAV													
YEAR	JAN	FEB	MAR	APR	MAY	JUN	JUL	AUG	SEP	OCT	NOV	DEC	
2012					100.64	104.51	101.00	100.77	105.42	101.93	105.47	103.07	
2013	109.66	109.21	116.69	122.83	130.33	127.88	141.46	140.87	146.24	143.04	157.52	157.19	
2014	167.54	168.39	161.54	154.18	163.36	172.51	174.59	186.71	190.10	206.73	214.90	227.49	
2015	249.52	256.41	271.30	257.41	282.93	275.68	293.76	263.61	226.72	246.24	258.91	253.27	
2016	209.19	186.39	184.08	192.27	208.21	204.58	227.14	221.28	227.01	205.99	221.08	218.41	
2017	226.36	247.58	257.17	259.92	239.81	259.22	253.21	262.73	269.78	269.72	287.00	289.42	
2018	308.23	298.96	297.90	303.06	315.52	317.84	327.46	359.38					

NAV & PERFORMANCE DATA

ID1 (SEK) PERFORMANCE %. NET OF FEES													
YEAR	JAN	FEB	MAR	APR	MAY	JUN	JUL	AUG	SEP	OCT	NOV	DEC	TOTAL
2012					0.64	3.85	-3.36	-0.23	4.61	-3.31	3.47	-2.28	3.07
2013	6.39	-0.41	6.85	5.26	6.11	-1.88	10.62	-0.42	3.81	-2.19	10.12	-0.21	52.51
2014	6.58	0.51	-4.07	-4.56	5.95	5.60	1.21	6.94	1.82	8.75	3.95	5.86	44.72
2015	9.68	2.76	5.81	-5.12	9.91	-2.56	6.56	-10.26	-13.99	8.61	5.15	-2.18	11.33
2016	-17.40	-10.90	-1.24	4.45	8.29	-1.74	11.03	-2.58	2.59	-9.26	7.33	-1.21	-13.76
2017	3.64	9.37	3.87	1.07	-7.74	8.09	-2.32	3.76	2.68	-0.02	6.41	0.84	32.51
2018	6.50	-3.01	-0.35	1.73	4.11	0.74	3.03	9.75					24.17

RC1 (EUR) NAV													
YEAR	JAN	FEB	MAR	APR	MAY	JUN	JUL	AUG	SEP	OCT	NOV	DEC	
2010									104.35	104.75	110.36	115.32	
2011	114.18	116.50	115.79	119.40	125.10	120.47	119.15	110.91	109.86	116.68	118.31	124.92	
2012	132.14	133.59	138.66	139.34	139.09	147.39	148.89	148.83	153.16	145.20	149.21	146.92	
2013	156.14	164.59	177.28	183.22	192.89	185.65	206.96	204.86	212.69	205.49	224.58	224.79	
2014	240.30	251.66	236.42	223.21	235.00	247.45	248.60	266.95	273.34	293.13	304.24	315.14	
2015	349.47	373.47	398.19	373.48	411.03	404.45	422.31	375.75	328.13	355.37	380.41	374.15	
2016	304.81	288.23	287.45	301.80	322.91	313.37	342.82	333.71	339.38	299.66	324.90	327.48	
2017	344.40	383.08	399.53	400.83	364.36	400.14	393.87	411.29	415.46	410.84	431.35	439.53	
2018	469.64	469.79	461.25	459.04	487.65	485.62	506.41	540.96					

RC1 (EUR) PERFORMANCE %. NET OF FEES													
YEAR	JAN	FEB	MAR	APR	MAY	JUN	JUL	AUG	SEP	OCT	NOV	DEC	TOTAL
2010									4.35	0.38	5.36	4.49	15.32
2011	-0.99	2.03	-0.61	3.12	4.77	-3.70	-1.10	-6.92	-0.95	6.21	1.40	5.59	8.32
2012	5.78	1.10	3.80	0.49	-0.18	5.97	1.02	-0.04	2.91	-5.20	2.76	-1.53	17.61
2013	6.28	5.41	7.71	3.35	5.28	-3.75	11.48	-1.01	3.82	-3.39	9.29	0.09	53.00
2014	6.90	4.73	-6.06	-5.59	5.28	5.30	0.46	7.38	2.39	7.24	3.80	3.58	40.19
2015	10.89	6.87	6.62	-6.21	10.05	-1.60	4.42	-11.03	-12.67	8.30	7.05	-1.65	18.73
2016	-18.53	-5.44	-0.27	4.99	6.99	-2.95	9.40	-2.66	1.70	-11.70	8.42	0.79	-12.47
2017	5.17	11.23	4.29	0.33	-9.10	9.82	-1.57	4.42	1.01	-1.11	4.99	1.90	34.22
2018	6.85	0.03	-1.82	-0.48	6.23	-0.42	4.28	6.82					23.08

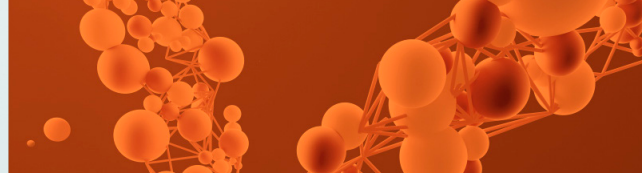
RC1 (SEK) NAV													
YEAR	JAN	FEB	MAR	APR	MAY	JUN	JUL	AUG	SEP	OCT	NOV	DEC	
2009						99.74	99.92	101.00	101.51	96.72	101.85	106.75	
2010	110.70	108.05	115.09	109.18	96.69	93.87	89.69	88.93	93.37	96.59	98.29	102.16	
2011	98.91	100.22	101.80	105.28	111.04	109.04	107.03	100.09	100.29	104.24	106.42	111.05	
2012	118.78	118.87	123.79	125.05	125.79	130.61	126.17	125.85	131.65	127.25	131.60	128.55	
2013	136.76	141.24	150.89	158.78	168.47	165.25	182.72	181.89	188.61	184.41	203.02	202.38	
2014	215.63	226.61	216.26	206.33	218.55	230.73	233.43	249.55	253.98	276.09	286.74	302.97	
2015	332.20	356.11	376.45	357.02	392.32	381.98	406.89	365.09	313.86	340.74	358.11	350.16	
2016	289.10	274.97	271.43	283.40	306.76	301.29	334.38	325.60	333.90	302.85	324.90	320.85	
2017	332.37	374.59	388.12	392.14	361.60	390.79	381.55	395.80	406.28	406.01	431.88	435.88	
2018	464.01	476.10	474.20	482.24	501.86	505.35	520.45	570.92					

RC1 (SEK) PERFORMANCE %. NET OF FEES													
YEAR	JAN	FEB	MAR	APR	MAY	JUN	JUL	AUG	SEP	OCT	NOV	DEC	TOTAL
2009						-0.26	0.18	1.08	0.50	-4.72	5.30	4.81	6.75
2010	3.70	-2.39	6.52	-5.14	-11.44	-2.92	-4.45	-0.85	4.99	3.45	1.76	3.94	-4.30
2011	-3.18	1.32	1.58	3.42	5.47	-1.80	-1.84	-6.48	0.20	3.94	2.09	4.35	8.70
2012	6.96	0.08	4.14	1.02	0.59	3.83	-3.40	-0.25	4.61	-3.34	3.42	-2.32	15.76
2013	6.39	3.28	6.83	5.23	6.10	-1.91	10.57	-0.45	3.69	-2.23	10.09	-0.32	57.43
2014	6.55	5.09	-4.57	-4.59	5.92	5.57	1.17	6.91	1.78	8.71	3.86	5.66	49.70
2015	9.65	7.20	5.71	-5.16	9.89	-2.64	6.52	-10.27	-14.03	8.56	5.10	-2.22	15.58
2016	-17.44	-4.89	-1.29	4.41	8.24	-1.78	10.98	-2.63	2.55	-9.30	7.28	-1.25	-8.37
2017	3.59	12.70	3.61	1.04	-7.79	8.07	-2.36	3.73	2.65	-0.07	6.37	0.93	35.85
2018	6.45	2.61	-0.40	1.70	4.07	0.70	2.99	9.70					30.98

NAV & PERFORMANCE DATA

RC2 (SEK) NAV													
YEAR	JAN	FEB	MAR	APR	MAY	JUN	JUL	AUG	SEP	OCT	NOV	DEC	
2009						99.74	99.98	101.12	101.68	96.94	102.10	107.07	
2010	111.07	108.57	115.69	109.78	97.28	94.47	90.31	89.58	94.10	97.38	99.14	103.08	
2011	99.84	101.20	102.84	106.40	112.28	110.30	108.32	101.33	101.58	105.64	107.89	112.63	
2012	120.30	120.44	125.51	126.83	127.66	132.58	128.13	127.86	133.77	129.36	133.84	130.80	
2013	139.17	143.74	153.48	161.57	171.53	167.92	185.74	185.04	192.06	187.86	206.87	206.39	
2014	219.98	231.28	221.05	210.98	223.54	236.05	238.90	255.47	260.24	283.00	293.97	310.92	
2015	341.02	365.80	386.77	366.96	403.34	392.85	418.61	375.87	323.26	351.09	369.14	361.10	
2016	298.25	283.80	280.26	292.73	317.00	311.48	345.83	336.89	345.62	313.62	336.59	332.52	
2017	344.62	388.54	402.06	406.34	374.90	405.23	395.81	410.70	421.71	421.61	448.59	452.80	
2018	482.21	495.26	493.58	502.12	522.72	526.43	542.35	595.22					

RC2 (SEK) PERFORMANCE %. NET OF FEES													
YEAR	JAN	FEB	MAR	APR	MAY	JUN	JUL	AUG	SEP	OCT	NOV	DEC	TOTAL
2009						-0.26	0.24	1.14	0.55	-4.66	5.32	4.87	7.07
2010	3.74	-2.25	6.56	-5.11	-11.39	-2.89	-4.40	-0.81	5.05	3.49	1.81	3.97	-3.73
2011	-3.14	1.36	1.62	3.46	5.53	-1.76	-1.80	-6.45	0.25	4.00	2.13	4.39	9.26
2012	6.81	0.12	4.21	1.05	0.65	3.85	-3.36	-0.21	4.62	-3.30	3.46	-2.27	16.13
2013	6.40	3.28	6.78	5.27	6.16	-2.10	10.61	-0.38	3.79	-2.19	10.12	-0.23	57.79
2014	6.58	5.14	-4.42	-4.56	5.95	5.60	1.21	6.94	1.87	8.75	3.88	5.77	50.65
2015	9.68	7.27	5.73	-5.12	9.91	-2.60	6.56	-10.21	-14.00	8.61	5.14	-2.18	16.14
2016	-17.41	-4.84	-1.25	4.45	8.29	-1.74	11.03	-2.59	2.59	-9.26	7.32	-1.21	-7.91
2017	3.64	12.74	3.48	1.06	-7.74	8.09	-2.32	3.76	2.68	-0.02	6.40	0.94	36.17
2018	6.50	2.71	-0.34	1.73	4.10	0.71	3.02	9.75					31.45



ABOUT RHENMAN & PARTNERS

Rhenman & Partners Asset Management, founded in 2008, is a Stockholm-based investment manager focusing on two niche funds administered by SEB Fund Services S.A.: Rhenman Healthcare Equity L/S, founded in 2009, and Rhenman Global Opportunities L/S, founded in 2016. Assets under management amount to approximately EUR 700m. Investment Teams of both Funds are in their investment processes supported by renowned Advisory Boards, including professors and experts with many years of market experience and extensive networks around the world.

Legal Disclaimer

Rhenman Healthcare Equity L/S. "The Fund" is not an investment fund as defined in the European Union directives relating to undertakings for collective investment in transferable securities (UCITS). Legal information regarding Fund is contained in the Prospectus and the KIID, available at Rhenman & Partners Asset Management AB (Rhenman & Partners) webpage: <http://rhepa.com/the-fund/prospectus/>.

This material has been prepared by Rhenman & Partners for professional and non-professional investors. Rhenman & Partners when preparing this information has not taken into account any one customer's particular investment objectives, financial resources or other relevant circumstances and the opinions and recommendations herein are not intended to represent recommendations of particular investments to particular customers. This material is for informational purposes only and should not be construed as an offer or solicitation to sell or buy units the Fund. Investors is strongly recommended to get professional advice as to whether investment in the Fund is appropriate having regard to their particular investment needs, objectives and financial circumstances, before investing.

All securities' transactions involve risks, which include (among others) the risk of adverse or unanticipated market, financial or political developments and, in international transactions, currency risk. There can be no assurance that an investment in the Fund will achieve profits or avoid incurring substantial losses. There is a high degree of risk inherent in investments and they may not be suitable for all eligible investors. It is possible that an investor may lose some or all of its investment. The past is not necessarily a guide to the future performance of an investment. The value of investments may fall as well as rise and investors may not get back the amount invested. Changes in rates of foreign exchange may cause the value of investments to go up or down.

Before making an investment decision, an investor and/or its adviser should (i) consider the suitability of investments in the Fund with respect to its investment objectives and personal situation and (ii) consider factors such as its personal net worth, income, age, risk tolerance and liquidity needs. Short-term investors and investors who cannot bear the loss of some or all of their investment or the risks associated with the limited liquidity of an investment should not invest.

Due care and attention has been used in the preparation of this information. However, actual results may vary from their forecasts, and any variation may be materially positive or negative. Forecasts, by their very nature, are subject to uncertainty and contingencies, many of which are outside the control of Rhenman & Partners. Rhenman & Partners cannot guarantee that the information contained herein is without fault or entirely accurate. There may be

delays, omissions or inaccuracies in the information. Any dated information is published as of its date only and no obligation or responsibility is undertaken to update or amend any such information.

The information in this material is based on sources that Rhenman & Partners believes to be reliable. Rhenman & Partners can however not guarantee that all information is correct. Furthermore, information and opinions may change without notice. Rhenman & Partners is under no obligation to make amendments or changes to this publication if errors are found or opinions or information change. Rhenman & Partners accepts no responsibility for the accuracy of its sources.

Rhenman & Partners is the owner of all works of authorship including, but not limited to, all design text, images and trademarks in this material unless otherwise explicitly stated. The use of Rhenman & Partners' material, works or trademarks is forbidden without written consent except where otherwise expressly stated. Furthermore, it is prohibited to publish material made or gathered by Rhenman & Partners without written consent.

By accessing and using the <http://rhepa.com/> website and any pages thereof, you acknowledge that you have reviewed the following important legal information and understand and agree to the terms and conditions set therein. If you do not agree to the terms and conditions in this disclaimer, do not access or use <http://rhepa.com/> website in any way.

Products and services described herein are not available to all persons in all geographical locations. Rhenman & Partner will not provide any such products or services to any person if the provision of such services could be in violation of law or regulation in such person's home country jurisdiction or any other related jurisdiction. The units of the Fund may not be offered or sold to or within the United States or in any other country where such offer or sale would conflict with applicable laws or regulations.

In no event, including (but not limited to) negligence, will Rhenman & Partner be liable to you or anyone else for any consequential, incidental, special or indirect damages (including but not limited to lost profits, trading losses and damages).

The sole legally binding basis for the purchase of shares of the Fund described in this information is the latest valid sales prospectus with its terms of contract. Subscriptions cannot be received on the basis of financial reports.

An investment in the Fund does not represent deposits or other liabilities of any member of the Rhenman & Partners Group. Neither Rhenman & Partners nor any member of the Rhenman & Partners Group and its affiliates guarantees in any way the performance of the Fund, repayment of capital from the Fund, any particular return from or any increase in the value of the Fund.

Subscribe to our monthly newsletter at RHEPA.COM

CONTACT DETAILS:

Rhenman & Partners
Asset Management AB
Strandvägen 5A
114 51 Stockholm, Sweden
Tel + 46 8 459 88 80
info@rhepa.com

SWEDISH INVESTORS:

Anders Grelsson
Swedish Investor Relations
Mob + 46 70 374 43 20
anders@rhepa.com

INTERNATIONAL INVESTORS (NON SWEDISH):

Carl Grevelius
Head of Investor Relations
Tel + 46 8 459 88 83
carl@rhepa.com

