



RHENMAN HEALTHCARE EQUITY L/S

December 2018

IC1 (EUR)	RC1 (SEK)	YTD
-16.68%	-18.06%	
IC1 (EUR)	RC1 (SEK)	
-5.14%	-3.55%	

- Annualised return of 18% (net) since inception.
- Over 20 years managing successful healthcare funds.
- World renowned industry professionals each with over 30 years experience actively involved through the Scientific Advisory Board.

Monthly update

Annus horribilis. That's how most investors will remember the horrible year of 2018, which proved to be the worst year for equity markets since the 2008 financial crisis. Despite a strong start on the first trading day in December, after what was considered to be progress on the trade war between the United States and China following the G20 summit in Argentina, markets plunged for the rest of the month. Overall, it turned into the worst December since the Second World War!

All risk assets (such as equities, corporate bonds and oil) fell sharply, while secured assets (primarily US government bonds) noted the largest inflows in 20 years.

Although the cause of the significant downturn is unclear, much points to investors' concern over the risks of a sharp slowdown in global growth and thus substantially weaker corporate earnings in 2019.

The list of concerns is long, and includes the negative effects of introducing new tariffs, slowdowns in China, widespread political unrest in Europe, interest rate hikes in the United States and more. Other political events, such as the resignation of US Secretary of Defense Jim Mattis, also spooked investors.

Overall the world index fell more than 8 percent in December, measured in euros. All subsectors and regions fell. In terms of sectors, energy, banks and industrial companies fell the most while utilities and other commodities fell less than the market as a whole.

FUND PERFORMANCE

The fund fell 16.7 percent measured in its main share class, IC1 (EUR), and 18.1 percent measured in its RC1 class (SEK). The major underperformance in December wiped out the positive returns the

fund had gained during the year up to the end of November. The fund decreased 5.1 percent in 2018, measured in IC1 (EUR), and 3.6 percent measured in RC1 (SEK).

After a strong performance for the sector up to the end of November, where returns on medical technology were highest, followed by services, December was marked by downturns in all subsectors. Measured in euros, a broad healthcare index (MSCI HC) fell 9.2 percent. Services proved to be the worst subsector with a decline of 13.7 percent. The biotech index NBI fell 12.3 percent, with major biotech companies managing better than small and medium-sized companies. Pharmaceuticals and medical technology dropped 8.8 and 7.7 percent respectively. For the full year 2018, the MSCI HC finished up 7.6 percent, whereas the NBI was the worst subsector finishing down 4.8 percent.

The month's best contributors for the fund were Genmab and FibroGen. The worst contributors were CVS Health and Alexion Pharmaceuticals.

Genmab is a Danish biotech company specialized in cancer therapies. The company's key asset is its approved drug Darzalex for the treatment of multiple myeloma. Positive results from a clinical study presented at a cancer conference early in the month resulted in a relatively strong development of Genmab's share price in December.

FibroGen is a US biotech company. The company's drug candidate roxadustat is an oral treatment for anemia that has the potential to replace treatment using recombinant erythropoietin in patients with chronic kidney disease. During December, two events affected the share price: positive results were presented from a phase 3 trial, and the company's partner AstraZeneca received approval for roxadustat in China. Together, these two events led to strong share

Continued on the next page →

price performance.

CVS Health will become one of the largest companies in the services sector following its acquisition of health insurance company Aetna in November 2018. The company's share price dropped in line with the market in early December. However, the share price decline accelerated when a Texas judge unexpectedly struck down the healthcare reform that President Obama had introduced in 2010 – a reform which encouraged more Americans to get healthcare coverage and thus gain access to better care. The ruling has been appealed to the Supreme Court and many of us expect the decision to be overturned.

Alexion Pharmaceuticals is a US biotech company specializing in rare diseases. The company's share price fell sharply in line with the broader biotech sector during the first part of the month. However, its share price recovered somewhat at the end of December when the company's product Ultomiris (ALXN1210) was approved by the FDA two months earlier than expected.

THE DECLINE AND OUTLOOK

Following one of the worst-ever December months and a decline for the fund that was nearly as powerful and dramatic as in January 2016 (when Trump tweeted that the pharmaceutical industry "gets away with murder"), we would like to shed some light on the background leading up to the decline, as well as discuss its causes and the factors specifically affecting the second biggest monthly downturn in the fund's history.

From a historical perspective, this was one of the worst declines we have experienced, partly because it occurred during a month that rarely sees such large downturns (December is one of the seasonally stronger months). The decline was most likely triggered by a confluence of several economic and geopolitical concerns. On top of this, the US Federal Reserve began to be perceived as increasingly restrictive and hawkish in its views on monetary policy. This was especially true when Fed chief Jerome Powell, immediately after the Fed's December meeting, talked about "autopilot" in terms of continued trimming of its bond portfolio – a reversal of previous quantitative easing. The market perceived this as the Fed's intention to tighten until they arrived at a situation in which markets and the economy would cool off. The financial markets interpreted this as a lack of unresponsiveness and flexibility on the Fed's part. This caused extra jitters and a feeling of pessimism at a time when the market was seeing so many concerns over geopolitics and the state of the global economy piling up. Incentives to realize tax deductible losses likely accentuated the decline in the United States.

In the last few decades, we have seen a number of nail-biting market plunges that will go down in history as dramatic and difficult. For instance,

- The stock market crash of 1987, where automated program trading and stop-loss trading took much of the blame.

- The Asian financial crisis of 1998, considered to have been exacerbated by debt burdens nominated in dollars in emerging markets.
- The collapse after the market bubble of 2000, made worse by auditing scandals.
- The Great Recession beginning in 2008, triggered by uncontrolled credit expansion in the United States and resulting in defaults in the financial sector.
- The stock market slump of 2015-16, which hit the pharmaceutical and biotechnology sector particularly hard because it coincided with US election campaigns which focused on high drug prices.
- The sharp fall in December 2018, which boiled down to a combination of too many geopolitical issues in combination with a rather hawkish Fed.

In addition to these major significant corrections, there were many more corrections that, when they occurred, gave rise to considerable uncertainty, anxiety and fear. The Greek crisis and the Debt Ceiling Crisis in the United States are two such examples in this decade.

In retrospect, we can say that we took an overly optimistic view of the market situation at the beginning of December. We saw a strong market ahead of us that would conclude an otherwise mediocre year, but with attractive valuations. However, a high net exposure in the fund at the outset of the month meant a higher drop than for the market and for the sector as a whole. A large exposure to biotechnology (40 percent) and services (20 percent), the subsectors that suffered the worst performance in the sector, intensified the decline. In addition, small and medium-sized enterprises in biotechnology (which the fund owns but which are not part of our reference global healthcare sector index) fell the most. They are less liquid and more dependent on healthy capital markets for their future financing needs, and generally possess greater volatility because of the close link between their valuations and the perception of the general economy and economic outlook. As a result of the fund's sharp decline, we have seriously considered lowering the net exposure in January.

We would like to emphasize that we maintain strong confidence in the sector and all subsectors, not least biotechnology. The valuations are, in our opinion, quite attractive in absolute terms as well as in historical comparisons. The sector continues to grow faster than the global economy. Furthermore, our assessment is that the level and pace of innovation are the highest that the sector has ever enjoyed. Taken together, these factors indicate that the fund is well positioned to once again achieve its stated return target of 12 percent per year. By the end of this year, the geopolitical uncertainties which dominated December 2018 should, at least taken together, look better. We look forward to 2019, which in our eyes brims with opportunities.

Fund characteristics

KIID AND PROSPECTUS (WEBPAGE)

<http://fundinfo.sebfundservices.lu/RhenmanPartnersFund/>

INVESTABLE CURRENCIES

Euro (EUR) / Swedish Krona (SEK) / US Dollar (USD)

TARGET FUND SIZE

EUR 1bn (hard close)

RETURN TARGET

Annualised net returns in excess of 12% over time

LEGAL STRUCTURE

AIF / FCP (Fonds Commun de Placement) under Part II of the Luxembourg Law on Investment Funds

PORTFOLIO MANAGER

Rhenman & Partners Asset Management AB

INVESTMENT TEAM

Henrik Rhenman & Susanna Urdmark

AIFM / MANAGEMENT COMPANY

FundRock Management Company S.A.

PRIME BROKER

Skandinaviska Enskilda Banken AB (publ)

DEPOSITARY AND PAYING AGENT

Skandinaviska Enskilda Banken S.A.

AUDITOR

PricewaterhouseCoopers (PwC)

SUBSCRIPTION/REDEMPTION

Monthly

MINIMUM TOP UP

No minimum

NOTICE PERIOD

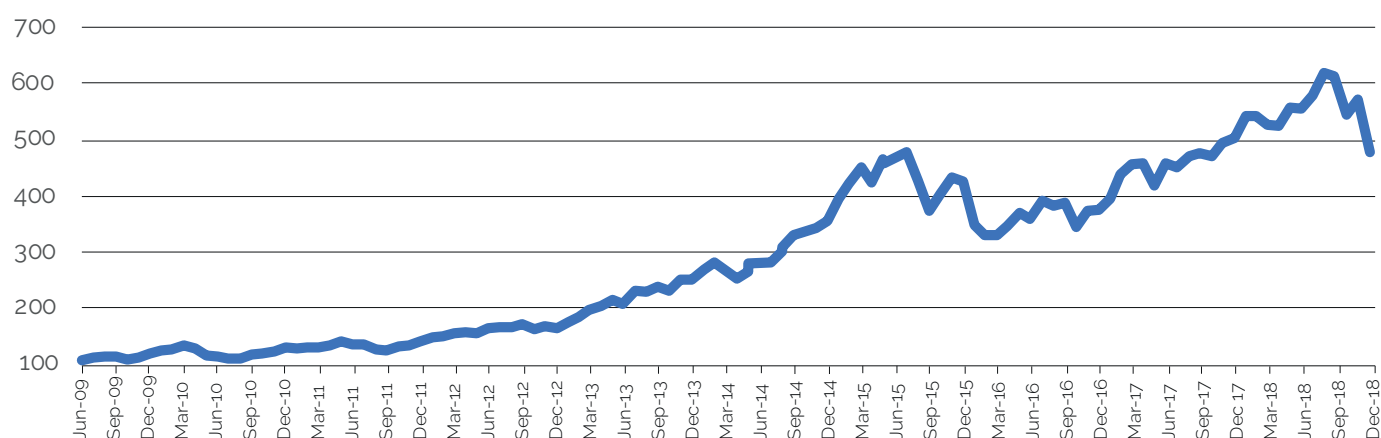
3 working days

HURDLE RATE

Euribor 90D (high-water mark)

+18%
annualised return since inception

FUND PERFORMANCE - IC1 (EUR)

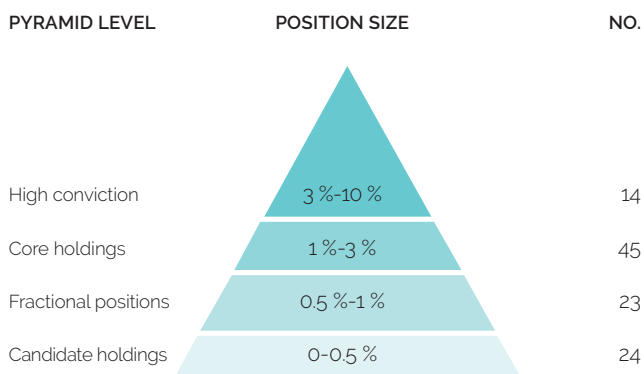


DECEMBER 2018

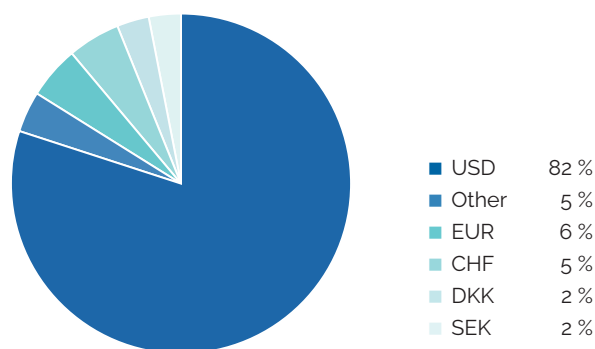
SHARE CLASS	NAV ¹	MONTHLY RETURN ¹	YTD 2018 ¹	SINCE INCEPTION ¹
IC1 (EUR)	475.31	-16.68%	-5.14%	375.31%
IC3 (EUR)	559.91	-16.68%	-2.69%	459.91%
IC2 (SEK)	347.14	-17.99%	-2.58%	247.14%
ID1 (SEK)	264.75	-18.03%	-8.52%	164.75%
IC1 (USD)	121.78	-15.89%	-9.08%	21.78%
IC2 (USD)	164.56	-15.86%	-8.64%	64.56%
RC1 (EUR)	415.26	-16.71%	-5.52%	315.26%
RC1 (SEK)	420.40	-18.06%	-3.55%	320.40%
RC2 (SEK)	438.95	-18.03%	-3.06%	338.95%
3 mos Euribor (EUR)	103.13	0.00%	-0.11%	3.13%

Note: 1) Please find launch date information on page 5-8.

PORTFOLIO CONSTRUCTION ²



CURRENCY EXPOSURE ³



RISK (IC1 EUR)

Value at risk ⁵	4.38%
Standard Deviation ⁶	20.76%
Sharpe Ratio ⁶	0.84

EXPOSURE ⁴

Long	165%
Short	22%
Gross	187%
Net	143%

AUM ⁷

Fund:
EUR 566m
USD 647m
Firm Total: EUR 573m

LARGEST LONG POSITIONS

1. United Health Group Inc
2. Cigna Corp Reg
3. Medtronic Plc Reg
4. Novartis AG Reg
5. Roche Holding Ltd Pref

SHARE CLASS CHARACTERISTICS – INSTITUTIONAL SHARE CLASSES – ONLY INSTITUTIONAL INVESTORS ⁸

MINIMUM INVESTMENT		MGT. FEE	PERF. FEE	ISIN NO.	BLOOMBERG TICKER	LIPPER REUTERS	TELEKURS
IC1 (EUR)	250 000	1.50 %	20 %	LU0417598108	RHLEIC1 LX	65147588	10034579
IC3 (EUR)	5 000 000	1.50 %	10 %	LU0434614789	RHHIC3 LX	68014068	10283697
IC2 (SEK)	50 000 000	1.00 %	20 %	LU0417598793	RHHIC2S LX	68204997	20323930
ID1 (SEK)	100 000	1.50 %	20 %	LU0417599098	RHHICD1 LX	68153820	18491109
IC1 (USD)	300 000	1.50 %	20 %	LU0417598280	RHUIC1A LX	68305812	26812813
IC2 (USD)	6 000 000	1.00 %	20 %	LU0417598520	RHUIC2U LX	68265724	24456000

SHARE CLASS CHARACTERISTICS – RETAIL SHARE CLASSES – ALSO OPEN TO INSTITUTIONAL INVESTORS ⁸

MINIMUM INVESTMENT		MGT. FEE	PERF. FEE	ISIN NO.	BLOOMBERG TICKER	LIPPER REUTERS	TELEKURS
RC1 (EUR)	2 500	2.00 %	20 %	LU0417597555	RHLERC1 LX	65147589	10034567
RC1 (SEK)	500	2.00 %	20 %	LU0417597712	RHLSRC1 LX	68014067	10239523
RC2 (SEK)	2 500 000	1.50 %	20 %	LU0417598017	RHLSRC2 LX	68015239	10239528

Notes: 2) As a percentage of the market value of the long and short positions (excluding cash positions). 3) Number of long equity positions (excluding any ETFs). 4) The exposure is adjusted for net fund flow at month end. 5) For holdings at month end (95 % conf. int. 250 days history). 6) Standard deviation and Sharpe ratio are annualized. 7) The AUM is adjusted for net fund flow at month end. 8) Administrative fees are charged in addition to the fees above. Further information is available in the KIID as well as the prospectus (part B. A14-18).

NAV & PERFORMANCE DATA

IC1 (EUR) NAV													
YEAR	JAN	FEB	MAR	APR	MAY	JUN	JUL	AUG	SEP	OCT	NOV	DEC	
2009						100.75	105.19	107.47	107.83	100.99	105.70	113.28	
2010	117.91	119.94	127.53	122.31	108.73	106.40	102.84	102.63	109.95	112.16	116.17	122.73	
2011	121.53	124.28	123.35	127.79	134.24	129.26	128.19	119.36	118.28	125.67	127.48	134.59	
2012	142.42	143.99	149.51	150.29	150.07	159.07	160.74	160.74	165.47	156.93	161.34	158.92	
2013	168.92	178.11	191.91	198.41	209.10	202.53	225.87	223.66	233.45	225.66	246.67	246.79	
2014	263.91	277.13	262.34	247.80	260.99	274.87	276.25	296.82	304.03	326.16	338.66	352.48	
2015	391.34	419.34	448.65	421.01	463.44	456.29	476.60	424.39	370.76	401.72	430.21	423.32	
2016	345.01	326.39	325.66	342.05	366.15	355.48	389.06	378.89	385.50	340.52	369.37	372.46	
2017	391.88	436.08	454.95	456.28	415.30	455.96	449.05	468.44	473.40	468.37	491.88	501.07	
2018	535.61	535.64	525.88	523.61	556.39	554.68	578.66	618.36	613.63	543.46	570.43	475.31	

IC1 (EUR) PERFORMANCE %. NET OF FEES													
YEAR	JAN	FEB	MAR	APR	MAY	JUN	JUL	AUG	SEP	OCT	NOV	DEC	TOTAL
2009						0.75	4.41	2.17	0.33	-6.34	4.66	7.17	13.28
2010	4.09	1.72	6.33	-4.09	-11.10	-2.14	-3.35	-0.20	7.13	2.01	3.58	5.65	8.34
2011	-0.98	2.26	-0.75	3.60	5.05	-3.71	-0.83	-6.89	-0.90	6.25	1.44	5.58	9.66
2012	5.82	1.10	3.83	0.52	-0.15	6.00	1.05	0.00	2.94	-5.16	2.81	-1.50	18.08
2013	6.29	5.44	7.75	3.39	5.39	-3.14	11.52	-0.98	4.38	-3.34	9.31	0.05	55.29
2014	6.94	5.01	-5.34	-5.54	5.32	5.32	0.50	7.45	2.43	7.28	3.83	4.08	42.83
2015	11.02	7.15	6.99	-6.16	10.08	-1.54	4.45	-10.95	-12.64	8.35	7.09	-1.60	20.10
2016	-18.50	-5.40	-0.22	5.03	7.05	-2.91	9.45	-2.61	1.74	-11.67	8.47	0.84	-12.01
2017	5.21	11.28	4.33	0.29	-8.98	9.79	-1.52	4.32	1.06	-1.06	5.02	1.87	34.53
2018	6.89	0.01	-1.82	-0.43	6.26	-0.31	4.32	6.86	-0.76	-11.44	4.96	-16.68	-5.14

IC2 (SEK) NAV													
YEAR	JAN	FEB	MAR	APR	MAY	JUN	JUL	AUG	SEP	OCT	NOV	DEC	
2013	105.95	109.53	117.11	123.34	131.02	128.83	142.56	142.09	147.55	144.39	159.03	158.77	
2014	169.27	178.14	170.53	162.83	172.56	182.30	184.56	197.44	201.10	218.77	227.47	240.91	
2015	264.32	283.76	300.86	285.57	313.96	305.90	326.08	292.97	252.07	273.89	288.10	281.94	
2016	232.96	221.76	219.09	228.93	248.02	243.80	270.79	263.91	270.85	245.87	263.97	260.88	
2017	270.49	305.07	315.32	318.79	294.29	318.16	310.91	322.70	331.45	331.49	352.83	356.33	
2018	379.63	389.78	388.65	395.52	411.90	415.07	427.79	469.65	455.95	404.87	423.30	347.14	

IC2 (SEK) PERFORMANCE %. NET OF FEES													
YEAR	JAN	FEB	MAR	APR	MAY	JUN	JUL	AUG	SEP	OCT	NOV	DEC	TOTAL
2013	5.95	3.38	6.92	5.32	6.23	-1.67	10.66	-0.33	3.84	-2.14	10.14	-0.16	58.77
2014	6.61	5.24	-4.27	-4.52	5.98	5.64	1.24	6.98	1.85	8.79	3.98	5.91	51.74
2015	9.72	7.35	6.03	-5.08	9.94	-2.57	6.60	-10.15	-13.96	8.66	5.19	-2.14	17.03
2016	-17.37	-4.81	-1.20	4.49	8.34	-1.70	11.07	-2.54	2.63	-9.22	7.36	-1.17	-7.47
2017	3.68	12.78	3.36	1.10	-7.69	8.11	-2.28	3.79	2.71	0.01	6.44	0.99	36.59
2018	6.54	2.67	-0.29	1.77	4.14	0.77	3.06	9.79	-2.92	-11.20	4.55	-17.99	-2.58

IC1 (USD) NAV													
YEAR	JAN	FEB	MAR	APR	MAY	JUN	JUL	AUG	SEP	OCT	NOV	DEC	
2015		106.43	109.37	107.12	114.84	114.48	118.78	107.70	93.74	100.50	102.88	104.09	
2016	84.51	80.27	84.02	88.68	92.24	89.25	98.50	95.48	98.04	84.48	88.63	88.85	
2017	95.78	104.78	110.08	112.50	105.65	116.97	118.72	124.26	125.01	121.84	130.74	133.94	
2018	147.42	145.05	143.28	140.20	145.38	144.95	151.45	161.13	159.77	138.04	144.79	121.78	

IC1 (USD) PERFORMANCE %. NET OF FEES													
YEAR	JAN	FEB	MAR	APR	MAY	JUN	JUL	AUG	SEP	OCT	NOV	DEC	TOTAL
2015		6.43	2.76	-2.06	7.21	-0.31	3.76	-9.33	-12.96	7.21	2.37	1.18	4.09
2016	-18.81	-5.02	4.67	5.55	4.01	-3.24	10.36	-3.07	2.68	-13.83	4.91	0.25	-14.64
2017	7.80	9.40	5.06	2.20	-6.09	10.71	1.50	4.67	0.60	-2.54	7.30	2.45	50.75
2018	10.06	-1.61	-1.22	-2.15	3.69	-0.30	4.48	6.39	-0.84	-13.60	4.89	-15.89	-9.08

NAV & PERFORMANCE DATA

IC2 (USD) NAV													
YEAR	JAN	FEB	MAR	APR	MAY	JUN	JUL	AUG	SEP	OCT	NOV	DEC	
2014					102.92	108.60	106.82	113.71	112.69	120.10	124.21	126.40	
2015	132.75	141.32	145.96	143.02	153.38	152.95	158.76	143.26	124.74	133.79	137.03	138.70	
2016	112.66	107.07	112.12	118.40	123.21	119.27	131.69	127.71	131.20	113.12	118.73	119.08	
2017	128.42	140.54	147.72	151.02	141.89	156.98	159.38	166.89	167.94	163.77	175.76	180.12	
2018	198.33	195.19	192.99	188.92	195.95	195.44	204.27	217.39	215.63	186.38	195.57	164.56	

IC2 (USD) PERFORMANCE %. NET OF FEES													
YEAR	JAN	FEB	MAR	APR	MAY	JUN	JUL	AUG	SEP	OCT	NOV	DEC	TOTAL
2014					2.92	5.52	-1.64	6.45	-0.90	6.58	3.42	1.76	26.40
2015	5.02	6.46	3.28	-2.01	7.24	-0.28	3.80	-9.76	-12.93	7.26	2.42	1.22	9.73
2016	-18.77	-4.96	4.72	5.60	4.06	-3.20	10.41	-3.02	2.73	-13.78	4.96	0.29	-14.15
2017	7.84	9.44	5.11	2.23	-6.05	10.63	1.53	4.71	0.63	-2.48	7.32	2.48	51.26
2018	10.11	-1.58	-1.13	-2.11	3.72	-0.26	4.52	6.42	-0.81	-13.56	4.93	-15.86	-8.64

IC3 (EUR) NAV													
YEAR	JAN	FEB	MAR	APR	MAY	JUN	JUL	AUG	SEP	OCT	NOV	DEC	
2009								102.15	103.33	96.78	101.30	109.19	
2010	114.20	116.43	124.73	119.62	106.33	104.06	100.57	100.37	107.52	109.68	113.59	120.00	
2011	118.82	121.50	120.59	124.92	131.89	126.43	125.36	116.73	115.66	122.76	124.53	132.03	
2012	140.67	142.42	148.58	149.43	149.16	159.24	161.09	161.06	166.38	157.79	162.21	159.79	
2013	170.25	180.70	196.39	203.85	216.23	208.50	235.66	233.03	244.50	236.34	260.09	260.40	
2014	280.76	296.58	279.47	263.97	278.02	294.48	296.09	321.00	329.83	356.89	372.31	389.50	
2015	437.99	471.80	508.68	477.10	527.32	518.14	544.00	481.68	420.82	455.95	488.29	480.47	
2016	391.59	370.46	369.62	388.23	415.58	403.47	441.58	430.05	437.55	386.50	419.24	422.75	
2017	444.79	494.96	516.44	518.14	471.42	517.72	509.84	533.67	539.99	534.17	563.68	575.38	
2018	620.04	620.31	607.45	604.83	647.20	644.96	676.32	728.69	722.85	640.18	671.96	559.91	

IC3 (EUR) PERFORMANCE %. NET OF FEES													
YEAR	JAN	FEB	MAR	APR	MAY	JUN	JUL	AUG	SEP	OCT	NOV	DEC	TOTAL
2009								2.15	1.16	-6.34	4.67	7.79	9.19
2010	4.59	1.95	7.13	-4.10	-11.11	-2.13	-3.35	-0.20	7.12	2.01	3.56	5.64	9.90
2011	-0.98	2.26	-0.75	3.59	5.58	-4.14	-0.85	-6.88	-0.92	6.14	1.44	6.02	10.03
2012	6.54	1.24	4.33	0.57	-0.18	6.76	1.16	-0.02	3.30	-5.16	2.80	-1.49	21.03
2013	6.55	6.14	8.68	3.80	6.07	-3.57	13.03	-1.12	4.92	-3.34	10.05	0.12	62.96
2014	7.82	5.63	-5.77	-5.55	5.32	5.92	0.55	8.41	2.75	8.20	4.32	4.62	49.58
2015	12.45	7.72	7.82	-6.21	10.53	-1.74	4.99	-11.46	-12.63	8.35	7.09	-1.60	23.36
2016	-18.50	-5.40	-0.23	5.03	7.04	-2.91	9.45	-2.61	1.74	-11.67	8.47	0.84	-12.01
2017	5.21	11.28	4.34	0.33	-9.02	9.82	-1.52	4.67	1.18	-1.08	5.52	2.08	36.10
2018	7.76	0.04	-2.07	-0.43	7.01	-0.35	4.86	7.74	-0.80	-11.44	4.96	-16.68	-2.69

ID1 (SEK) NAV													
YEAR	JAN	FEB	MAR	APR	MAY	JUN	JUL	AUG	SEP	OCT	NOV	DEC	
2012					100.64	104.51	101.00	100.77	105.42	101.93	105.47	103.07	
2013	109.66	109.21	116.69	122.83	130.33	127.88	141.46	140.87	146.24	143.04	157.52	157.19	
2014	167.54	168.39	161.54	154.18	163.36	172.51	174.59	186.71	190.10	206.73	214.90	227.49	
2015	249.52	256.41	271.30	257.41	282.93	275.68	293.76	263.61	226.72	246.24	258.91	253.27	
2016	209.19	186.39	184.08	192.27	208.21	204.58	227.14	221.28	227.01	205.99	221.08	218.41	
2017	226.36	247.58	257.17	259.92	239.81	259.22	253.21	262.73	269.78	269.72	287.00	289.42	
2018	308.23	298.96	297.90	303.06	315.52	317.84	327.46	359.38	348.18	309.03	322.97	264.75	

NAV & PERFORMANCE DATA

ID1 (SEK) PERFORMANCE %. NET OF FEES													
YEAR	JAN	FEB	MAR	APR	MAY	JUN	JUL	AUG	SEP	OCT	NOV	DEC	TOTAL
2012					0.64	3.85	-3.36	-0.23	4.61	-3.31	3.47	-2.28	3.07
2013	6.39	-0.41	6.85	5.26	6.11	-1.88	10.62	-0.42	3.81	-2.19	10.12	-0.21	52.51
2014	6.58	0.51	-4.07	-4.56	5.95	5.60	1.21	6.94	1.82	8.75	3.95	5.86	44.72
2015	9.68	2.76	5.81	-5.12	9.91	-2.56	6.56	-10.26	-13.99	8.61	5.15	-2.18	11.33
2016	-17.40	-10.90	-1.24	4.45	8.29	-1.74	11.03	-2.58	2.59	-9.26	7.33	-1.21	-13.76
2017	3.64	9.37	3.87	1.07	-7.74	8.09	-2.32	3.76	2.68	-0.02	6.41	0.84	32.51
2018	6.50	-3.01	-0.35	1.73	4.11	0.74	3.03	9.75	-3.12	-11.24	4.51	-18.03	-8.52

RC1 (EUR) NAV													
YEAR	JAN	FEB	MAR	APR	MAY	JUN	JUL	AUG	SEP	OCT	NOV	DEC	
2010									104.35	104.75	110.36	115.32	
2011	114.18	116.50	115.79	119.40	125.10	120.47	119.15	110.91	109.86	116.68	118.31	124.92	
2012	132.14	133.59	138.66	139.34	139.09	147.39	148.89	148.83	153.16	145.20	149.21	146.92	
2013	156.14	164.59	177.28	183.22	192.89	185.65	206.96	204.86	212.69	205.49	224.58	224.79	
2014	240.30	251.66	236.42	223.21	235.00	247.45	248.60	266.95	273.34	293.13	304.24	315.14	
2015	349.47	373.47	398.19	373.48	411.03	404.45	422.31	375.75	328.13	355.37	380.41	374.15	
2016	304.81	288.23	287.45	301.80	322.91	313.37	342.82	333.71	339.38	299.66	324.90	327.48	
2017	344.40	383.08	399.53	400.83	364.36	400.14	393.87	411.29	415.46	410.84	431.35	439.53	
2018	469.64	469.79	461.25	459.04	487.65	485.62	506.41	540.96	536.85	475.23	498.59	415.26	

RC1 (EUR) PERFORMANCE %. NET OF FEES													
YEAR	JAN	FEB	MAR	APR	MAY	JUN	JUL	AUG	SEP	OCT	NOV	DEC	TOTAL
2010									4.35	0.38	5.36	4.49	15.32
2011	-0.99	2.03	-0.61	3.12	4.77	-3.70	-1.10	-6.92	-0.95	6.21	1.40	5.59	8.32
2012	5.78	1.10	3.80	0.49	-0.18	5.97	1.02	-0.04	2.91	-5.20	2.76	-1.53	17.61
2013	6.28	5.41	7.71	3.35	5.28	-3.75	11.48	-1.01	3.82	-3.39	9.29	0.09	53.00
2014	6.90	4.73	-6.06	-5.59	5.28	5.30	0.46	7.38	2.39	7.24	3.80	3.58	40.19
2015	10.89	6.87	6.62	-6.21	10.05	-1.60	4.42	-11.03	-12.67	8.30	7.05	-1.65	18.73
2016	-18.53	-5.44	-0.27	4.99	6.99	-2.95	9.40	-2.66	1.70	-11.70	8.42	0.79	-12.47
2017	5.17	11.23	4.29	0.33	-9.10	9.82	-1.57	4.42	1.01	-1.11	4.99	1.90	34.22
2018	6.85	0.03	-1.82	-0.48	6.23	-0.42	4.28	6.82	-0.76	-11.48	4.92	-16.71	-5.52

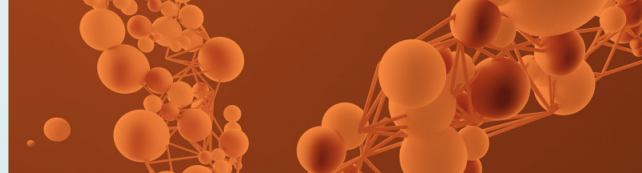
RC1 (SEK) NAV													
YEAR	JAN	FEB	MAR	APR	MAY	JUN	JUL	AUG	SEP	OCT	NOV	DEC	
2009						99.74	99.92	101.00	101.51	96.72	101.85	106.75	
2010	110.70	108.05	115.09	109.18	96.69	93.87	89.69	88.93	93.37	96.59	98.29	102.16	
2011	98.91	100.22	101.80	105.28	111.04	109.04	107.03	100.09	100.29	104.24	106.42	111.05	
2012	118.78	118.87	123.79	125.05	125.79	130.61	126.17	125.85	131.65	127.25	131.60	128.55	
2013	136.76	141.24	150.89	158.78	168.47	165.25	182.72	181.89	188.61	184.41	203.02	202.38	
2014	215.63	226.61	216.26	206.33	218.55	230.73	233.43	249.55	253.98	276.09	286.74	302.97	
2015	332.20	356.11	376.45	357.02	392.32	381.98	406.89	365.09	313.86	340.74	358.11	350.16	
2016	289.10	274.97	271.43	283.40	306.76	301.29	334.38	325.60	333.90	302.85	324.90	320.85	
2017	332.37	374.59	388.12	392.14	361.60	390.79	381.55	395.80	406.28	406.01	431.88	435.88	
2018	464.01	476.10	474.20	482.24	501.86	505.35	520.45	570.92	553.64	491.16	513.08	420.40	

RC1 (SEK) PERFORMANCE %. NET OF FEES													
YEAR	JAN	FEB	MAR	APR	MAY	JUN	JUL	AUG	SEP	OCT	NOV	DEC	TOTAL
2009						-0.26	0.18	1.08	0.50	-4.72	5.30	4.81	6.75
2010	3.70	-2.39	6.52	-5.14	-11.44	-2.92	-4.45	-0.85	4.99	3.45	1.76	3.94	-4.30
2011	-3.18	1.32	1.58	3.42	5.47	-1.80	-1.84	-6.48	0.20	3.94	2.09	4.35	8.70
2012	6.96	0.08	4.14	1.02	0.59	3.83	-3.40	-0.25	4.61	-3.34	3.42	-2.32	15.76
2013	6.39	3.28	6.83	5.23	6.10	-1.91	10.57	-0.45	3.69	-2.23	10.09	-0.32	57.43
2014	6.55	5.09	-4.57	-4.59	5.92	5.57	1.17	6.91	1.78	8.71	3.86	5.66	49.70
2015	9.65	7.20	5.71	-5.16	9.89	-2.64	6.52	-10.27	-14.03	8.56	5.10	-2.22	15.58
2016	-17.44	-4.89	-1.29	4.41	8.24	-1.78	10.98	-2.63	2.55	-9.30	7.28	-1.25	-8.37
2017	3.59	12.70	3.61	1.04	-7.79	8.07	-2.36	3.73	2.65	-0.07	6.37	0.93	35.85
2018	6.45	2.61	-0.40	1.70	4.07	0.70	2.99	9.70	-3.03	-11.29	4.46	-18.06	-3.55

NAV & PERFORMANCE DATA

RC2 (SEK) NAV													
YEAR	JAN	FEB	MAR	APR	MAY	JUN	JUL	AUG	SEP	OCT	NOV	DEC	
2009						99.74	99.98	101.12	101.68	96.94	102.10	107.07	
2010	111.07	108.57	115.69	109.78	97.28	94.47	90.31	89.58	94.10	97.38	99.14	103.08	
2011	99.84	101.20	102.84	106.40	112.28	110.30	108.32	101.33	101.58	105.64	107.89	112.63	
2012	120.30	120.44	125.51	126.83	127.66	132.58	128.13	127.86	133.77	129.36	133.84	130.80	
2013	139.17	143.74	153.48	161.57	171.53	167.92	185.74	185.04	192.06	187.86	206.87	206.39	
2014	219.98	231.28	221.05	210.98	223.54	236.05	238.90	255.47	260.24	283.00	293.97	310.92	
2015	341.02	365.80	386.77	366.96	403.34	392.85	418.61	375.87	323.26	351.09	369.14	361.10	
2016	298.25	283.80	280.26	292.73	317.00	311.48	345.83	336.89	345.62	313.62	336.59	332.52	
2017	344.62	388.54	402.06	406.34	374.90	405.23	395.81	410.70	421.71	421.61	448.59	452.80	
2018	482.21	495.26	493.58	502.12	522.72	526.43	542.35	595.22	577.33	512.40	535.48	438.95	

RC2 (SEK) PERFORMANCE %. NET OF FEES													
YEAR	JAN	FEB	MAR	APR	MAY	JUN	JUL	AUG	SEP	OCT	NOV	DEC	TOTAL
2009						-0.26	0.24	1.14	0.55	-4.66	5.32	4.87	7.07
2010	3.74	-2.25	6.56	-5.11	-11.39	-2.89	-4.40	-0.81	5.05	3.49	1.81	3.97	-3.73
2011	-3.14	1.36	1.62	3.46	5.53	-1.76	-1.80	-6.45	0.25	4.00	2.13	4.39	9.26
2012	6.81	0.12	4.21	1.05	0.65	3.85	-3.36	-0.21	4.62	-3.30	3.46	-2.27	16.13
2013	6.40	3.28	6.78	5.27	6.16	-2.10	10.61	-0.38	3.79	-2.19	10.12	-0.23	57.79
2014	6.58	5.14	-4.42	-4.56	5.95	5.60	1.21	6.94	1.87	8.75	3.88	5.77	50.65
2015	9.68	7.27	5.73	-5.12	9.91	-2.60	6.56	-10.21	-14.00	8.61	5.14	-2.18	16.14
2016	-17.41	-4.84	-1.25	4.45	8.29	-1.74	11.03	-2.59	2.59	-9.26	7.32	-1.21	-7.91
2017	3.64	12.74	3.48	1.06	-7.74	8.09	-2.32	3.76	2.68	-0.02	6.40	0.94	36.17
2018	6.50	2.71	-0.34	1.73	4.10	0.71	3.02	9.75	-3.01	-11.25	4.50	-18.03	-3.06



ABOUT RHENMAN & PARTNERS

Rhenman & Partners Asset Management, founded in 2008, is a Stockholm-based investment manager focusing on two niche funds administered by FundRock Management Company S.A.: Rhenman Healthcare Equity L/S, founded in 2009, and Rhenman Global Opportunities L/S, founded in 2016. Assets under management amount to approximately EUR 600m. Investment Teams of both Funds are in their investment processes supported by renowned Advisory Boards, including professors and experts with many years of market experience and extensive networks around the world.

Legal Disclaimer

Rhenman Healthcare Equity L/S. "The Fund" is not an investment fund as defined in the European Union directives relating to undertakings for collective investment in transferable securities (UCITS). Legal information regarding Fund is contained in the Prospectus and the KIID, available at Rhenman & Partners Asset Management AB (Rhenman & Partners) webpage: <http://rhepa.com/the-fund/prospectus/>.

This material has been prepared by Rhenman & Partners for professional and non-professional investors. Rhenman & Partners when preparing this information has not taken into account any one customer's particular investment objectives, financial resources or other relevant circumstances and the opinions and recommendations herein are not intended to represent recommendations of particular investments to particular customers. This material is for informational purposes only and should not be construed as an offer or solicitation to sell or buy units the Fund. Investors is strongly recommended to get professional advice as to whether investment in the Fund is appropriate having regard to their particular investment needs, objectives and financial circumstances, before investing.

All securities' transactions involve risks, which include (among others) the risk of adverse or unanticipated market, financial or political developments and, in international transactions, currency risk. There can be no assurance that an investment in the Fund will achieve profits or avoid incurring substantial losses. There is a high degree of risk inherent in investments and they may not be suitable for all eligible investors. It is possible that an investor may lose some or all of its investment. The past is not necessarily a guide to the future performance of an investment. The value of investments may fall as well as rise and investors may not get back the amount invested. Changes in rates of foreign exchange may cause the value of investments to go up or down.

Before making an investment decision, an investor and/or its adviser should (i) consider the suitability of investments in the Fund with respect to its investment objectives and personal situation and (ii) consider factors such as its personal net worth, income, age, risk tolerance and liquidity needs. Short-term investors and investors who cannot bear the loss of some or all of their investment or the risks associated with the limited liquidity of an investment should not invest.

Due care and attention has been used in the preparation of this information. However, actual results may vary from their forecasts, and any variation may be materially positive or negative. Forecasts, by their very nature, are subject to uncertainty and contingencies, many of which are outside the control of Rhenman & Partners. Rhenman & Partners cannot guarantee that the information contained herein is without fault or entirely accurate. There may be

delays, omissions or inaccuracies in the information. Any dated information is published as of its date only and no obligation or responsibility is undertaken to update or amend any such information.

The information in this material is based on sources that Rhenman & Partners believes to be reliable. Rhenman & Partners can however not guarantee that all information is correct. Furthermore, information and opinions may change without notice. Rhenman & Partners is under no obligation to make amendments or changes to this publication if errors are found or opinions or information change. Rhenman & Partners accepts no responsibility for the accuracy of its sources.

Rhenman & Partners is the owner of all works of authorship including, but not limited to, all design text, images and trademarks in this material unless otherwise explicitly stated. The use of Rhenman & Partners' material, works or trademarks is forbidden without written consent except where otherwise expressly stated. Furthermore, it is prohibited to publish material made or gathered by Rhenman & Partners without written consent.

By accessing and using the <http://rhepa.com/> website and any pages thereof, you acknowledge that you have reviewed the following important legal information and understand and agree to the terms and conditions set therein. If you do not agree to the terms and conditions in this disclaimer, do not access or use <http://rhepa.com/> website in any way.

Products and services described herein are not available to all persons in all geographical locations. Rhenman & Partner will not provide any such products or services to any person if the provision of such services could be in violation of law or regulation in such person's home country jurisdiction or any other related jurisdiction. The units of the Fund may not be offered or sold to or within the United States or in any other country where such offer or sale would conflict with applicable laws or regulations.

In no event, including (but not limited to) negligence, will Rhenman & Partner be liable to you or anyone else for any consequential, incidental, special or indirect damages (including but not limited to lost profits, trading losses and damages).

The sole legally binding basis for the purchase of shares of the Fund described in this information is the latest valid sales prospectus with its terms of contract. Subscriptions cannot be received on the basis of financial reports.

An investment in the Fund does not represent deposits or other liabilities of any member of the Rhenman & Partners Group. Neither Rhenman & Partners nor any member of the Rhenman & Partners Group and its affiliates guarantees in any way the performance of the Fund, repayment of capital from the Fund, any particular return from or any increase in the value of the Fund.

Subscribe to our monthly newsletter at **RHEPA.COM**

CONTACT DETAILS:

Rhenman & Partners
Asset Management AB
Strandvägen 5A
114 51 Stockholm, Sweden
Tel + 46 8 459 88 80
info@rhepa.com

SWEDISH INVESTORS:

Anders Grelsson
Swedish Investor Relations
Mob + 46 70 374 43 20
anders@rhepa.com

INTERNATIONAL INVESTORS (NON SWEDISH):

Carl Grevelius
Head of Investor Relations
Tel + 46 8 459 88 83
carl@rhepa.com

